

EventTracker: Virtual Appliance

Quick Start Guide

Version 7.4

About This Guide

Abstract

The EventTracker Virtual Appliance enables you to capture and manage log data from all types of sources in your enterprise. It installs within minutes and can begin deploying agents, collecting logs, and analyzing data from configured log sources immediately. This guide enables you to quickly set up the EventTracker Virtual Appliance in your VMware environment.

Scope

The configurations detailed in this guide are consistent with **EventTracker Version 7.4 Build 28** and **VMware ESX 3.5** or later.

Table of Contents

About This Guide	1
Minimum Hardware Requirements.....	3
EventTracker Virtual Appliance Details	3
Summary.....	4
Set Up EventTracker Virtual Appliance.....	5
Install EventTracker Virtual Appliance	5
Import EventTracker Virtual Appliance	5
Configure EventTracker Virtual Appliance	13

Minimum Hardware Requirements

Following are the minimum VM requirement to Import EventTracker virtual appliance on VMware ESX/Esxi.

- CPU – 2.5 GHz minimum
- Memory – 4 GB (6 GB Recommended)
- VM Controller – LSI Logic RAID
- VM Hard Drive – SCSI type
- Disk – 160 GB
- Network Adapter – 1

EventTracker Virtual Appliance Details

- EventTracker Enterprise OVF file size : 5.24 GB(5,495,345 KB)
- **Hostname** – ETConsole
- **WorkGroup** – EventTracker
- **Disk Space:** 160 GB (12.6 GB initial)
- **CPU** – 2.5 GHz minimum
- **Memory** – 4 GB
- **VM Hard Drive** – SCSI type
- **IP Address** – Assigned by DHCP.
- **Operating System** – Windows server 2008R2 SP1
- **Web Server** – IIS
- **Database Server** – Microsoft SQL Server 2008R2 Express Edition SP2
- **EventTracker Version** – 7.4 Build 28 Collection Point Edition.

Summary

1. Click the link below to download OVA [EventTrackerEnterprise_7_4_28_CP.ova](#)
2. Please get the EventTracker license from EventTracker support.
3. Import OVF to VMware ESX.
4. Install **VMware Guest** tools on newly imported VM.
5. Login as ETAdmin,
 - Change Computer name and if required join it to Domain and restart the Virtual machine.
 - Right click on **UpdateSystemName.bat** available in c:\ and click on **Run as Administrator**.
6. Update the credentials in EventTracker.
7. Change **start up** to **Automatic** for following EventTracker Services and start the service.
 - EventTracker Agent
 - EventTracker Alerter
 - EventTracker EventVault
 - EventTracker Indexer
 - EventTracker Receiver
 - EventTracker Remoting
 - EventTracker Reporter
 - EventTracker Scheduler
 - StatusTracker
 - TrapTracker Receiver
 - WcwService
8. Install EventTracker license using **EventTracker License Manager**.
9. Run Windows updates to install latest windows updates and security patches.
10. Install Latest EventTracker updates.
11. Start **EventTracker Evaluation**.

Note:-

- Microsoft Windows OS will continue to run 30 days without activation. If you want to continue after that you need to activate windows using valid license key.
- No antivirus software is installed by default. It is recommended to install antivirus software.

Set Up EventTracker Virtual Appliance

Install EventTracker Virtual Appliance

1. Ensure that you are using fully functional VMware ESX/ESXi 3.5 or later.
2. Get **EventTracker Enterprise Evaluation License** by requesting to EventTracker Support.
3. Download the [EventTrackerEnterprise_7_4_28_CP.ova](#).
4. Follow the instructions provided in detailed section (Import EventTracker Virtual appliance) to import the downloaded OVA file.

Import EventTracker Virtual Appliance

1. Connect to **VMware VCentre server** using **VI Client** using appropriate user credentials.

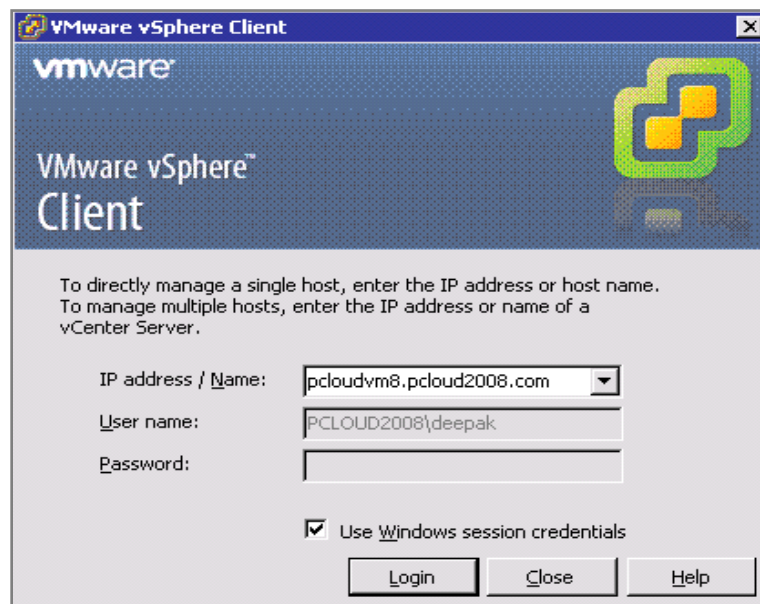


Figure 1

2. In the **vSphere Client**, click the **File** menu, and then select **Deploy OVF Template**.

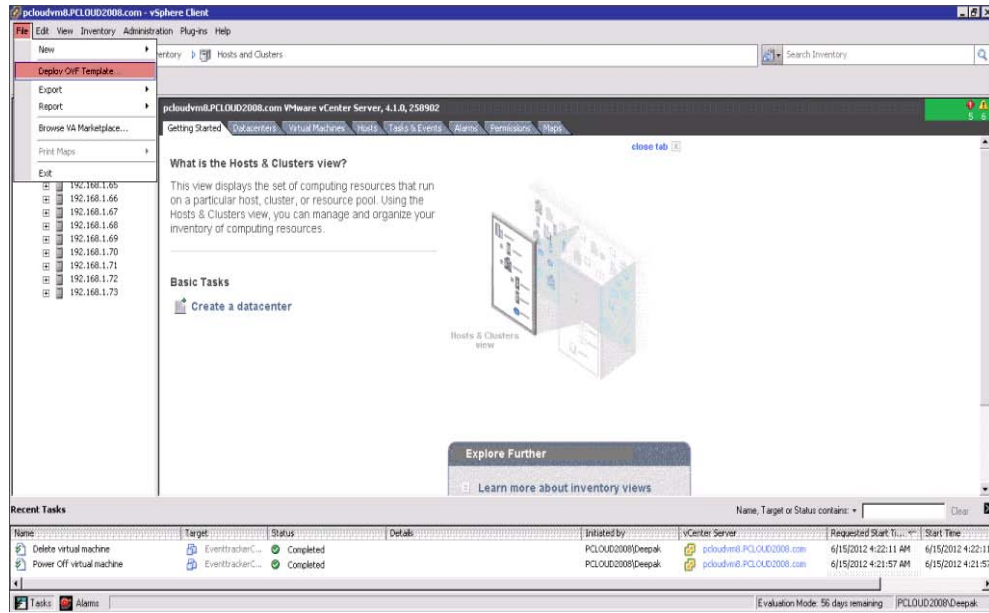


Figure 2

3. In the **Deploy OVF Template** wizard, browse and select the [EventTrackerEnterprise_7_4_28_CP.ova](#) file, and then click **Next >**.

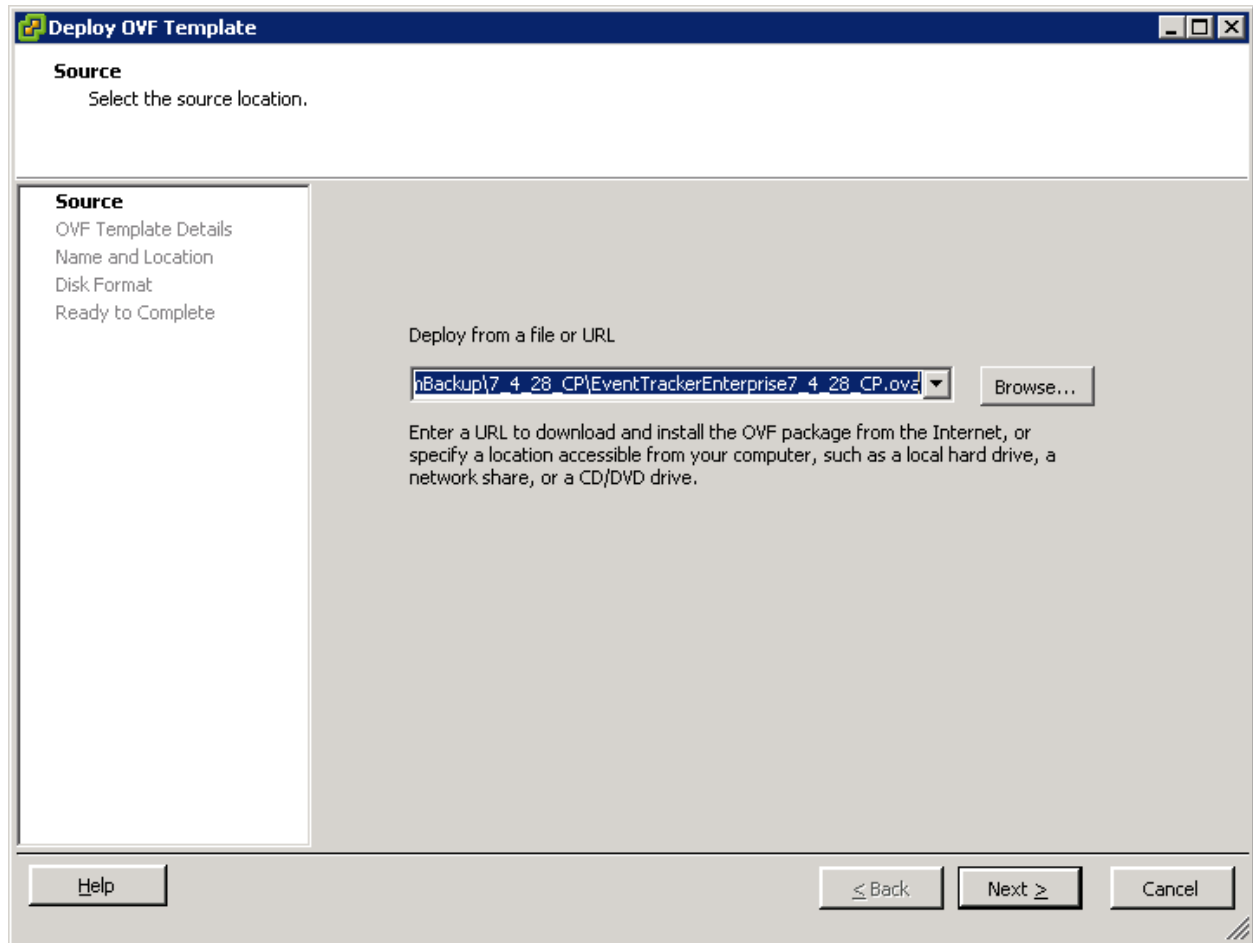


Figure 3

4. Verify the **OVF Template Details** page, and then click **Next >**.

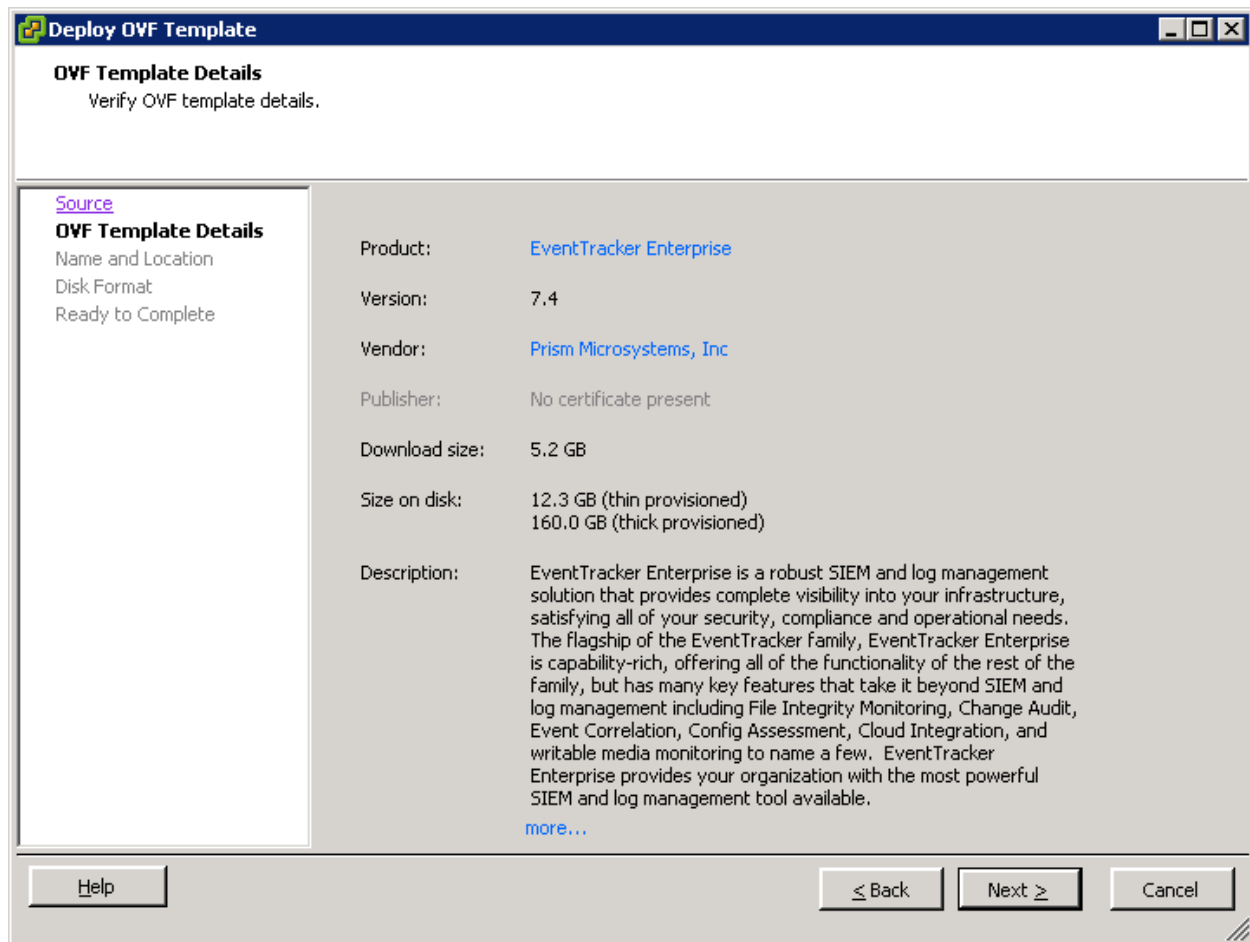


Figure 4

5. If required, edit the **VMName** and then select the Datacenter within the inventory where the **vApp** resides.
6. Click **Next ≥**.
7. Select the host or cluster on which you wish to deploy the OVF template, and then click **Next ≥**.

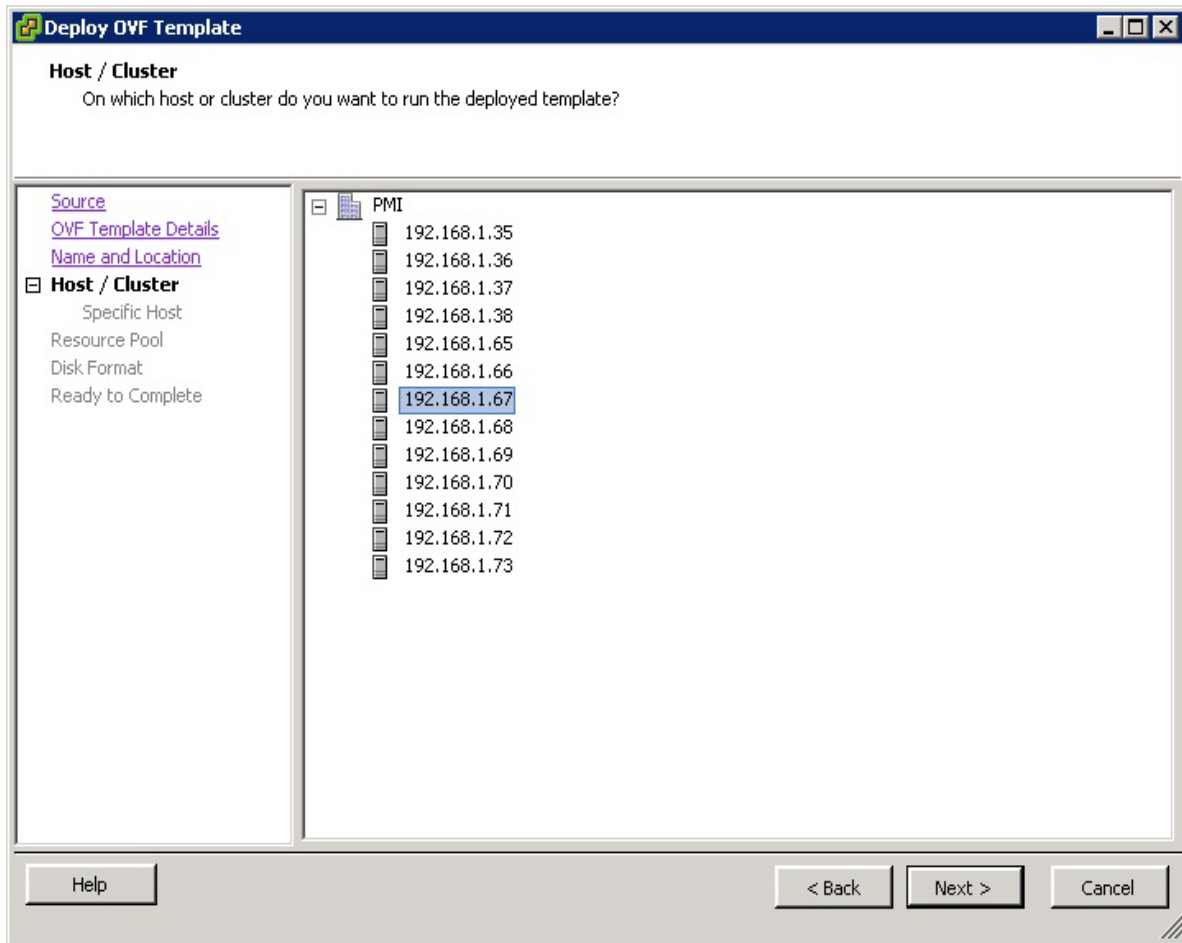


Figure 5

8. To store the virtual machine virtual disks, select the disk format as **Thin Provisioned format**, and click **Next**.

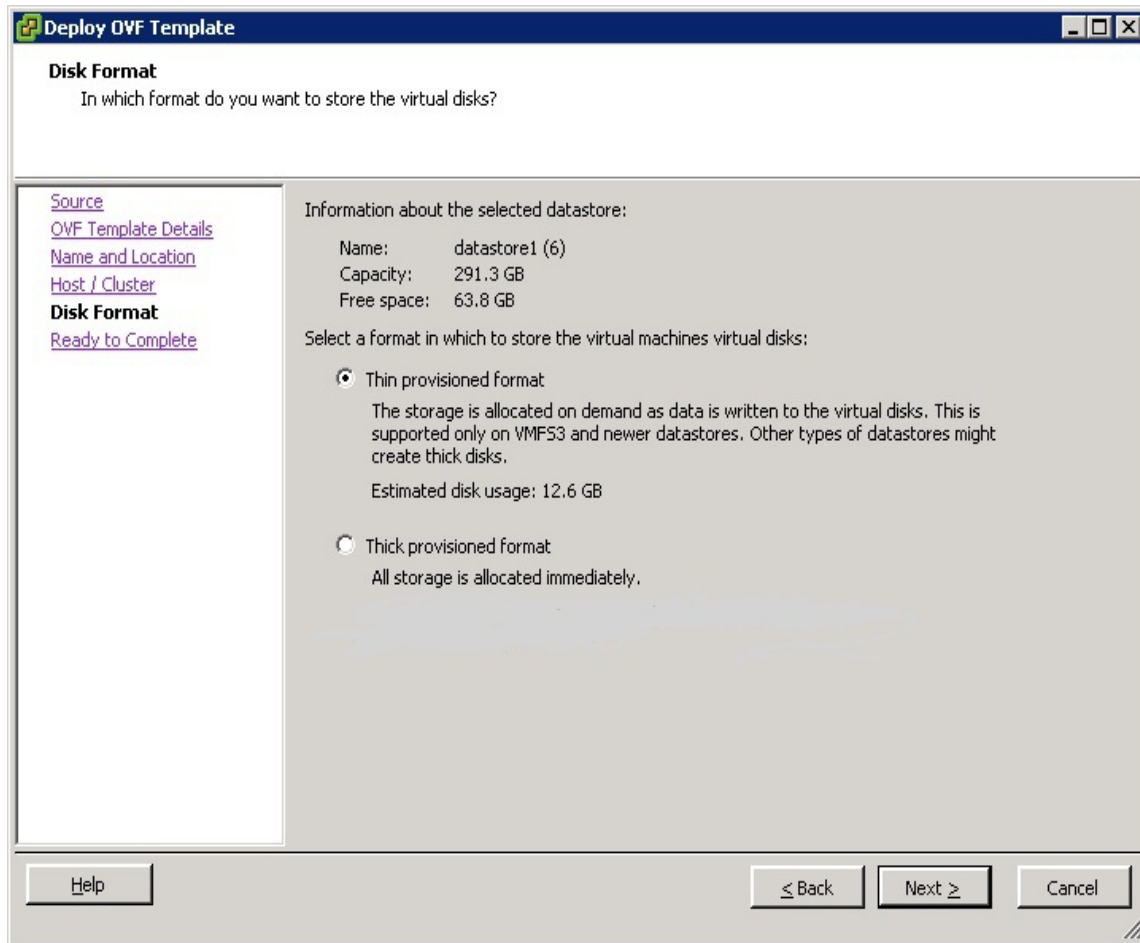


Figure 6

9. Review the deployment settings, and then click **Finish**.

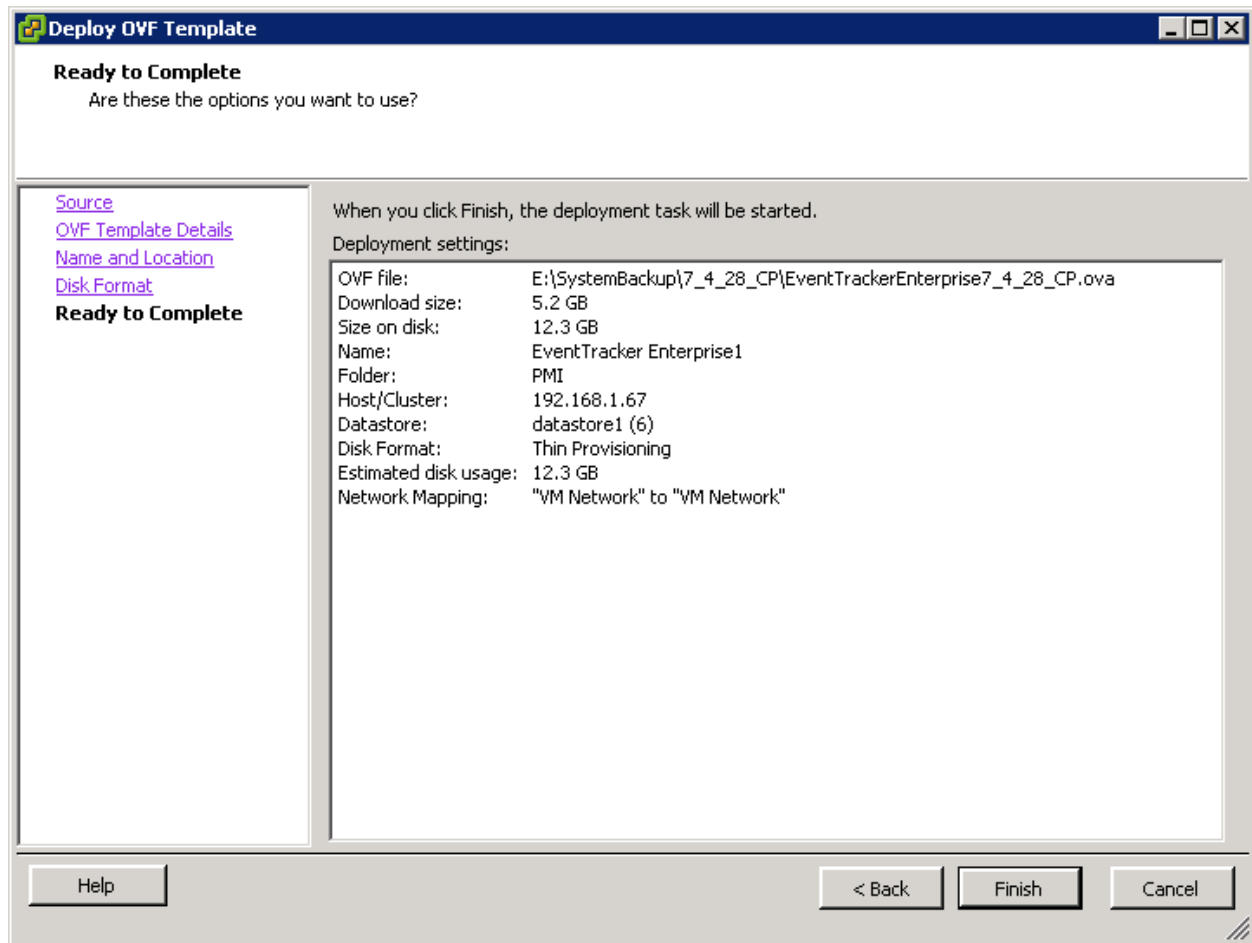


Figure 7

The progress bar of the import task appears on the screen.

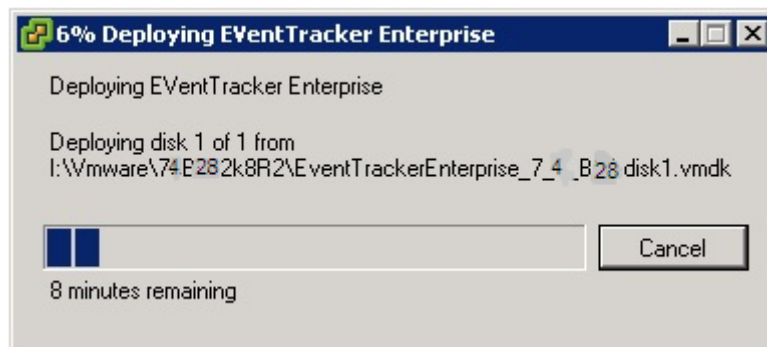


Figure 8

10. Click the **Close** button to complete the deployment process.

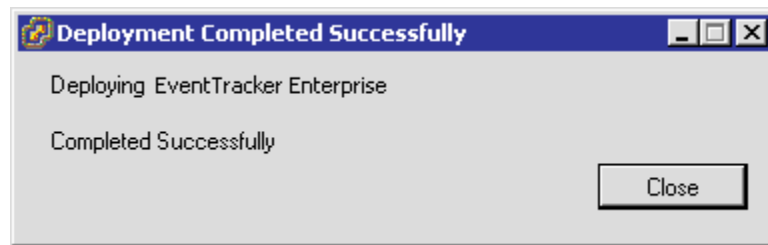


Figure 9

Configure EventTracker Virtual Appliance

Once EventTracker Enterprise Virtual appliance is deployed successfully, make few configuration changes as below:

1. Power on the EventTracker Virtual machine.
2. Log in to 'EventTracker Enterprise Virtual' system as EventTracker administrator using below credential.
 - **Username:** ETConsole\ETAdmin
 - **Password:** Welcome\$125

NOTE:

On first successful logon you will be prompted to change the ETAdmin user password. Change it to secure password and keep it safe.

3. Change Computer name and, if required join it to Domain and restart the Virtual machine.
4. Right click on **UpdateSystemName.bat** available in **c:** and click on **Run as Administrator**.
5. To update ETAdmin user credentials in EventTracker, click the **Start** button, select **Programs**, and then select **Prism Microsystems**.
6. Select **EventTracker**, and then select **EventTracker Configuration**.

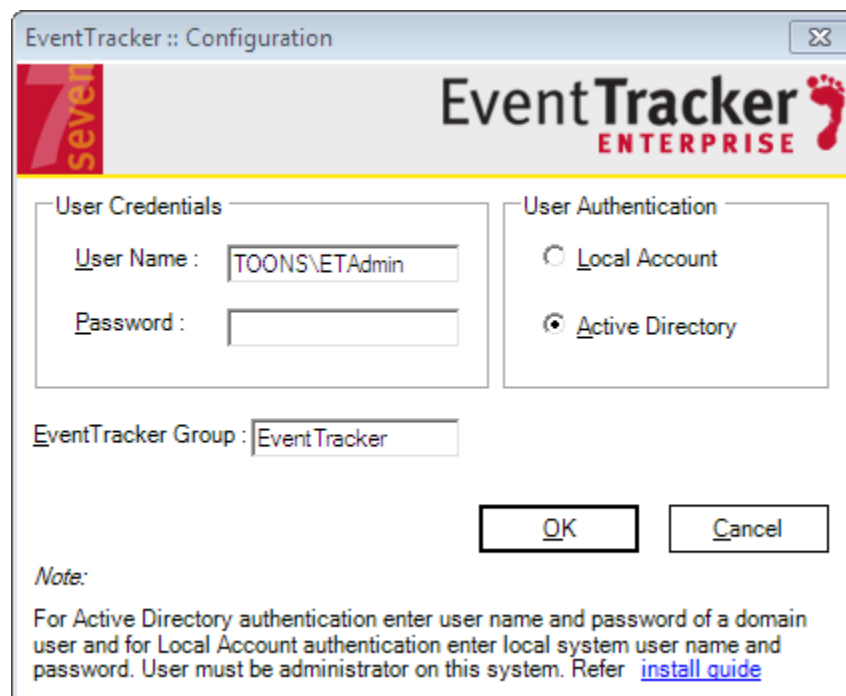


Figure 10

Update the user credential ETAdmin user or select active directory and enter domain user credential.

7. Once **EventTracker Configuration** validates the credential and runs successfully, install **VMware Tools** on newly imported Virtual machine.
8. Change **start up type** to **Automatic** for following **EventTracker Services** and **start** the service.
 - EventTracker Agent
 - EventTracker Alerter
 - EventTracker EventVault
 - EventTracker Indexer
 - EventTracker Receiver
 - EventTracker Remoting
 - EventTracker Reporter
 - EventTracker Scheduler
 - StatusTracker
 - TrapTracker Receiver
 - WcwService
9. Open License Manager from EventTracker Control Panel, and then click the Upgrade License button to upgrade the License.

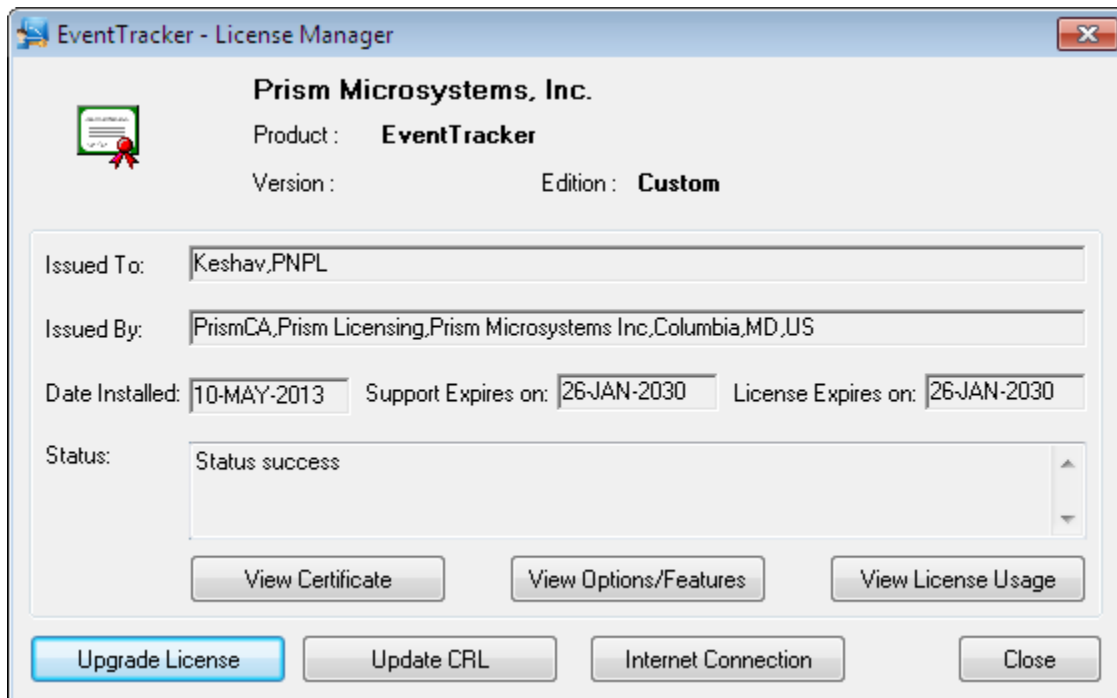


Figure 11

10. After successful license installation, login to **EventTracker Web** using [ETconsole\ETAdmin](#) user credentials in the web browser.

NOTE:

Log in to 'EventTracker Enterprise' Virtual machine as [ETConsole\administrator](#), and change the system password for the future reference. Secure the system using strong password.

General	
Product:	EventTracker Enterprise
Version:	7.4 (7.4.28)
Vendor:	Prism Microsystems, Inc
Guest OS:	Microsoft Windows Server 2008 R2 (64-bit)
VM Version:	4
CPJ:	4 vCPU
Memory:	4096 MB
Memory Overhead:	286.38 MB
VMware Tools:	Not running
IP Addresses	
DNS Name:	
EVC Mode:	N/A
State:	Powered Off
Host:	192.168.1.67
Active Tasks:	

Figure 12