

How-To Guide

Configuring Bitwarden Password Manager to Forward Logs to EventTracker

Publication Date:

December 21, 2021

Abstract

This guide provides instructions to retrieve the **Bitwarden Password Manager** events via Integrator. Once the logs start coming into EventTracker, the reports, alerts, and categories can be configured.

Scope

The configuration details in this guide are consistent with EventTracker version 9.3 or above and **Bitwarden Password Manager** (Classic 2019 Enterprise Organizations, Enterprise Organizations, and Teams Organizations On-Premises and in the Cloud).

Audience

Administrators who are assigned the task to monitor the **Bitwarden Password Manager** events using EventTracker.

Table of Contents

Table of Contents	3
1. Overview	4
2. Prerequisites.....	4
3. Configuring Bitwarden Password Manager to Forward Logs to EventTracker	4
3.1 Getting API details from Bitwarden PM console.....	4
3.2 Integrating Bitwarden Password Manager with EventTracker	5
About Netsurion	7
Contact Us.....	7

1. Overview

Bitwarden is a free and open-source password management service that stores sensitive information such as website credentials in an encrypted vault. Bitwarden offers a cloud-hosted service as well as the ability to deploy the solution on-premises.

EventTracker helps to monitor events from the Bitwarden Password Manager. Its dashboard and reports will help you to monitor cipher and user events that occur within the organization.

2. Prerequisites

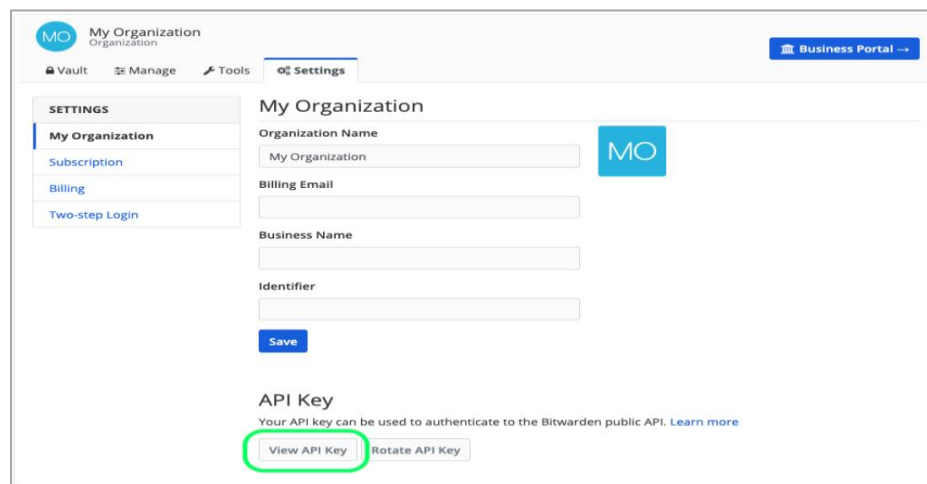
- **EventTracker v9.3 or above** should be installed.
- A user with administrator access for the Bitwarden Password Manager.
- Port should be allowed in the firewall.

3. Configuring Bitwarden Password Manager to Forward Logs to EventTracker

The Bitwarden Password Manager is combined with EventTracker by the Integrator based on the API Integration to forward logs to the EventTracker.

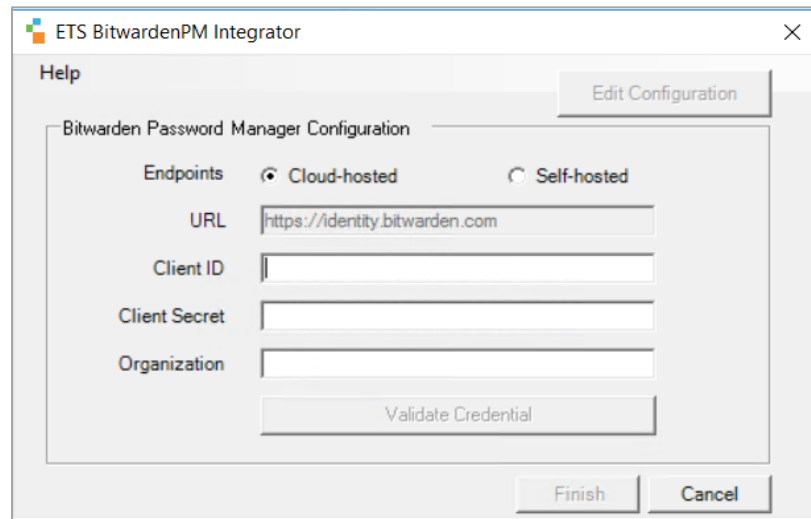
3.1 Getting API details from Bitwarden PM console

1. Login to the Bitwarden PM console.
2. Go to the **Settings** tab > **My Organization**.
3. Click the **View API Key** and copy the below details
 - client_ID
 - client_secret

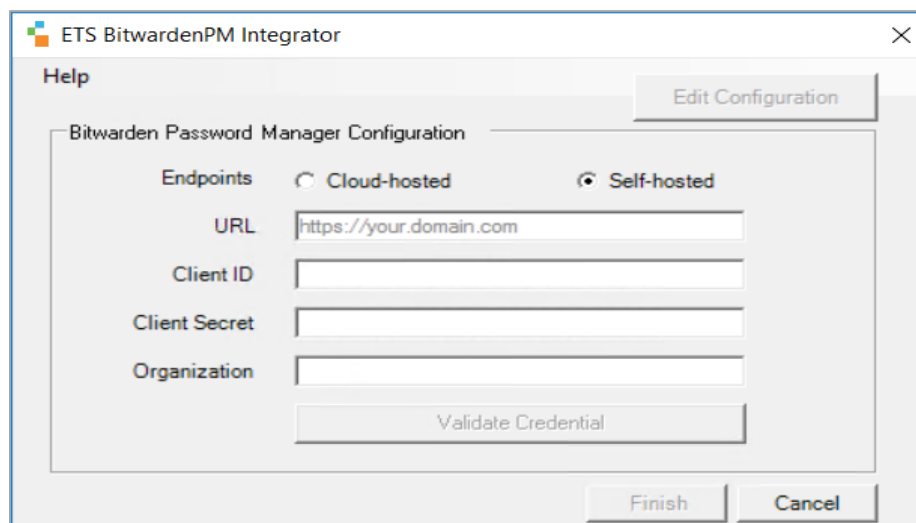


3.2 Integrating Bitwarden Password Manager with EventTracker

1. Download the Bitwarden Password Manager integrator package on the EventTracker Agent machine from the following link:
<https://www.netsurion.com/knowledge-packs/bitwarden-password-manager>
2. Run the downloaded **ETS_BitwardenPM_Integrator.exe** file.
The **ETS Bitwarden Integration** window opens.
3. To check the Integrator version, go to **Help > About**. Make sure you are using the latest version of the Integrator.

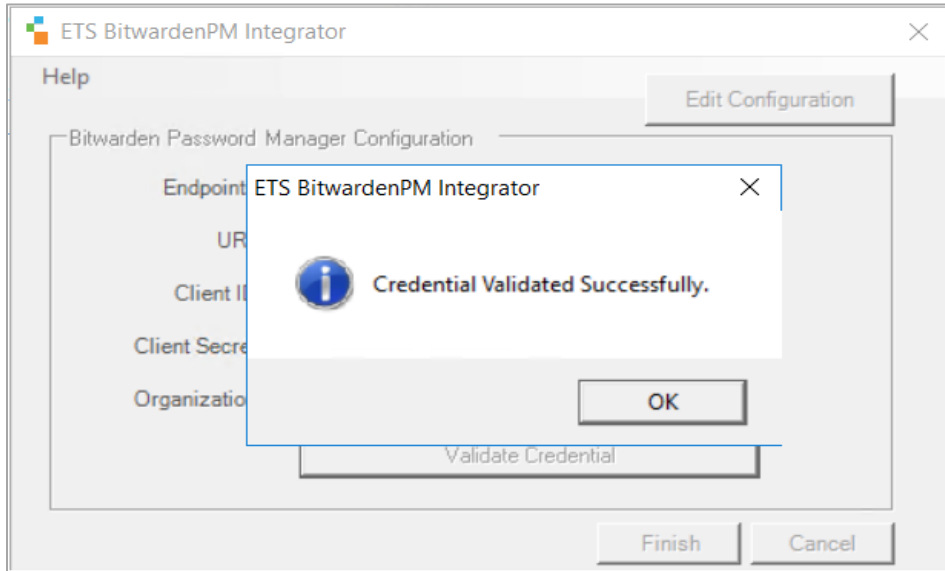


4. Select the hosted service type:
 - Cloud-hosted (**Default** selected)
 - Self-hosted (on-premises)
5. For the Self-hosted type, enter the Bitwarden PM URL (`https://your.domain.com`).

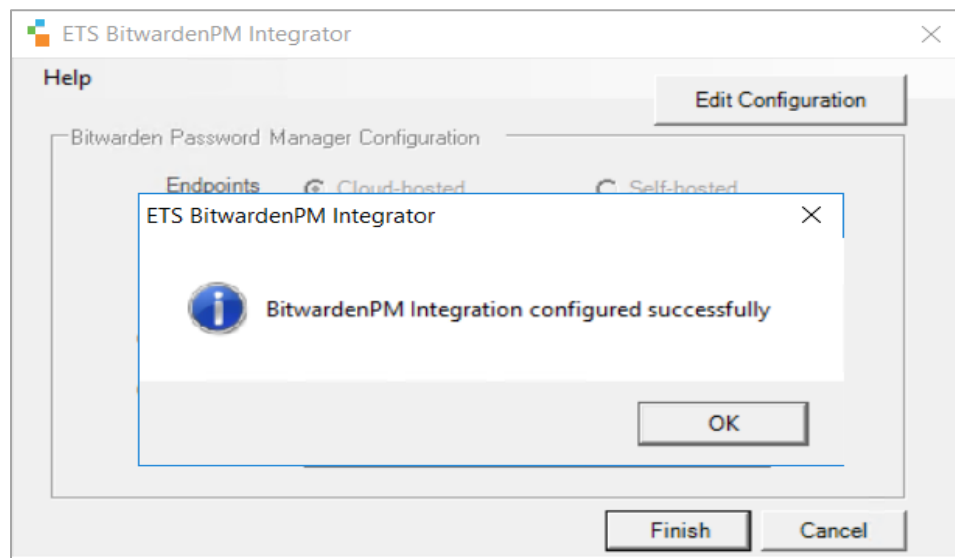


6. Provide the **Client ID**, **Client Secret** saved from the Bitwarden PM console.

7. Provide the **Organization** name displayed under the EventTracker Manager.
8. Click the **Validate Credential**.
A message window will pop up stating **Credentials Validated Successfully**.
9. Click **OK**.



10. Click **Finish** to complete the integration.



About Netsurion

Flexibility and security within the IT environment are two of the most important factors driving business today. Netsurion's cybersecurity platforms enable companies to deliver on both. Netsurion's approach of combining purpose-built technology and an ISO-certified security operations center gives customers the ultimate flexibility to adapt and grow, all while maintaining a secure environment.

Netsurion's [EventTracker](#) cyber threat protection platform provides SIEM, endpoint protection, vulnerability scanning, intrusion detection and more; all delivered as a managed or co-managed service.

Netsurion's [BranchSDO](#) delivers purpose-built technology with optional levels of managed services to multi-location businesses that optimize network security, agility, resilience, and compliance for branch locations. Whether you need technology with a guiding hand or a complete outsourcing solution, Netsurion has the model to help drive your business forward. To learn more visit [netsurion.com](https://www.netsurion.com) or follow us on [Twitter](#) or [LinkedIn](#). Netsurion is #23 among [MSSP Alert's 2021 Top 250 MSSPs](#).

Contact Us

Corporate Headquarters

Netsurion
Trade Centre South
100 W. Cypress Creek Rd
Suite 530
Fort Lauderdale, FL 33309

Contact Numbers

EventTracker Enterprise SOC: 877-333-1433 (Option 2)
EventTracker Enterprise for MSP's SOC: 877-333-1433 (Option 3)
EventTracker Essentials SOC: 877-333-1433 (Option 4)
EventTracker Software Support: 877-333-1433 (Option 5)
<https://www.netsurion.com/eventtracker-support>