

## 60E Firewall Installation Instructions

Please review the diagram on the next page. This is our typical installation which fits most organizations. If your particular environment requires a different setup, please make sure you can easily locate the referenced devices.

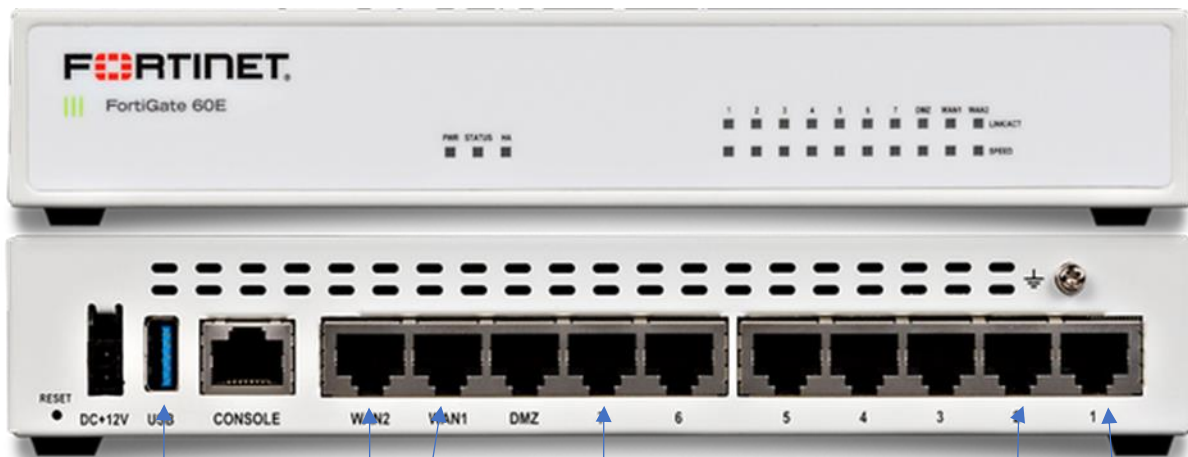
If your site uses PPPoE or a static IP and you have not given that information to Netsurion, please make sure to have it ready and let the Netsurion support engineer know before proceeding with the install. If you do not understand the above terms, that's ok! Simply reach out to us at (800) 559-8157 for support.

Your firewall, when received, should be stored in a secure, room-temperature location such as your back office. Do not store your firewall in high-temperature areas.

Thank you from,

Netsurion Support Team

techsupport@netsurion.com



Failover/Failback Options: USB modem connection for a phone line to a fax machine or secondary line OR WAN2 as secondary broadband connection

Connect all devices to ports 2 - 7. This would include PC's, Terminals, Servers, DVR's, etc. These devices should be moved from your current router/firewall to these ports. You may use a switch to add port density by plugging it into one of these ports.

Connect your Point of Sale (POS) system to port 1 on the firewall.

Connect an Ethernet cable from this port to your current router/firewall.