

# Enhancement in Network monitoring to monitor listening ports

---

*EventTracker Enterprise*

**Update:** ET82U16-036/ET82UA16-036

**Abstract:** This update will provide an Enhancement in Network Monitoring to monitor listening ports.

### **Who should read this document?**

Customers who use v 8.2 Build 14.

### **Why to apply the Update ?**

To monitor the process whose ports are in listen state.

**\*\*IMPORTANT:** Only the newly launched process will be monitored.

*The information contained in this document represents the current view of Prism Microsystems Inc. on the issues discussed as of the date of publication. Because Prism Microsystems must respond to changing market conditions, it should not be interpreted to be a commitment on the part of Prism Microsystems, and Prism Microsystems cannot guarantee the accuracy of any information presented after the date of publication.*

*This document is for informational purposes only. Prism Microsystems MAKES NO WARRANTIES, EXPRESS OR IMPLIED, AS TO THE INFORMATION IN THIS DOCUMENT.*

*Complying with all applicable copyright laws is the responsibility of the user. Without limiting the rights under copyright, this paper may be freely distributed without permission from Prism, as long as its content is unaltered, nothing is added to the content and credit to Prism is provided.*

*Prism Microsystems may have patents, patent applications, trademarks, copyrights, or other intellectual property rights covering subject matter in this document. Except as expressly provided in any written license agreement from Prism Microsystems, the furnishing of this document does not give you any license to these patents, trademarks, copyrights, or other intellectual property.*

*The example companies, organizations, products, people and events depicted herein are fictitious. No association with any real company, organization, product, person or event is intended or should be inferred.*

*© 2016 Prism Microsystems Corporation. All rights reserved. The names of actual companies and products mentioned herein may be the trademarks of their respective owners.*

# Table of Contents

Process to be followed after applying the Update: ET82U16-036 .....	3
Generated Event ID.....	5

# Process to be followed after applying the Update

- Open **EventTracker Control Panel**.
- Double click **EventTracker Agent Configuration**.
- Click the **Network Connection** tab.

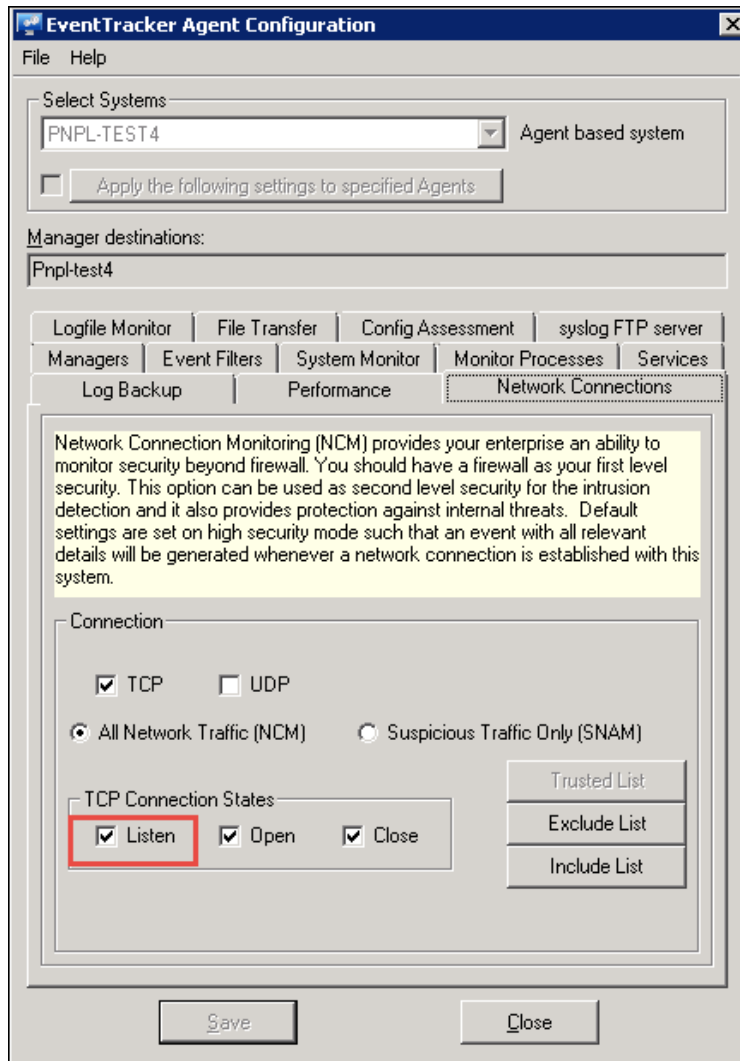


Figure 1

- In the **TCP Connection States** pane, a new option **Listen** is added which will be disabled by default.
- The user needs to click the **Listen** checkbox, to avail the option.
- To Exclude Network connection, click the **Exclude List** button and then click **New**.

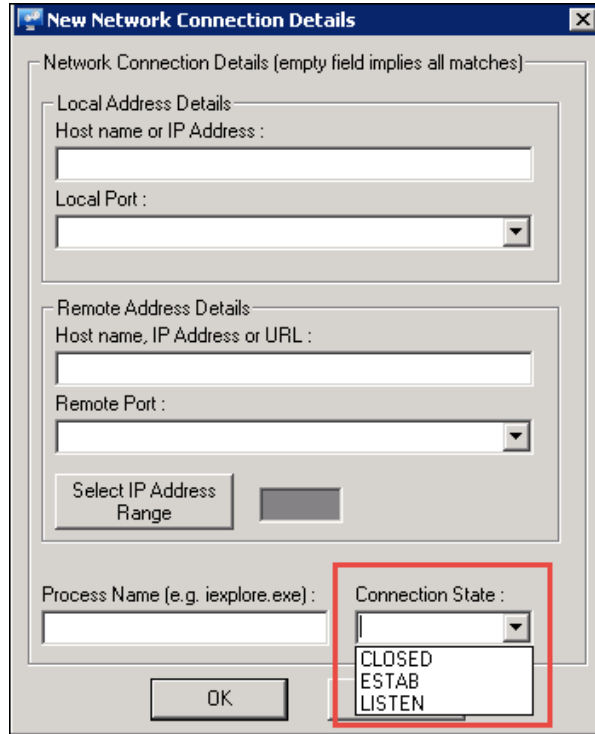


Figure 2

- In the **Connection State**, the new option **Listen** is displayed in the dropdown list.
- Enter appropriate data in relevant fields.
- Click **OK**.

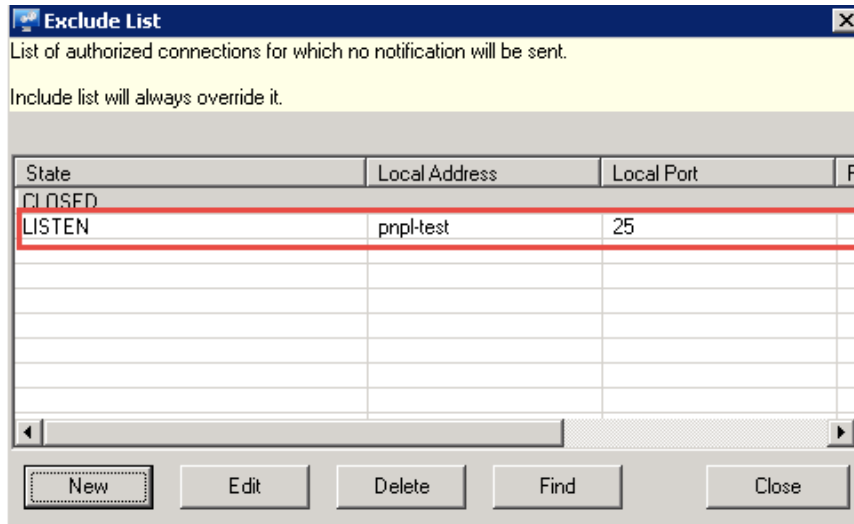


Figure 3

- The same option (Listen) is also available in the **Include List**, if the user wants to include Network connection.

**NOTE:** The **Listen** option will also be available in the **EventTracker web (Admin->Windows Agent configuration)** for Read-Only view.

## Generated Event ID

The newly generated event id will contain the detail of the process as shown below:

**Event ID: 3521**

**Description:**

A new TCP port opened for listening.

Type: TCP

IP Version: 4

Local Address: 0.0.0.0

Local Hostname: PNPL-TEST4

Local Port: 14505

User: NT AUTHORITY\SYSTEM

Process ID: 91436

Process Name: EtReceiver-W-14505.exe

Image File Name: C:\Program Files (x86)\Prism Microsystems\EventTracker\EtReceiver-W-14505.exe

Session ID: 0

Hash (MD5): 6b7ffe3cf3dd357bc12d0c52d8f44a1f

It will be sent as **Trap** event to the reporting manager.