



EventTracker

IIS Web Server Configuration Guide – EventTracker v9.x

Publication Date: December 11, 2017

Abstract

The purpose of this document is to help users install or customize web server (IIS) on Win 2k16, 2K12, Win 2K12 R2, Win 2K8, Win 2K8 R2, Vista and Win 7, with role services required for the proper functionality of EventTracker. These are essential services that should be up and running prior to installing EventTracker.

The information contained in this document represents the current view of Netsurion. on the issues discussed as of the date of publication. Because Netsurion must respond to changing market conditions, it should not be interpreted to be a commitment on the part of Netsurion, and Netsurion cannot guarantee the accuracy of any information presented after the date of publication.

This document is for informational purposes only. Netsurion MAKES NO WARRANTIES, EXPRESS OR IMPLIED, AS TO THE INFORMATION IN THIS DOCUMENT.

Complying with all applicable copyright laws is the responsibility of the user. Without limiting the rights under copyright, this paper may be freely distributed without permission from Netsurion, if its content is unaltered, nothing is added to the content and credit to Netsurion is provided.

Netsurion may have patents, patent applications, trademarks, copyrights, or other intellectual property rights covering subject matter in this document. Except as expressly provided in any written license agreement from Netsurion, the furnishing of this document does not give you any license to these patents, trademarks, copyrights, or other intellectual property.

The example companies, organizations, products, people and events depicted herein are fictitious. No association with any real company, organization, product, person or event is intended or should be inferred.

© 2017 Netsurion. All rights reserved. The names of actual companies and products mentioned herein may be the trademarks of their respective owners.

Table of Contents


Abstract	1
.NET Framework Pre-requisite for EventTracker versions	3
Windows Server 2016	3
Install and Customize Web Server (IIS)	3
Win 2K12 and Win 2K12 R2 Server	11
Install and customize Web Server (IIS)	11
Windows 2K8 and 2K8 R2 Server	25
Install Web Server (IIS)	25
Customize Web Server (IIS)	36
Install .NET 3.5 SP1	37
Windows 7 and Vista	41
Install and customize Web Server (IIS)	41
IIS Settings in Windows 2008 / 2008 R2 / 2012 / 2012 R2	45

.NET Framework Pre-requisite for EventTracker versions

Windows Server 2016

Install and Customize Web Server (IIS)

This section helps to install web server (IIS) with role services required for EventTracker.

1. Log on to **Windows 2016** server.
2. Click **Server Manager**  icon available in the task bar.
3. Select **Add Roles and Features**.

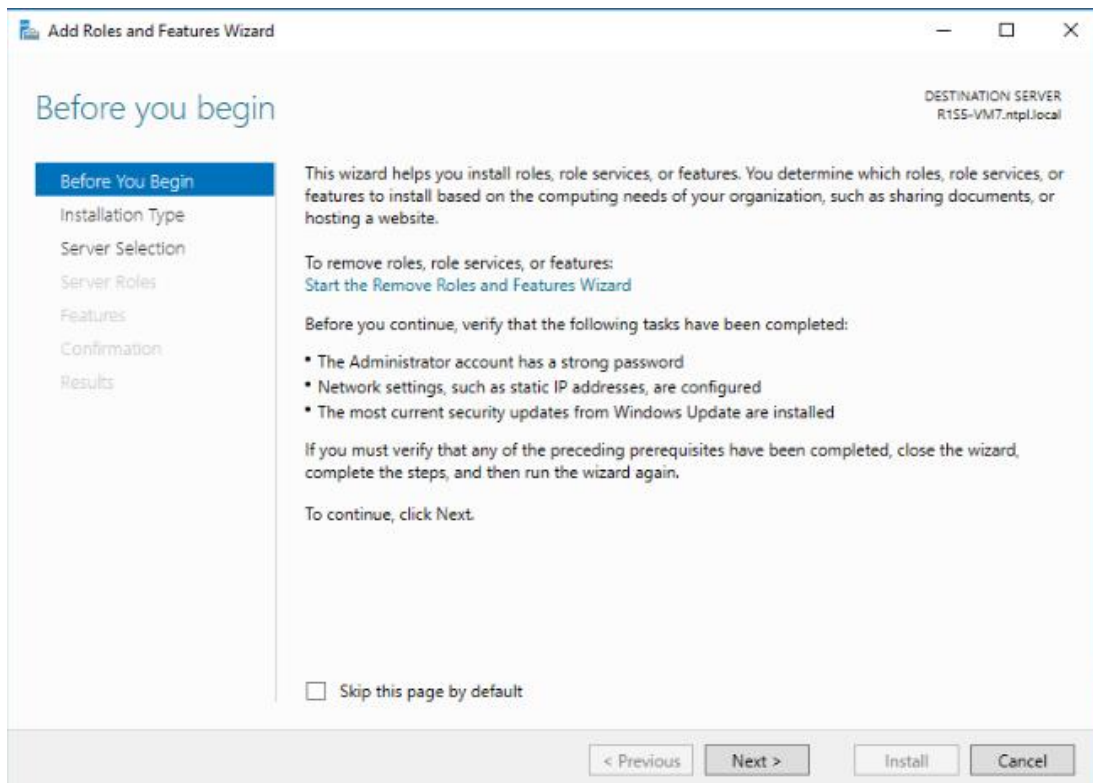


Figure 1

4. Click **Next >**

Select Installation Type window displays.

'Role based or feature based selection' option is selected by default. You can select the installation type as per the requirement.

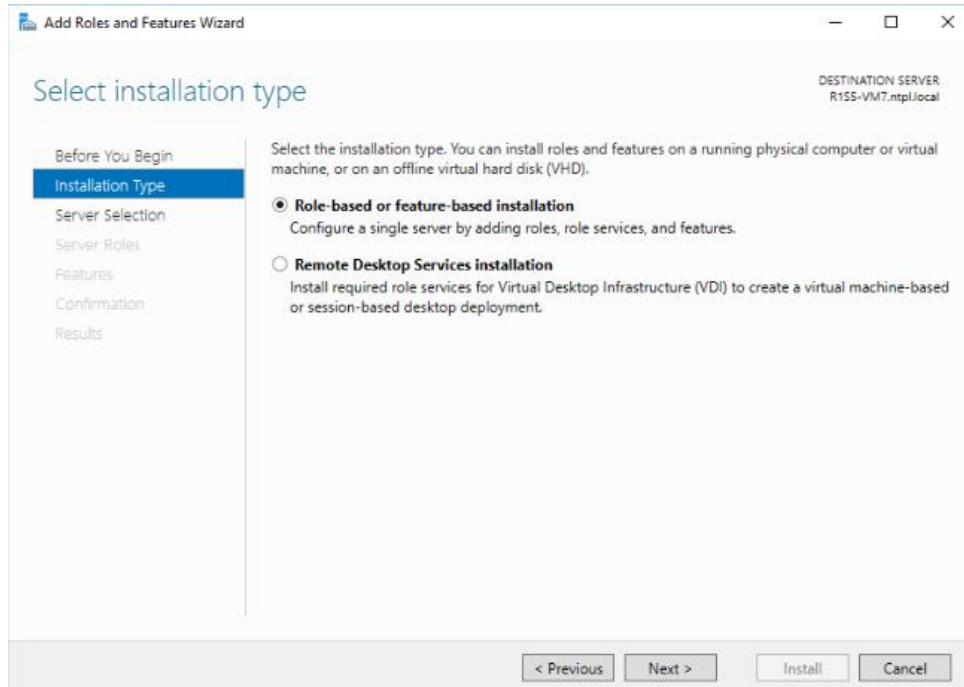


Figure 2

5. Click **Next >**
6. Select Local Server from the server pool, and then select **Next>**.

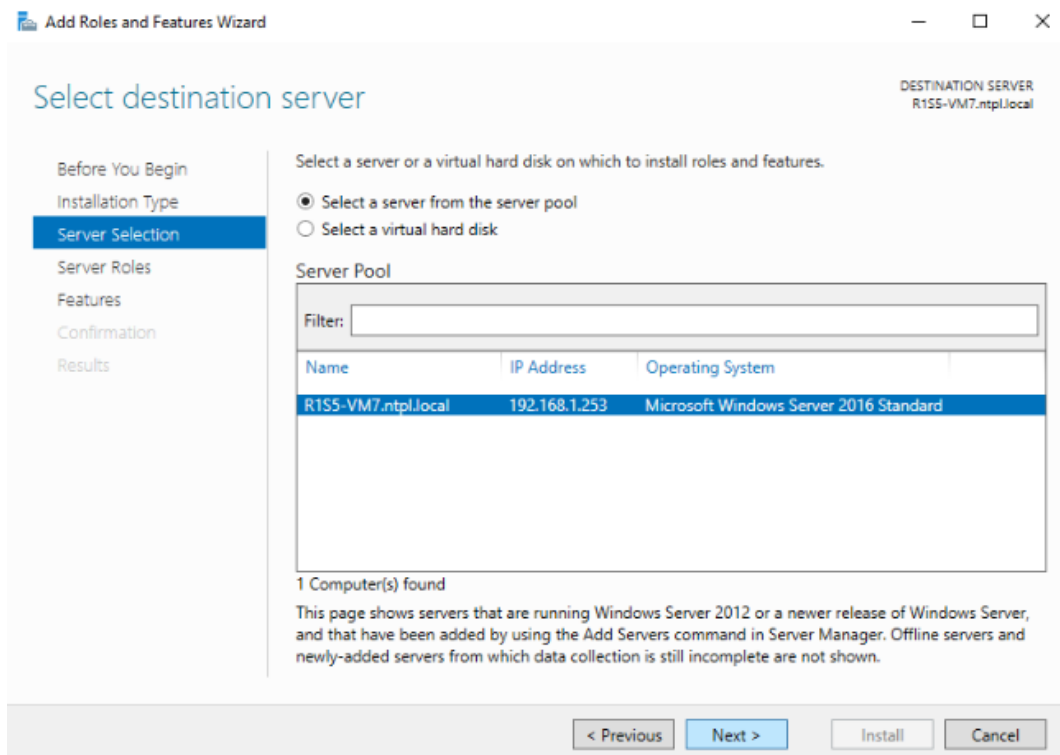


Figure 3

7. In **Roles** pane, select the **Application Server**, and then select **Web Server (IIS)**.

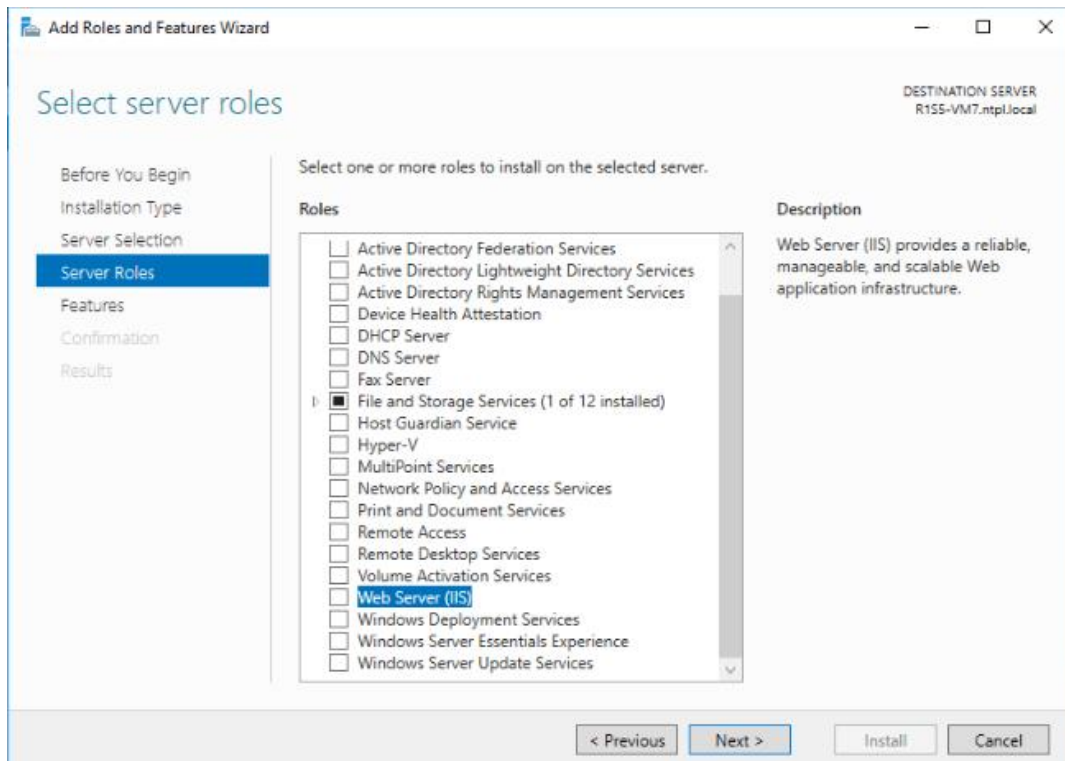


Figure 4

Add Roles and Features Wizard displays the confirmation message.

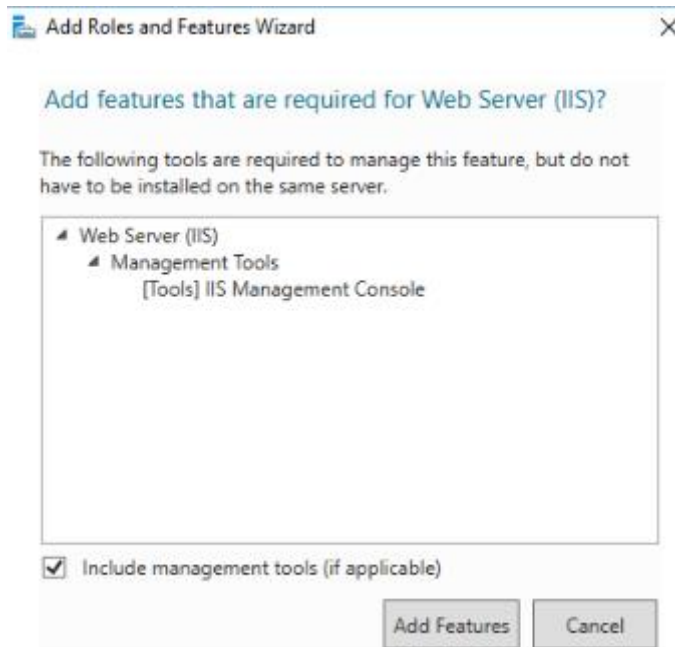


Figure 5

8. Click **Add Features**.
9. Click **Next >**
10. Select **.NET Framework 3.5 Features**, and then select **.NET Framework 3.5 (includes .NET 2.0 and 3.0)** option.

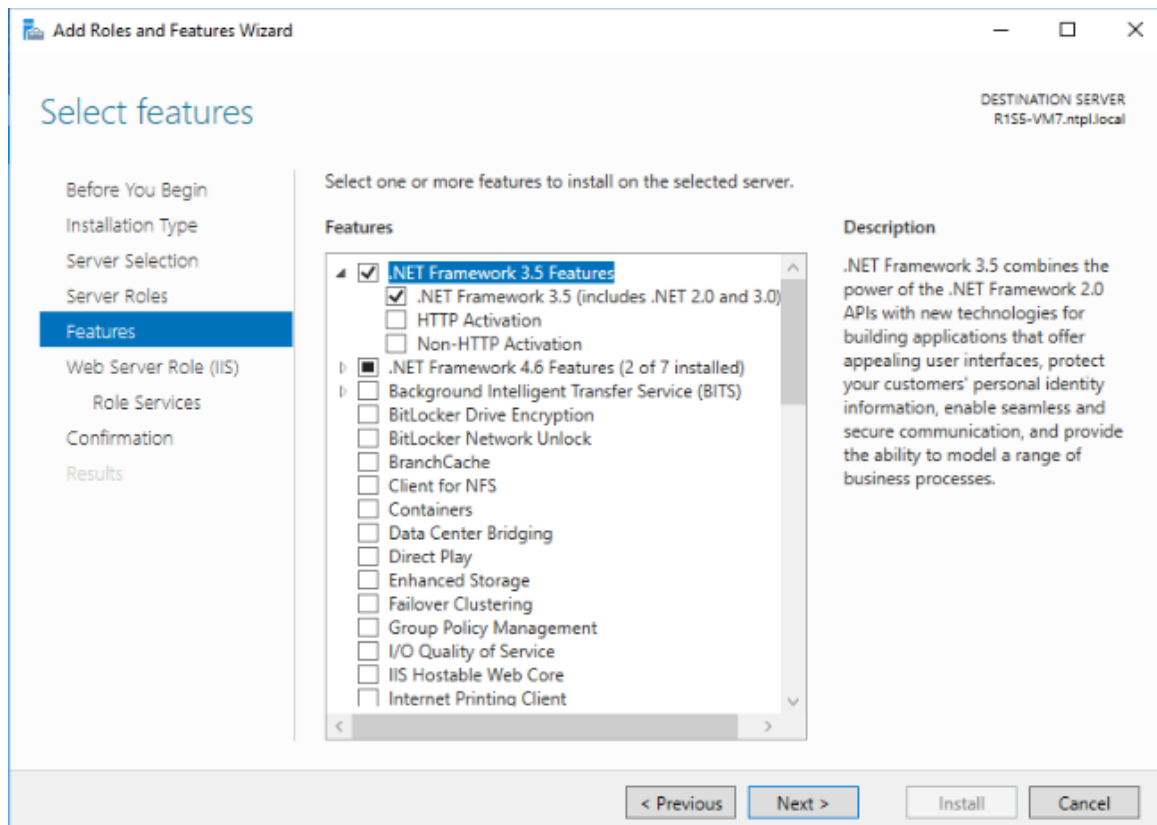


Figure 6

11. Scroll-Down and select **ASP.NET 4.6**.

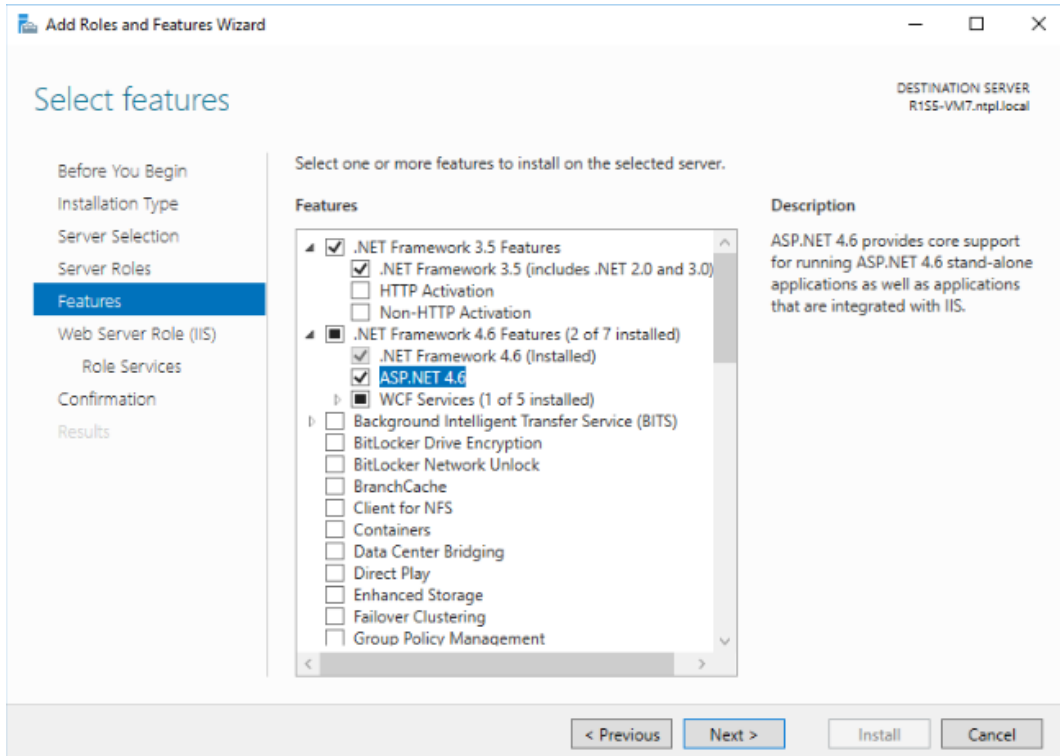


Figure 7

12. Click **Next >**

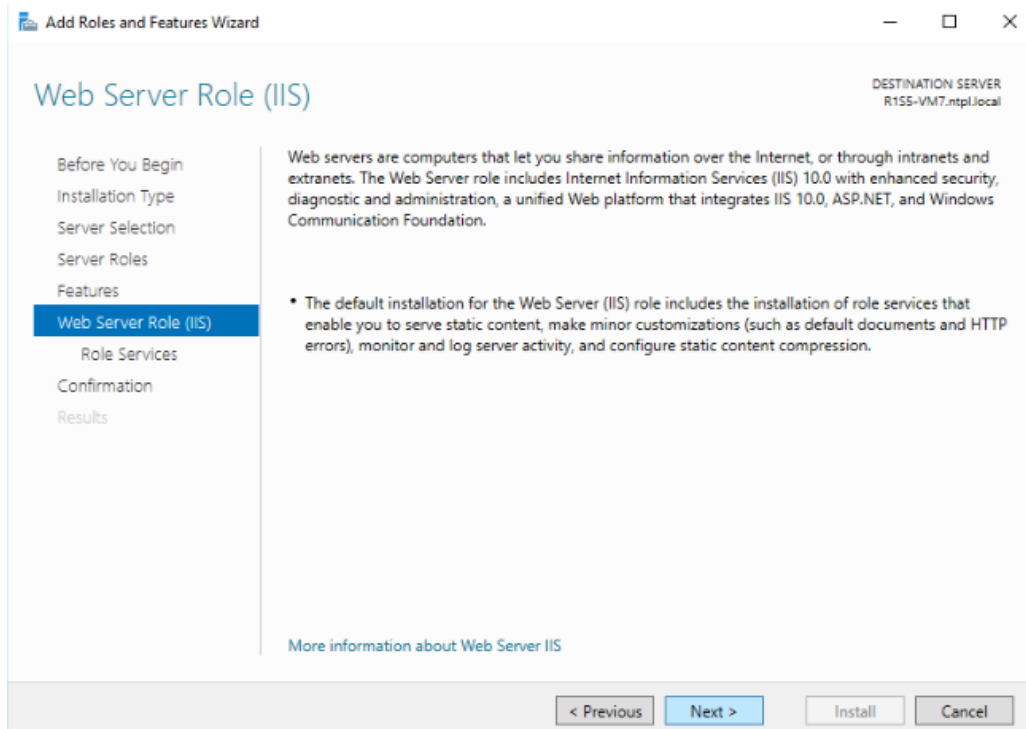


Figure 8

13. Click **Next >**
14. Enable **Custom Logging**, **Logging Tools** and **ODBC Logging** under **Health and Diagnostics**.
15. Enable **Static Content Compression** and **Dynamic Content Compression** under **Performance**.

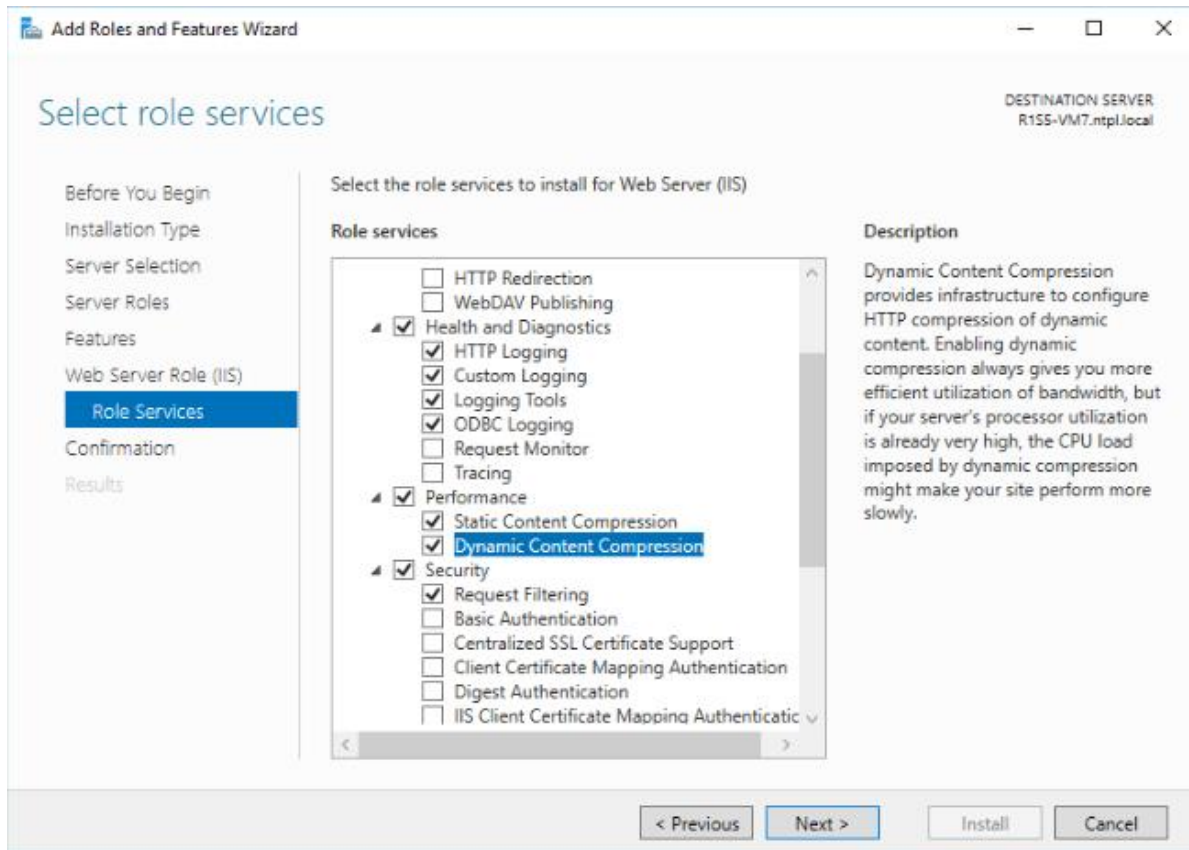


Figure 9

16. Expand **Application Development** and select the sub-options as shown in the figure.

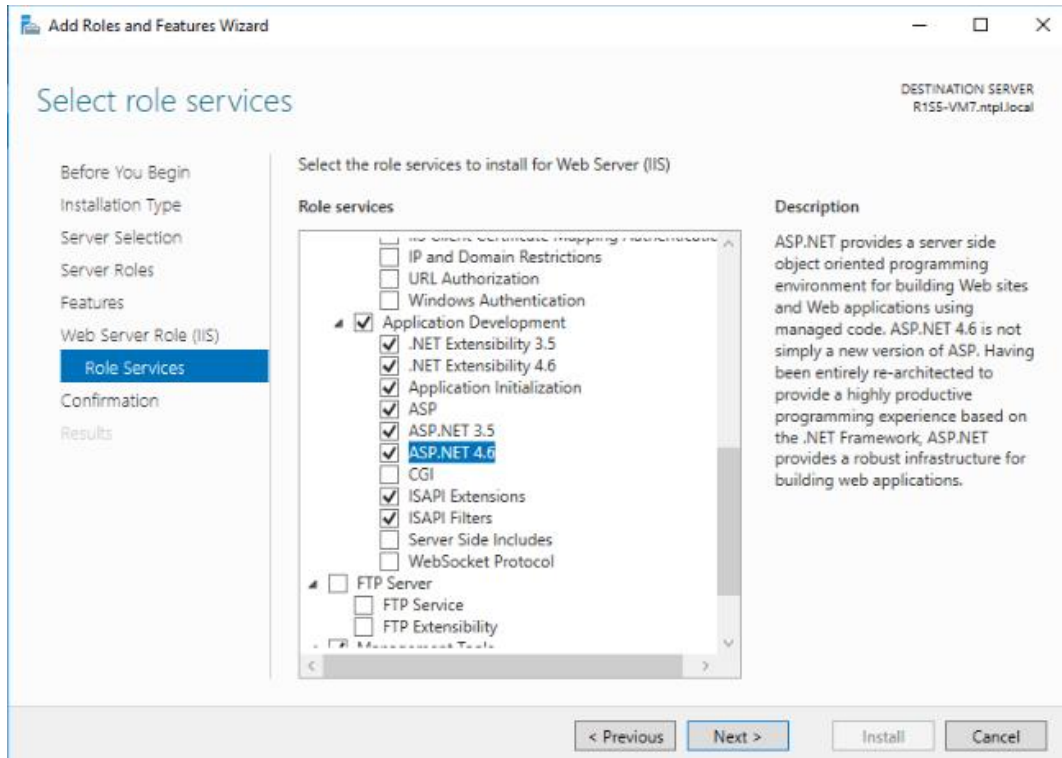


Figure 20

17. Expand **IIS 6 Management Compatibility** and enable all the sub-options.

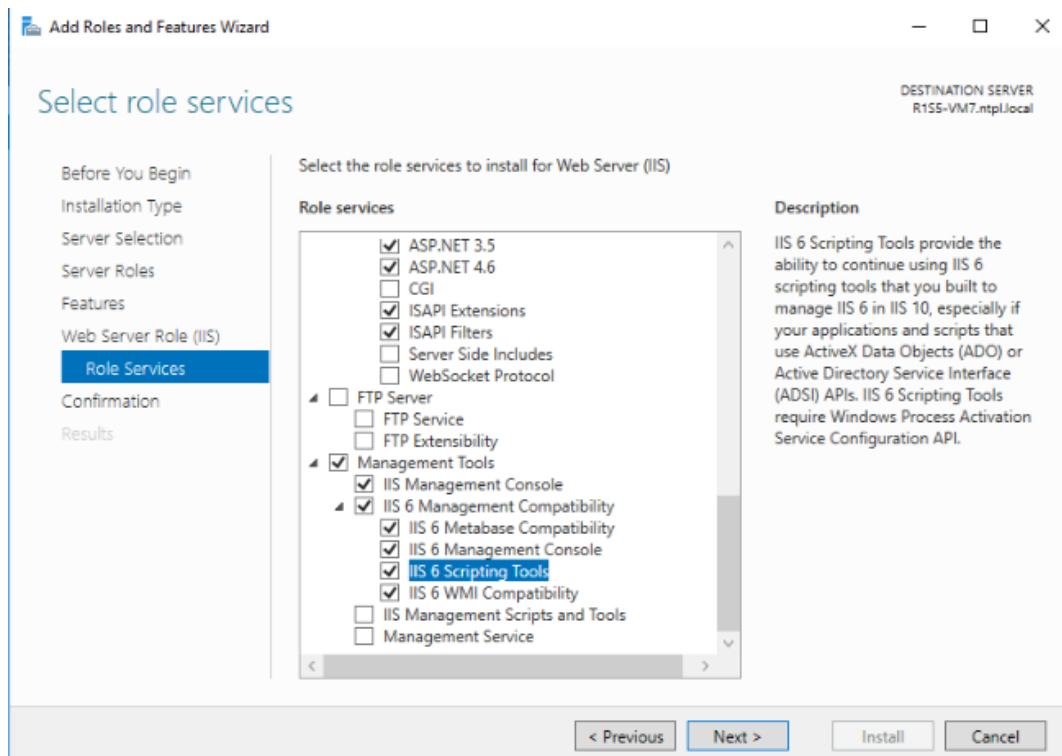


Figure 31

18. Click **Next**.

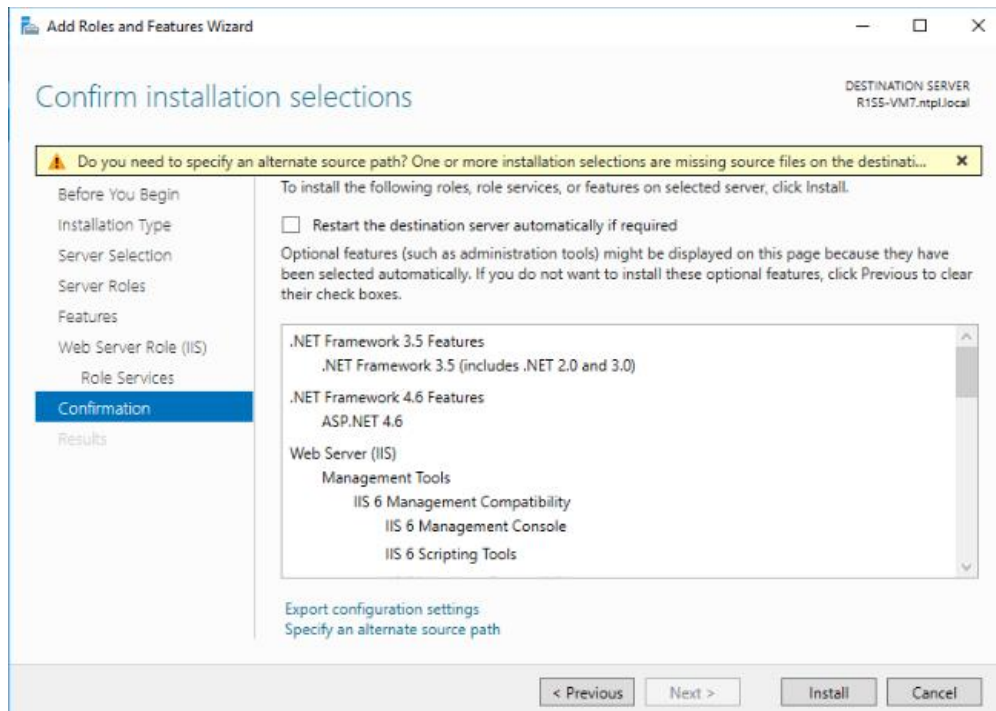


Figure 12

19. Click **Install**.

Win 2K12 and Win 2K12 R2 Server

Install and customize Web Server (IIS)

By default, all role services are not installed while installing IIS 8.0 on Win2k12, Win 2K12 R2 server. You need to manually select **Application Development** and **IIS Management** role services while installing the web server (IIS). These are essential services and should be up and running prior to installing EventTracker.

This section helps to install web server (IIS) with role services required for EventTracker.

20. Log on to **Win2k12** server.

21. Click **Server Manager**  icon available in the task bar.

Server Dashboard displays.

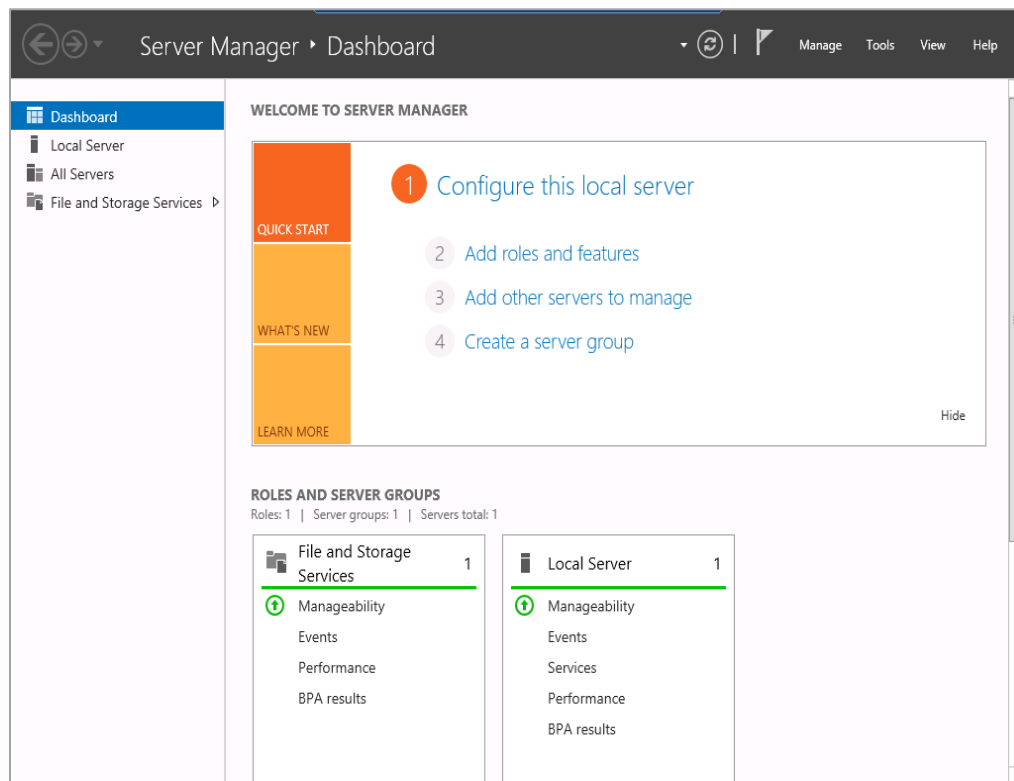


Figure 43

22. Select **Add Roles and Features**.

Add Roles and Features Wizard displays.

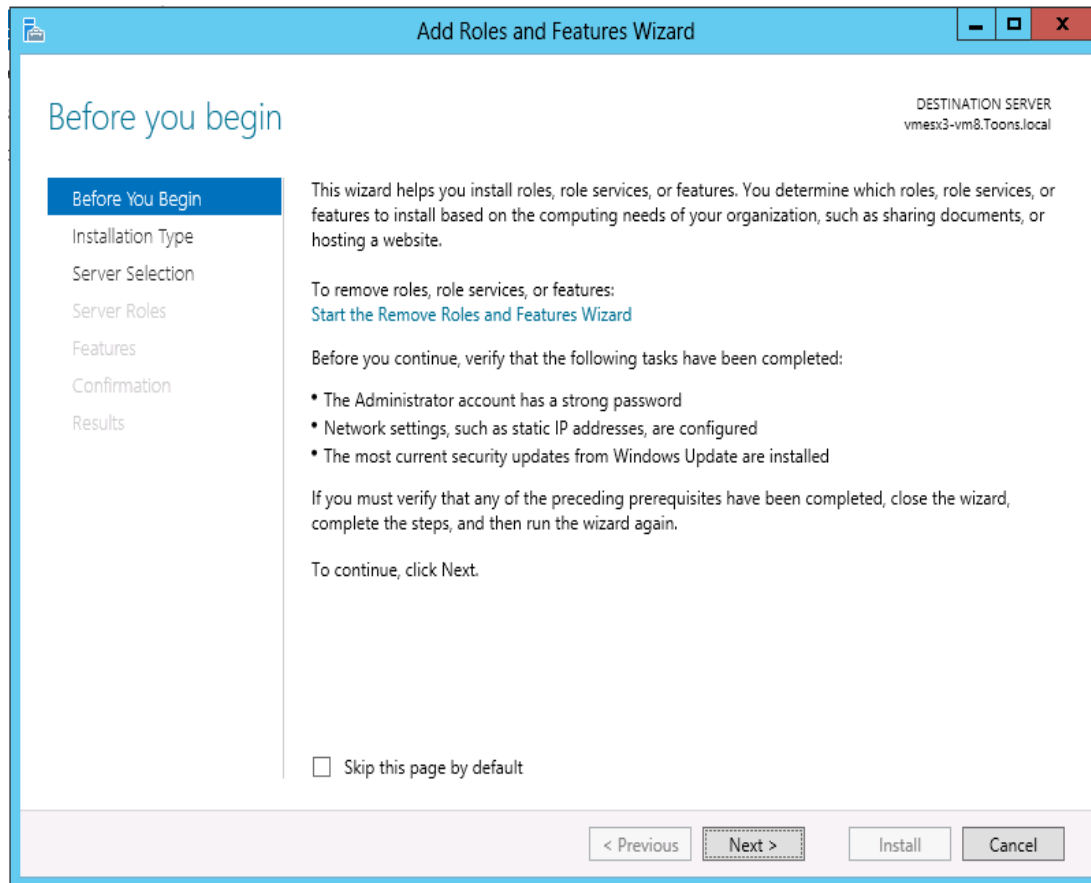


Figure 14

23. Click **Next >**

Select Installation Type window displays.

'Role based or feature based selection' option is selected by default. You can select the installation type as per the requirement.

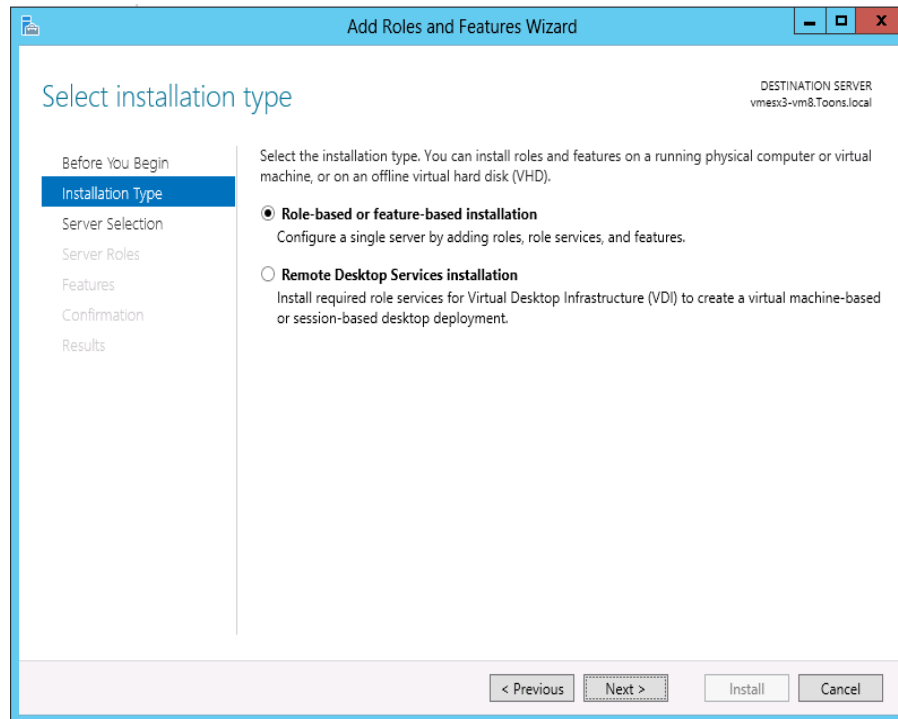


Figure 15

24. Click **Next >**

Select destination server window displays.

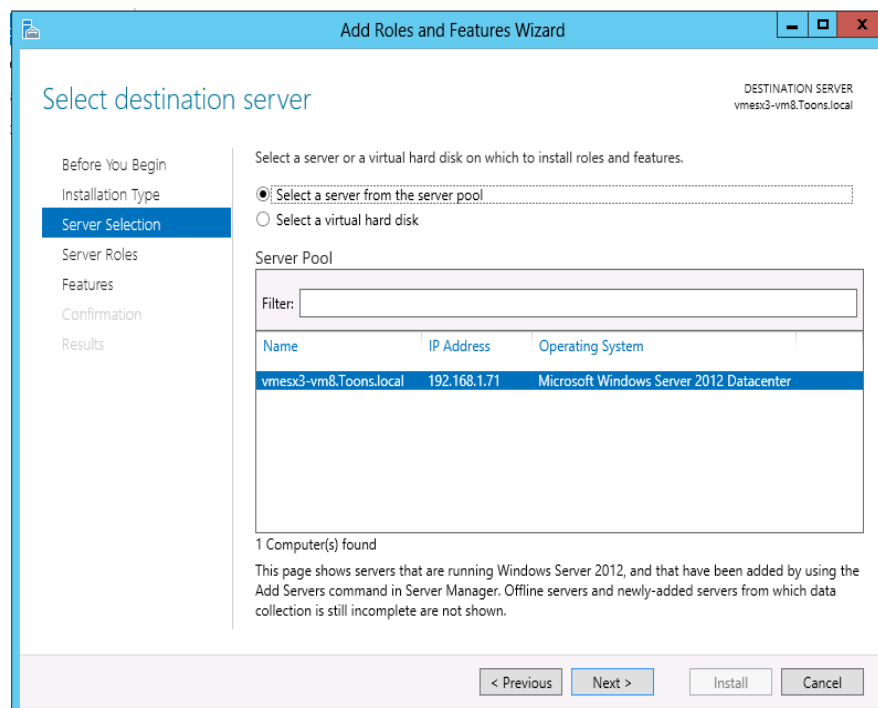


Figure 16

25. Select Local Server from the server pool, and then select **Next>**.
26. In **Roles** pane, select the **Application Server**, and then select **Web Server (IIS)**.

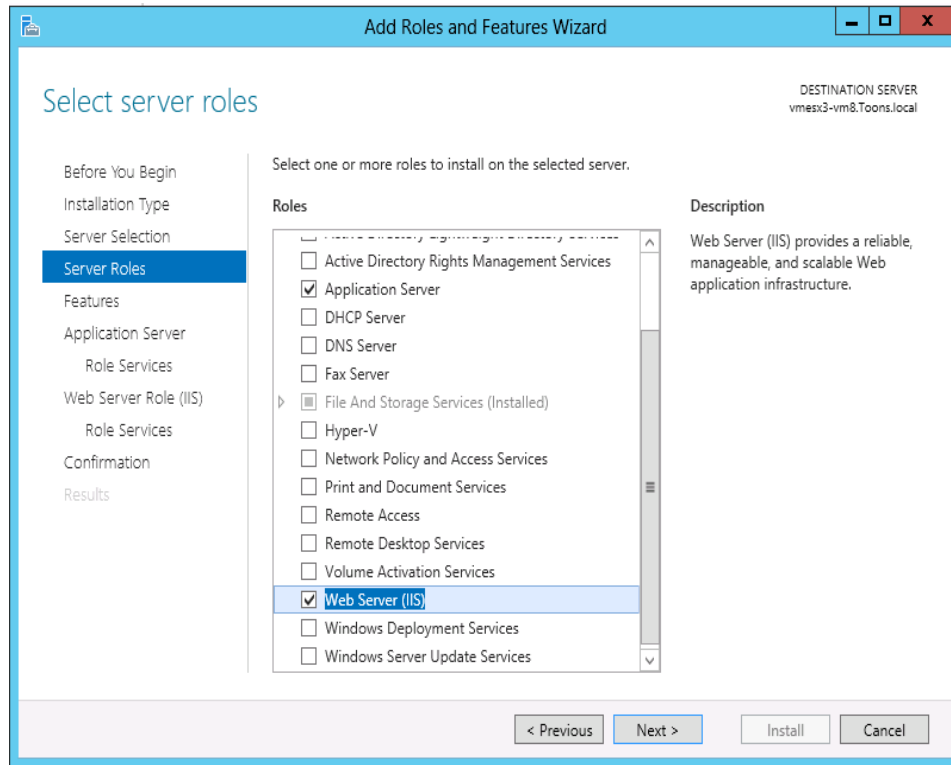


Figure 17

Add Roles and Features Wizard displays the confirmation message.

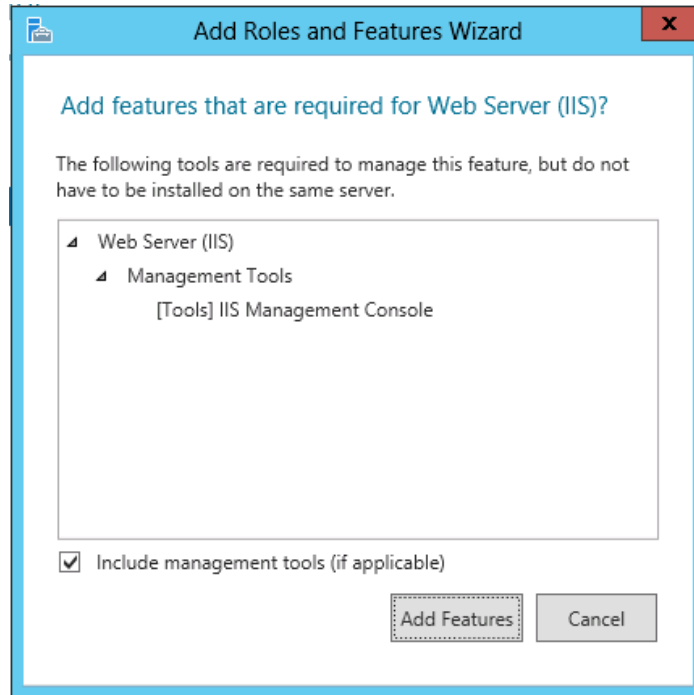


Figure 18

27. Click **Add Features**.

28. Click **Next >**

29. Select **.NET Framework 3.5 Features**, and then select **.NET Framework 3.5 (includes .NET 2.0 and 3.0)** option.

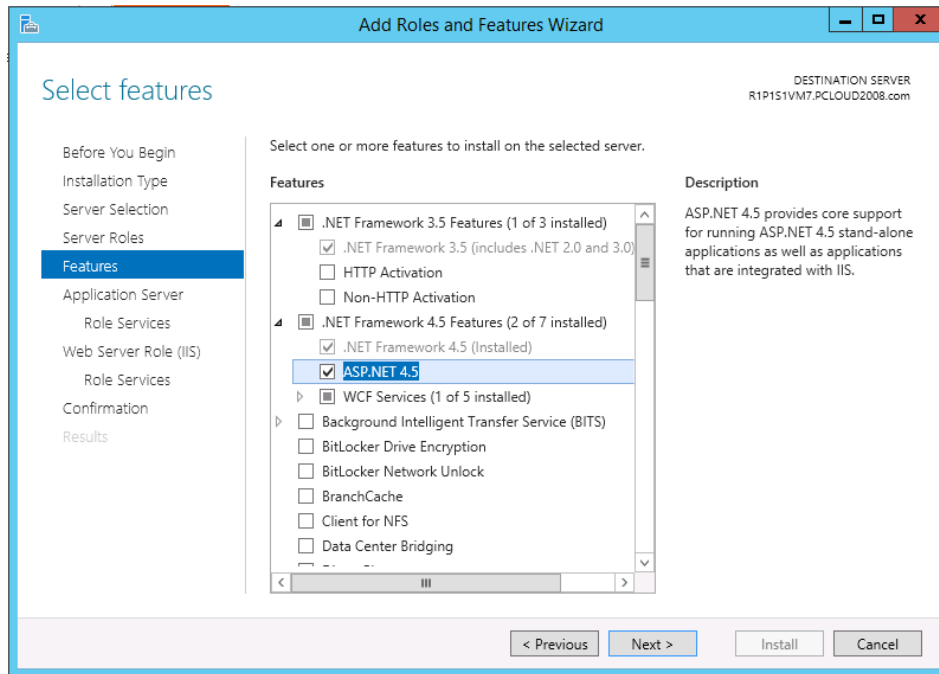


Figure 19

30. Click **Next >**

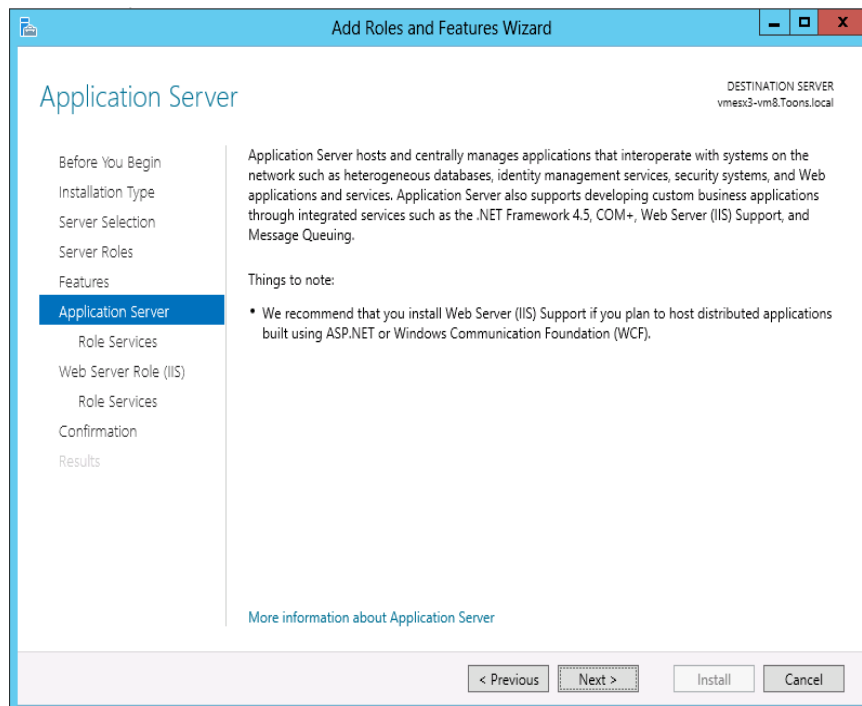


Figure 20

31. Select **Web Server(IIS) Support**.

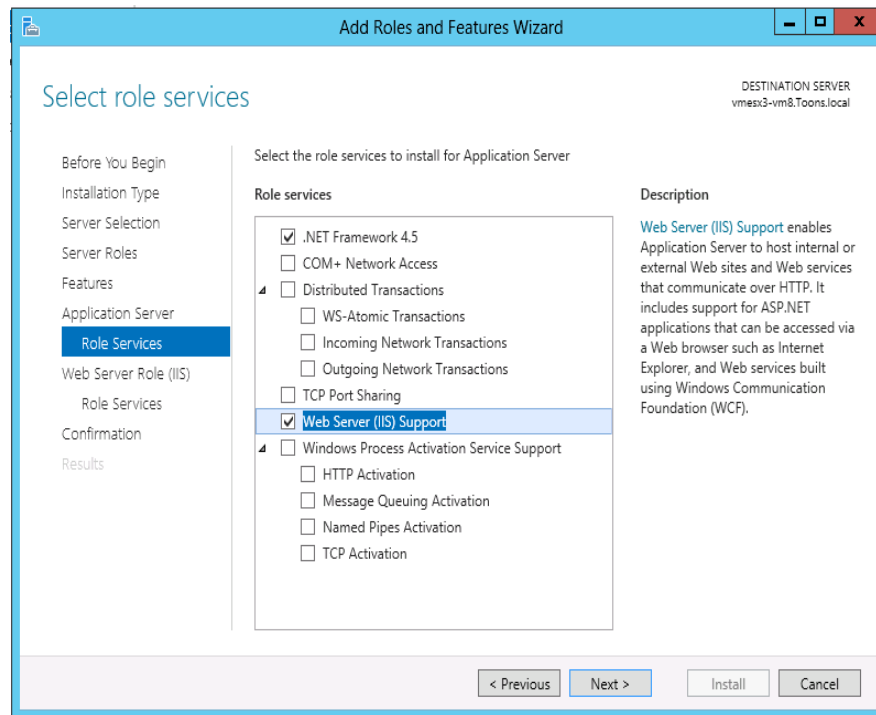


Figure 21

Add Roles and Features Wizard displays the confirmation message.

32. Click **Add Features**.

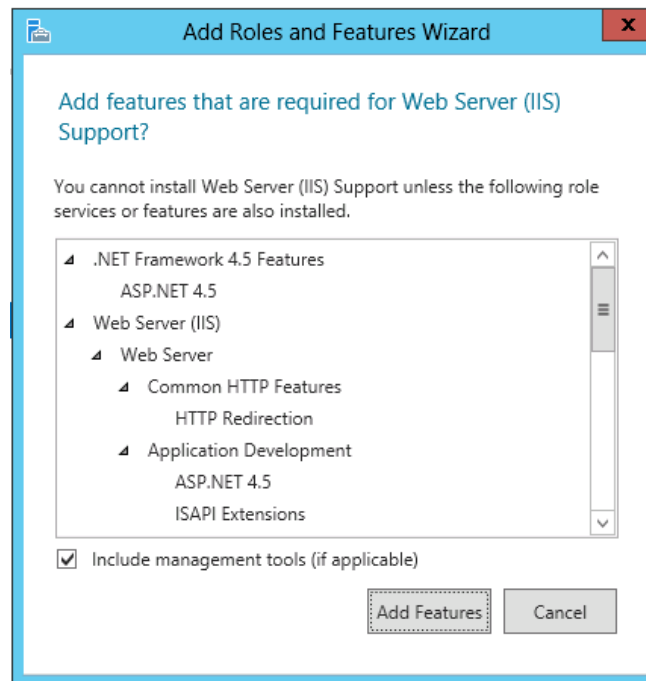


Figure 22

33. Click **Next >**

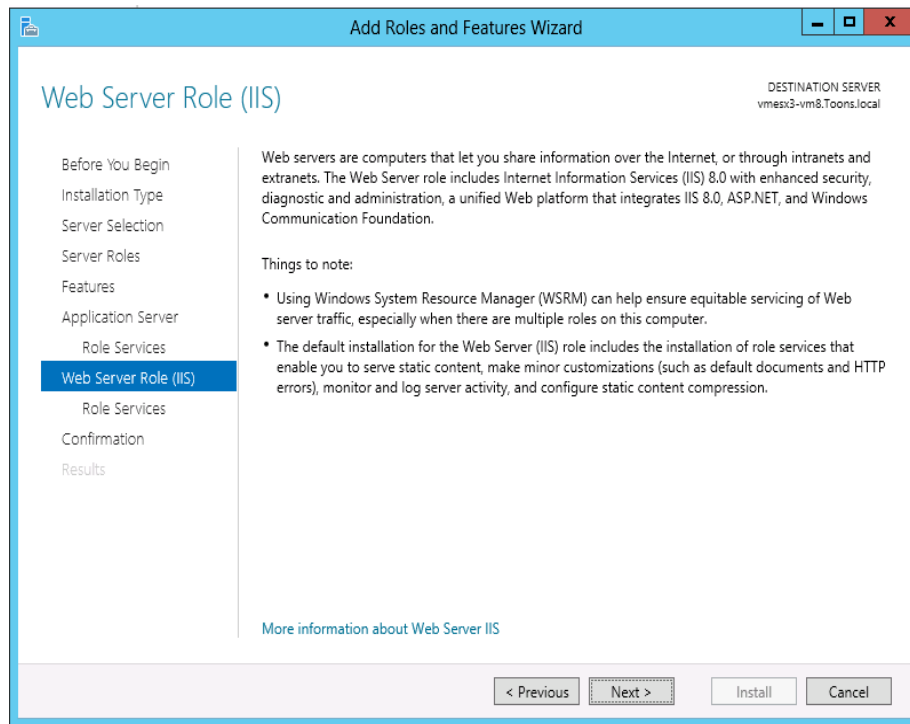


Figure 23

Enable IIS 6 Management Compatibility.

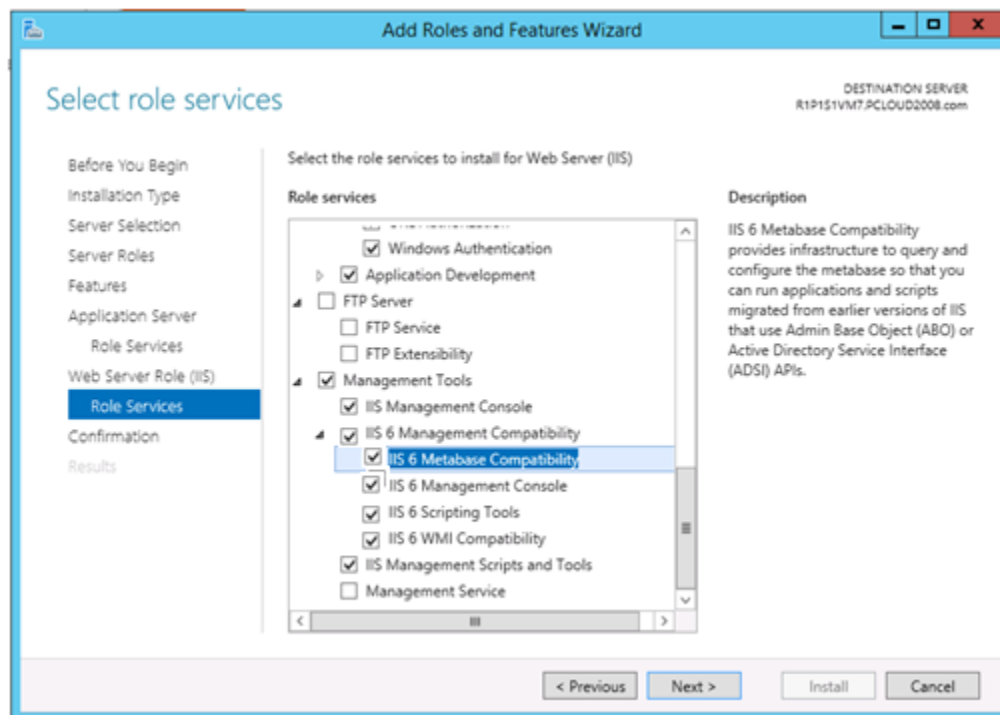


Figure 24

34. Scroll down and expand **Application Development** node. Select **.NET Extensibility 3.5, ASP.NET 3.5**.

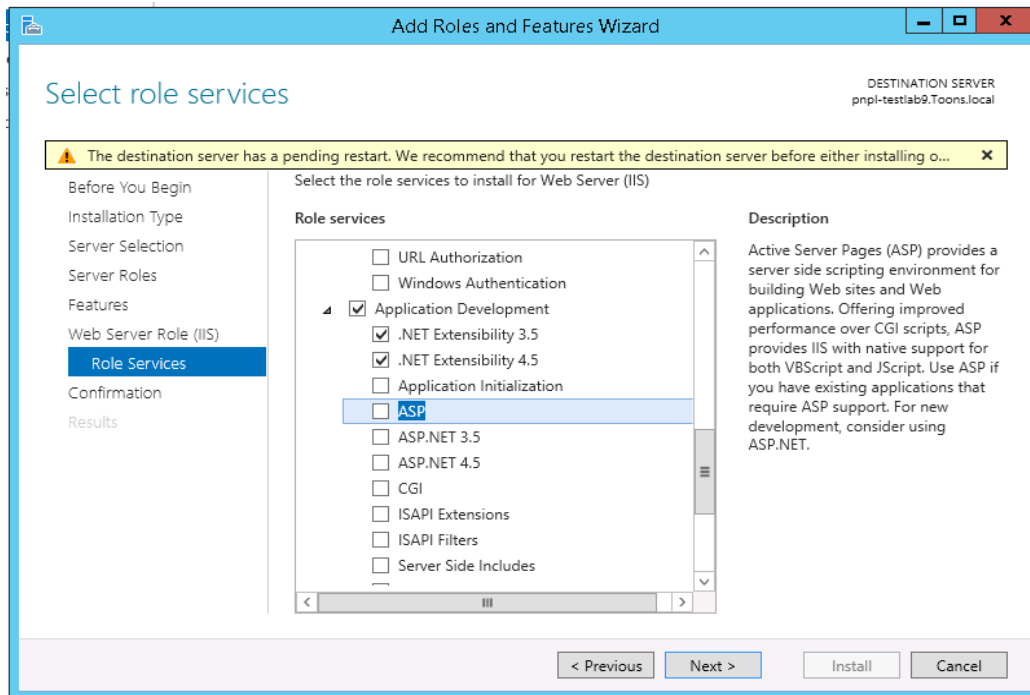


Figure 25

35. Enable ASP.

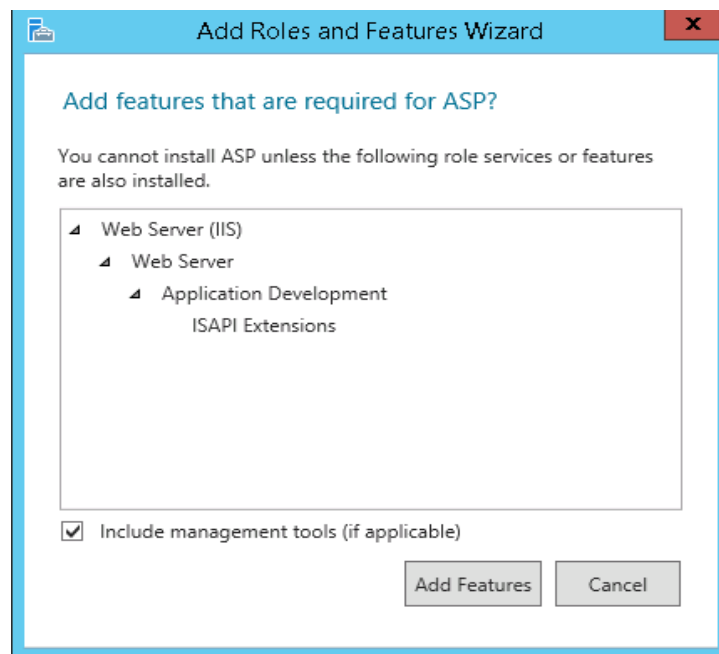


Figure 26

36. Click on **Add Features**.

37. Similarly, select the checkbox ASP.NET 3.4.
The below page displays.

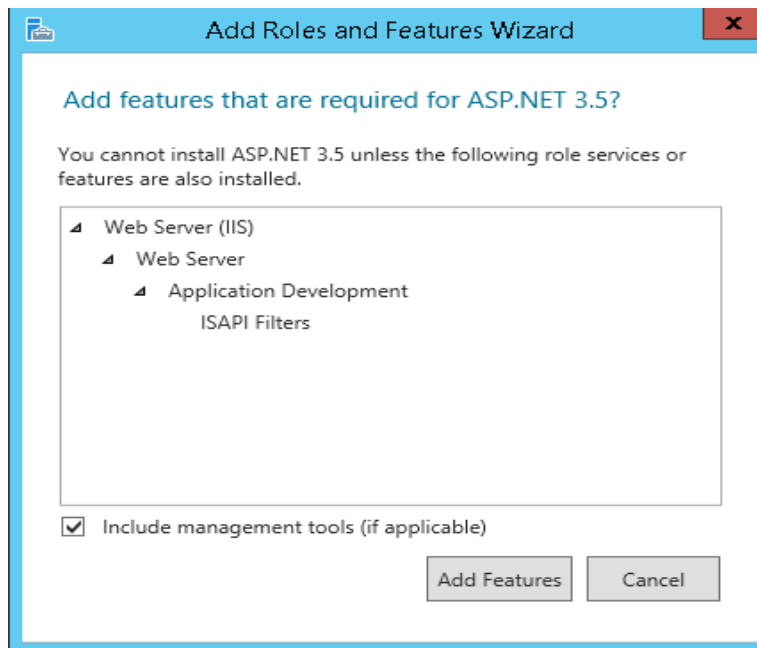


Figure 27

38. Click on **Add features**.

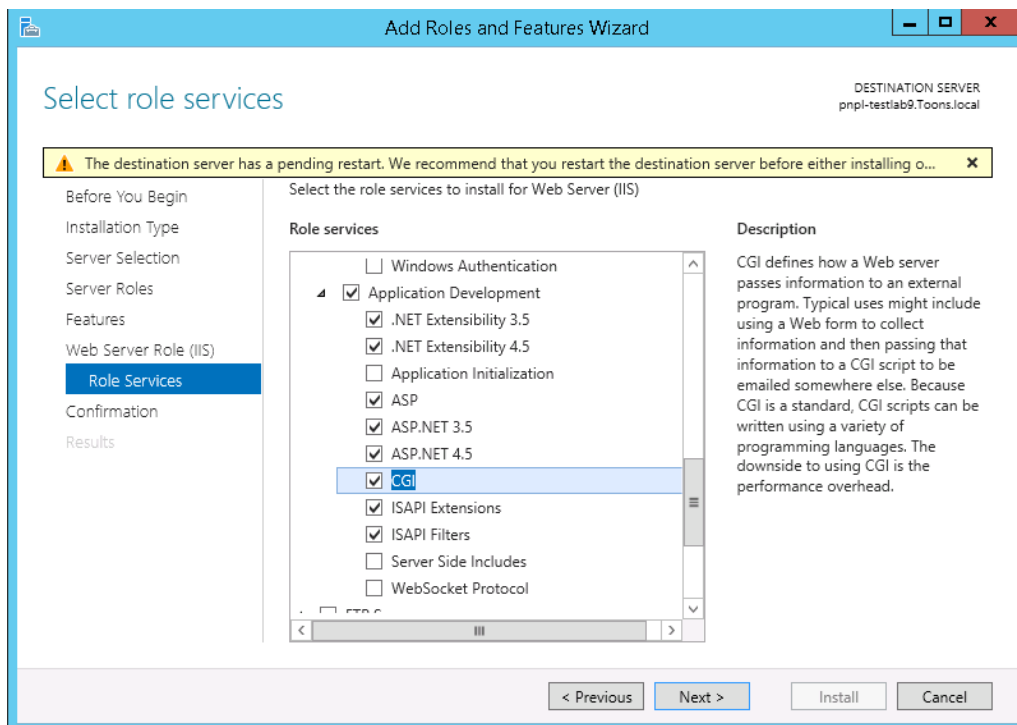


Figure 28

39. Scroll down and expand **Management Tools** node. Select **Management Tools** and all the **Sub options**.
40. Enable IIS 6 Management Console.

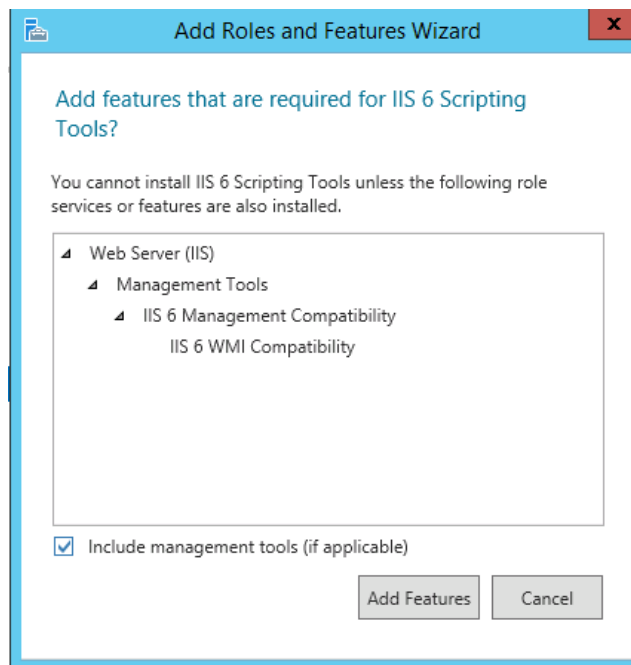


Figure 29

Click on **Add Features**.

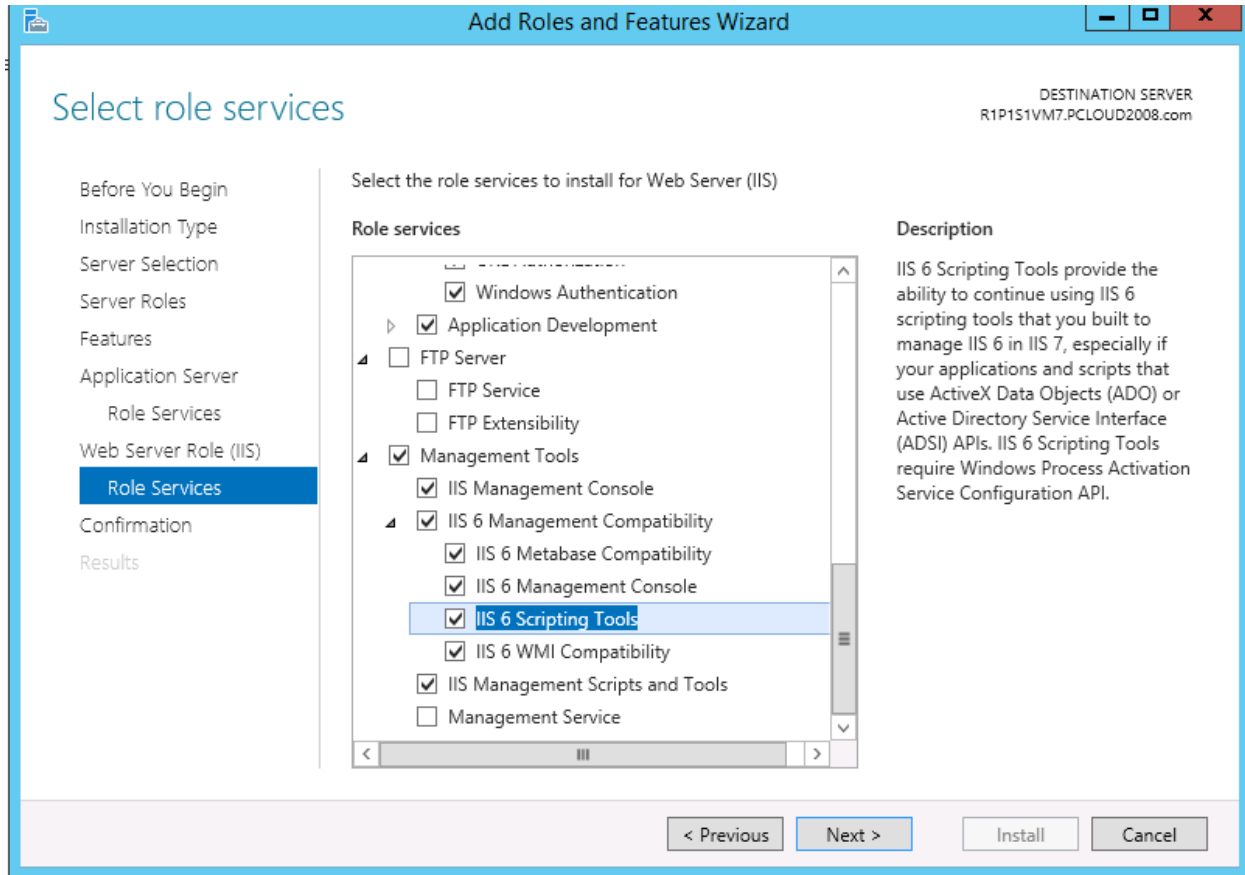


Figure 30

Click Next.

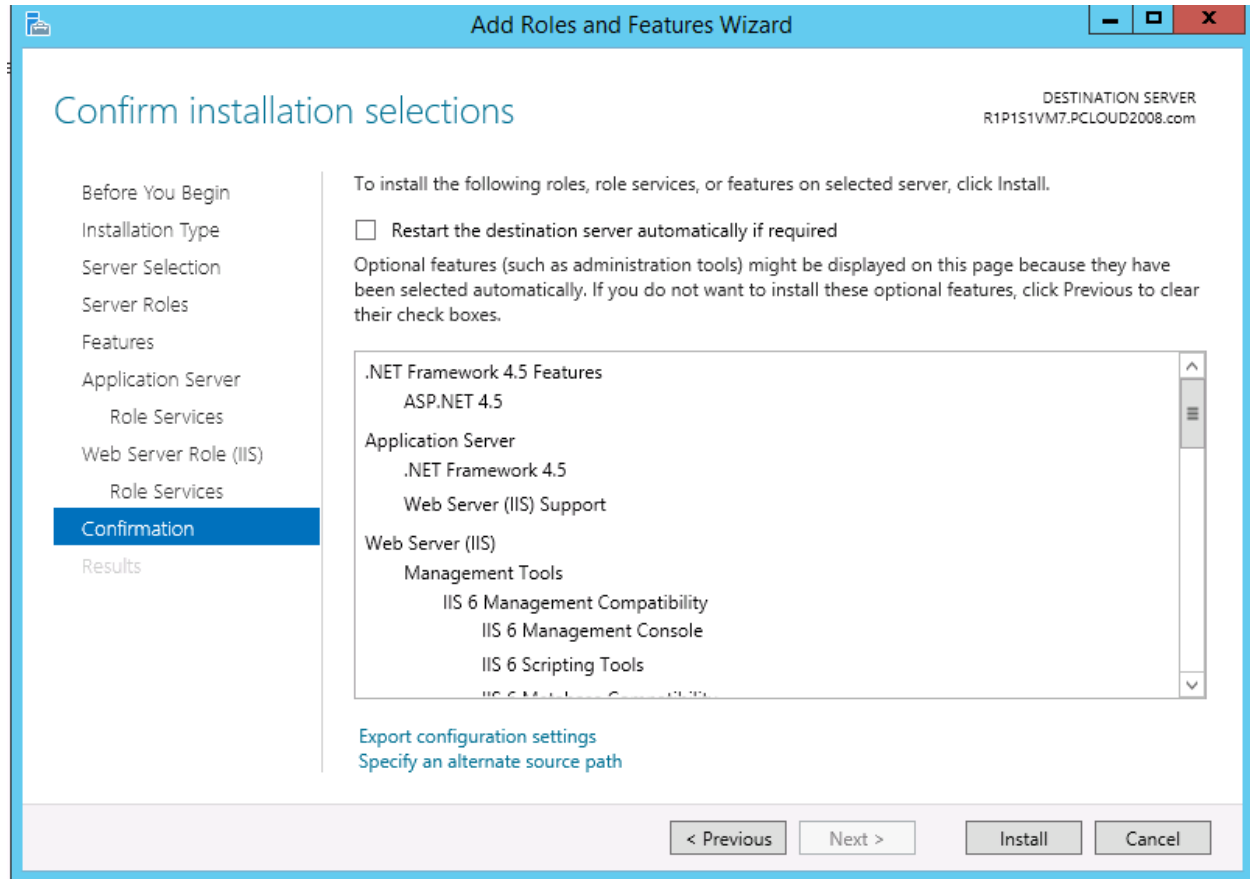


Figure 31

Add Roles and Features Wizard displays with confirmation message.

41. Click **Install**.

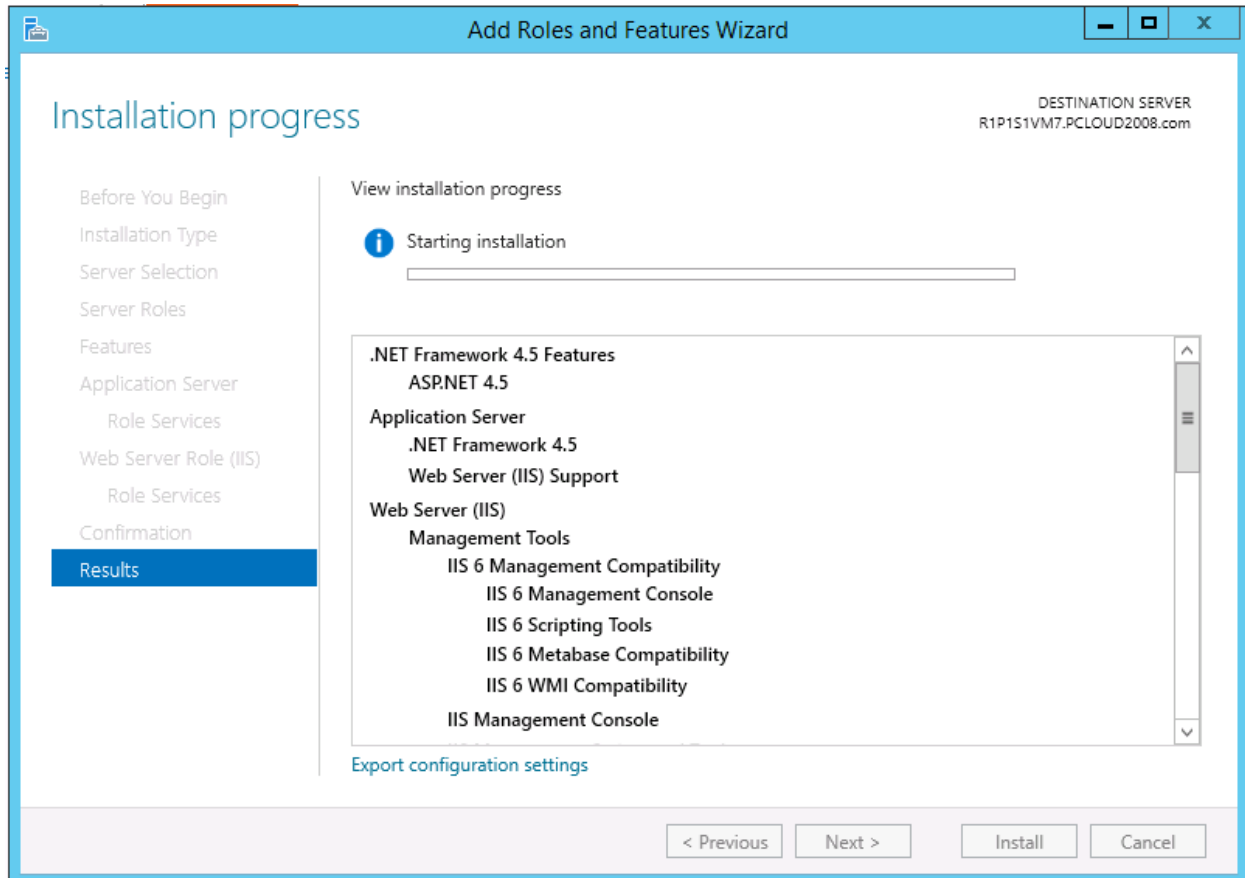


Figure 32

42. If required, click **Specify an alternate source path**.
43. Select **Restart the destination server automatically if required** option, to restart the server once the installation is complete.
44. Click the **Install** button.

Windows 2K8 and 2K8 R2 Server

Install Web Server (IIS)

By default, all role services are not installed while installing IIS on Win2k8 / 2k8 R2 server. You need to manually select **Application Development** and **IIS Management** role services while installing the web server (IIS). These are essential services and should be up and running prior to installing EventTracker.

This section helps to install web server (IIS) with role services required for EventTracker.

1. Log on to **Win2k8 R2** server.
2. Select the **Start button**, select **Administrative Tools**, and then select **Server Manager**.

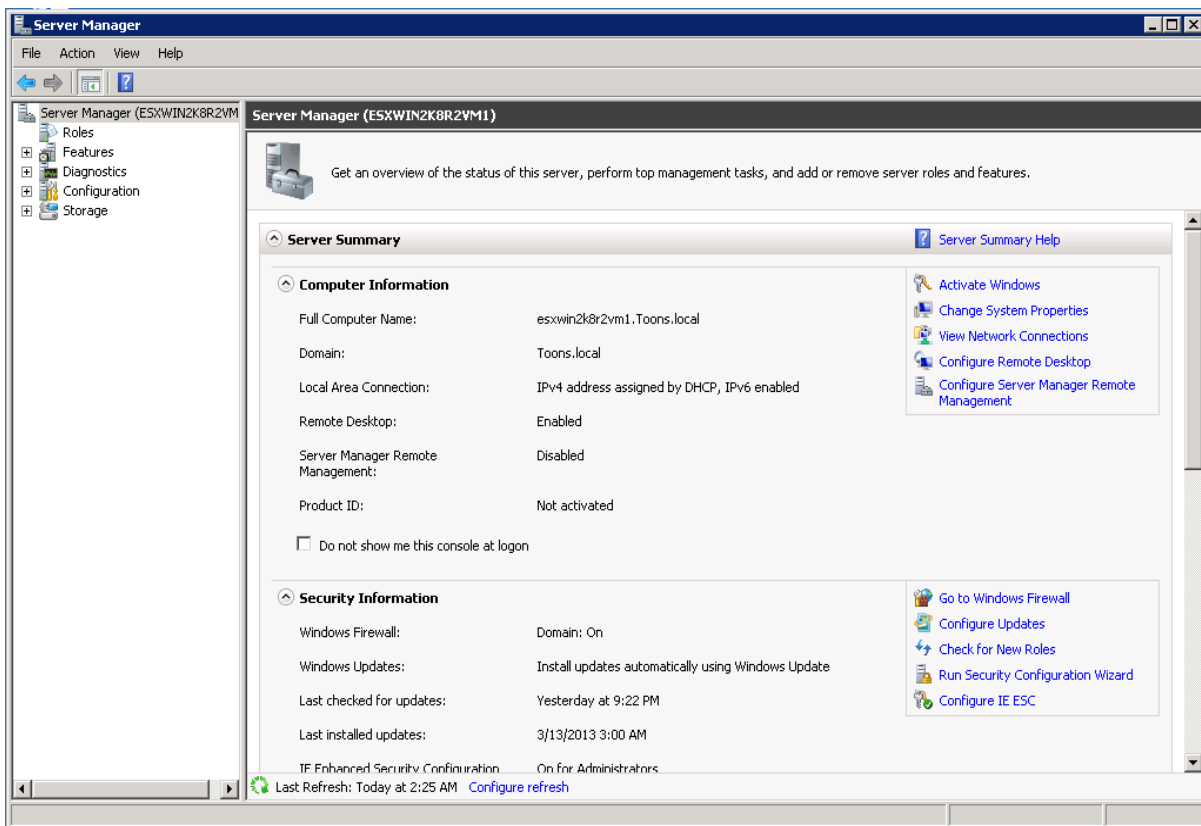


Figure 33

3. Click **Roles** on the left pane.

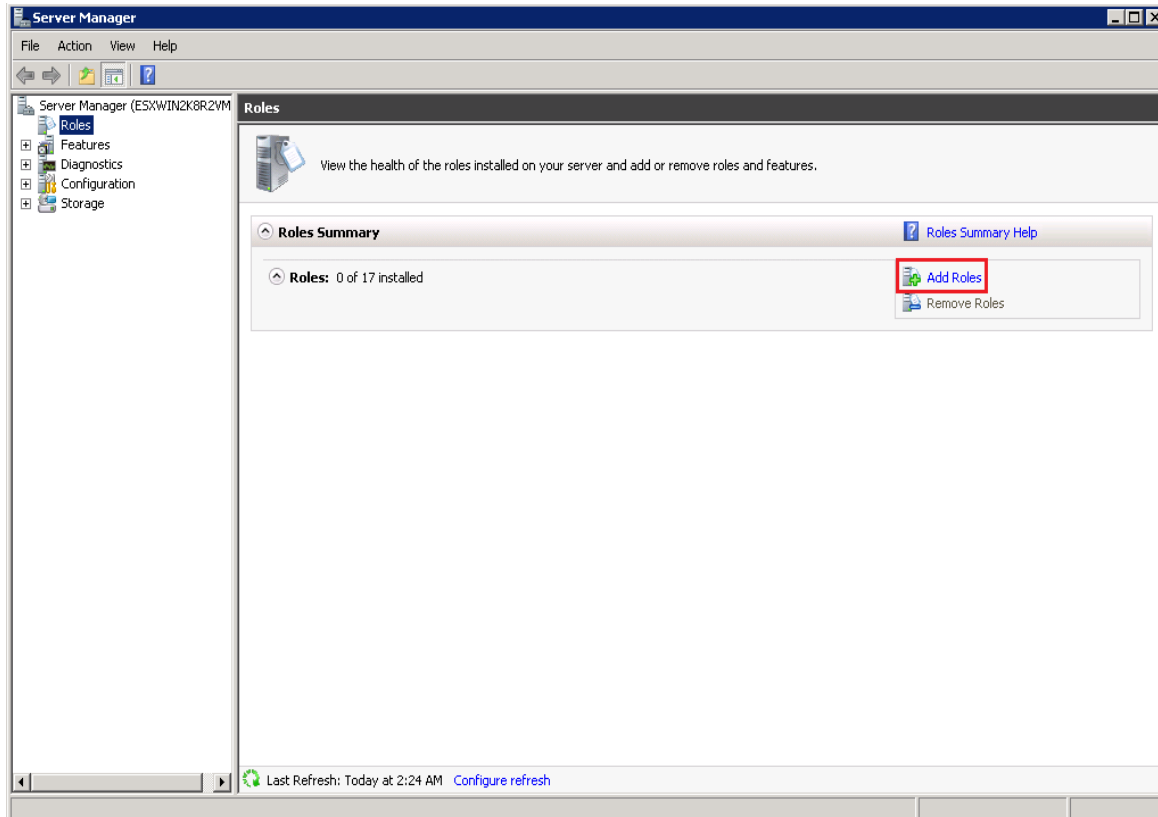


Figure 34

4. Click **Add Roles** on the Roles Summary pane.

Server Manager displays the **Add Roles Wizard**.

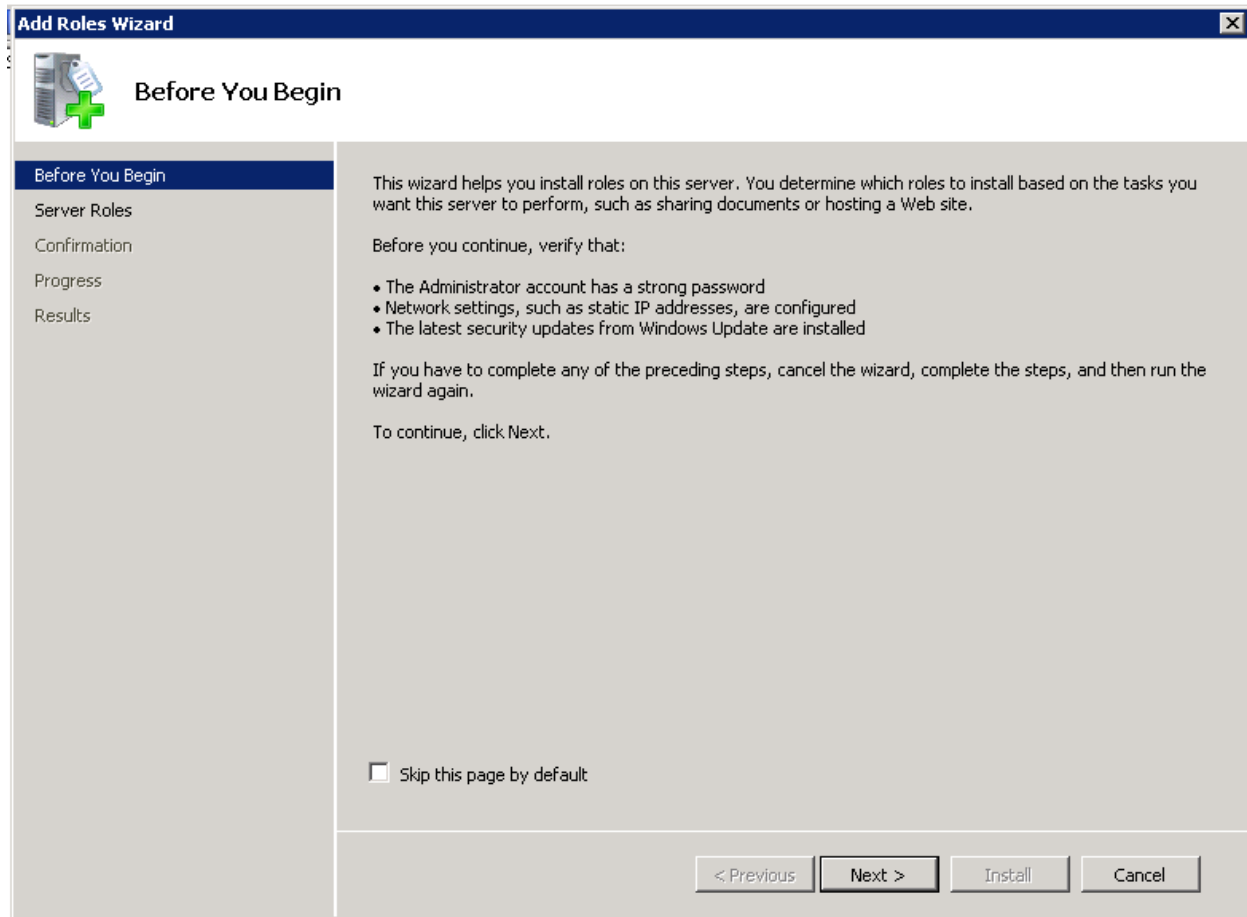


Figure 35

5. Click **Next >**.
Add Roles Wizard displays Select Server Roles window.
6. Select the **Web Server (IIS)** option.

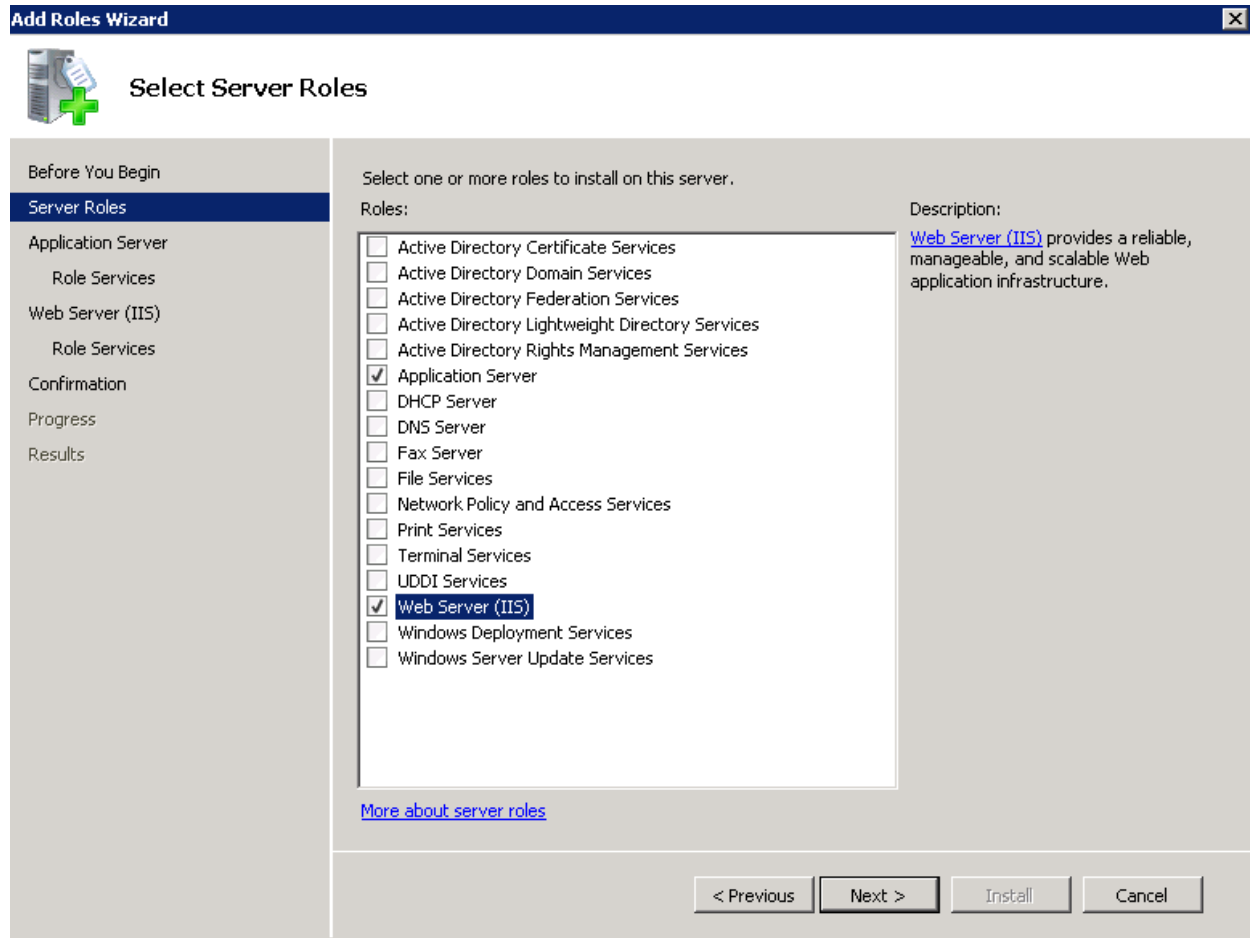


Figure 36

7. Click **Next >**.

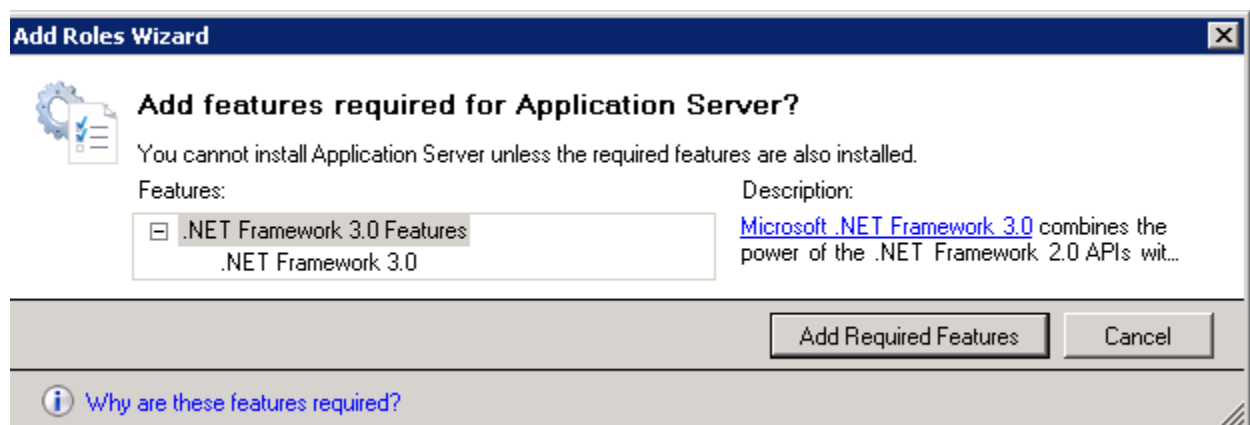


Figure 37

8. Click **Add Required Features**.

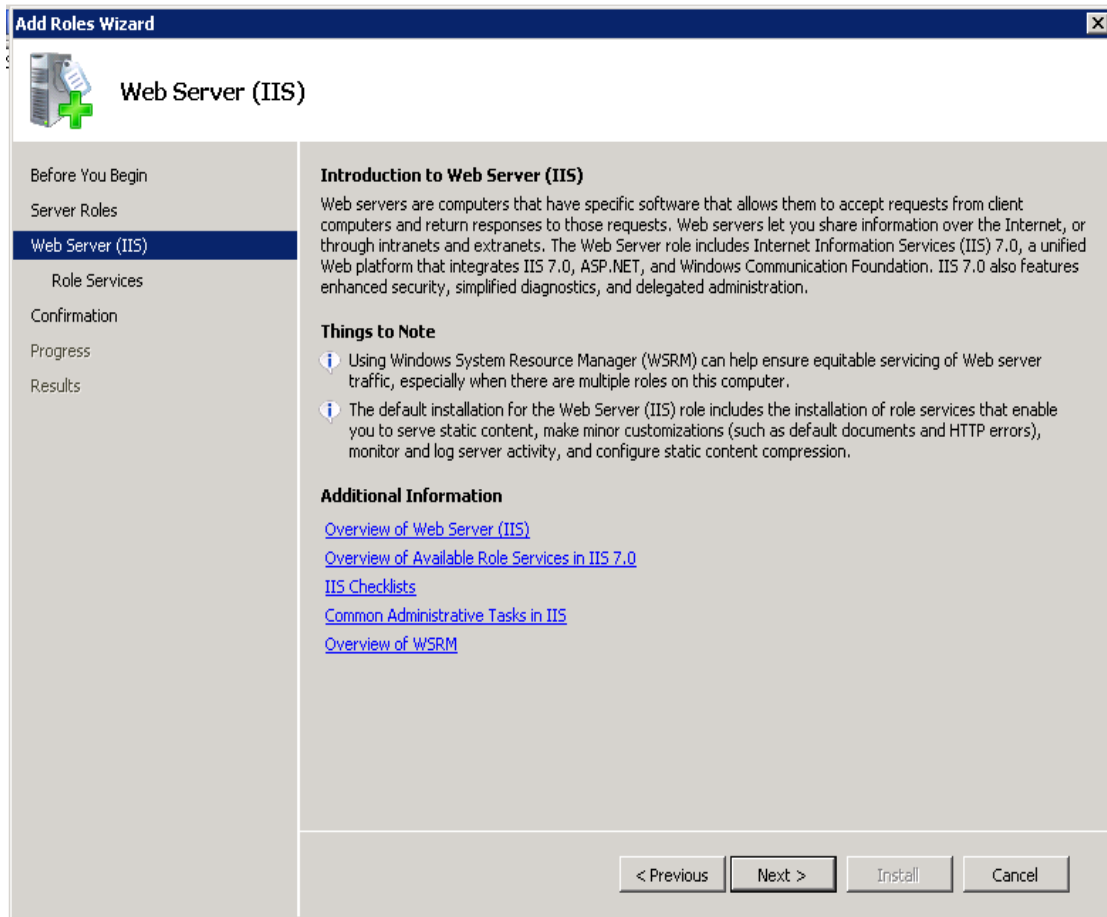


Figure 38

9. Click **Next >**.

Add Roles Wizard displays the Select Role Services window.

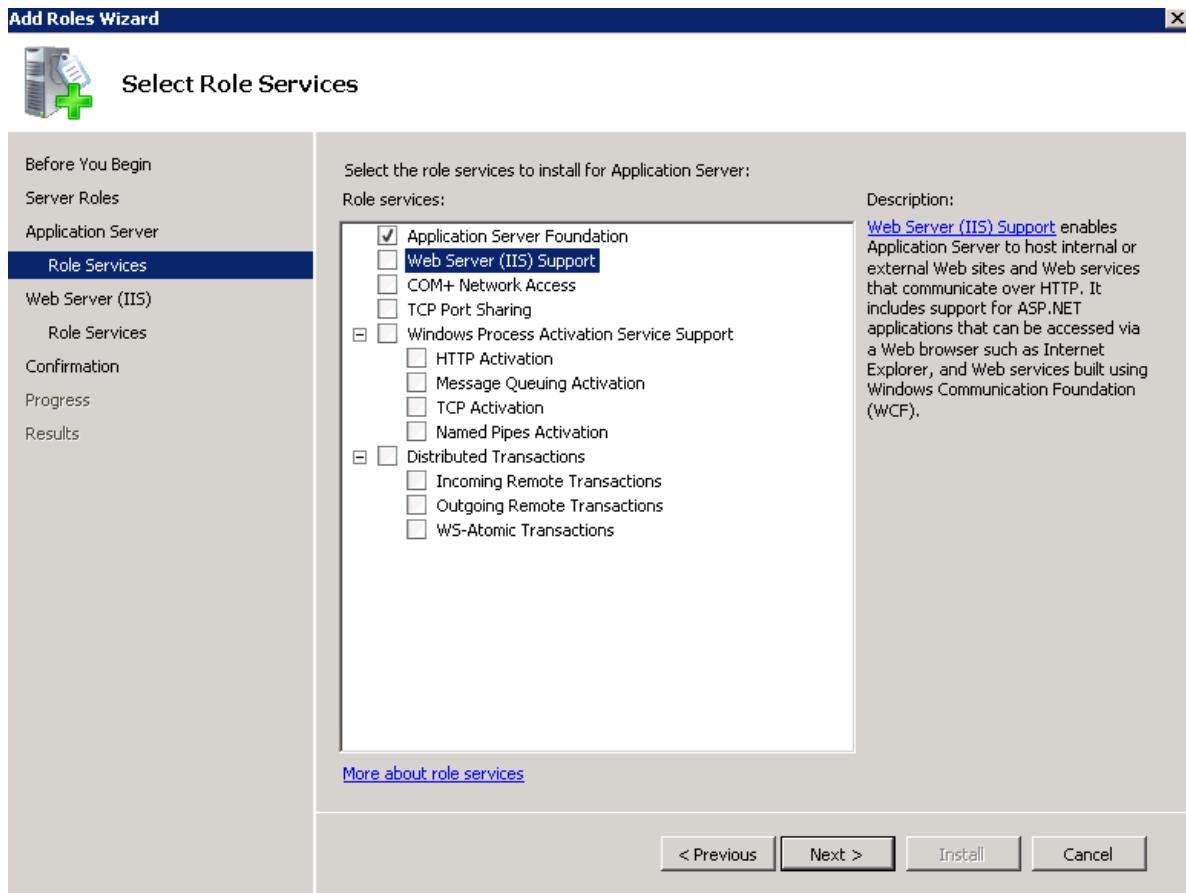


Figure 39

10. Select **ASP.NET** under **Application Development**.

Add Roles Wizard displays the confirmation message box.

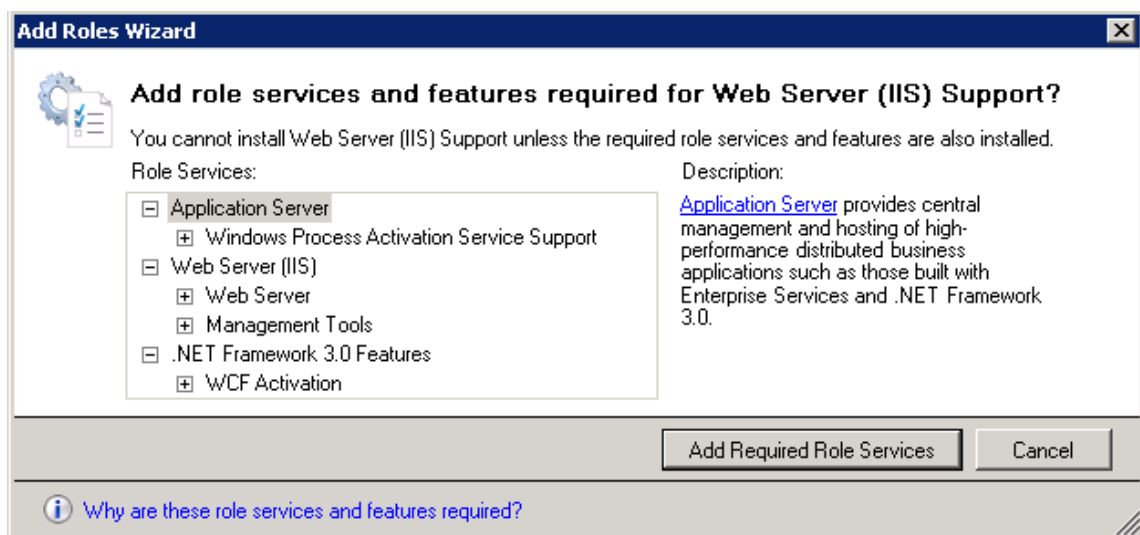


Figure 40

11. Click **Add Required Role Services**.

Required role services ASP.NET, .NET Extensibility, ISAPI Extensions, and ISAPI Filters are selected.

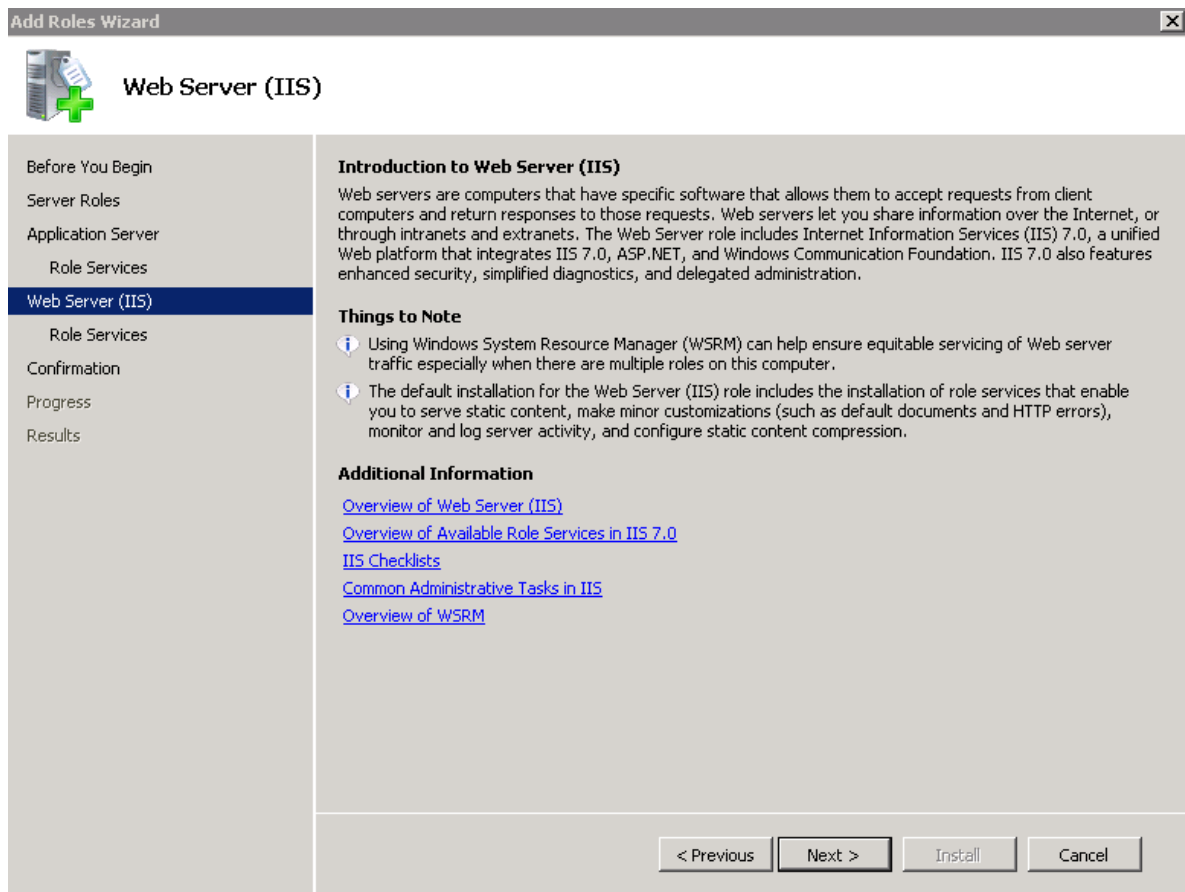


Figure 41

12. Click **Next**.

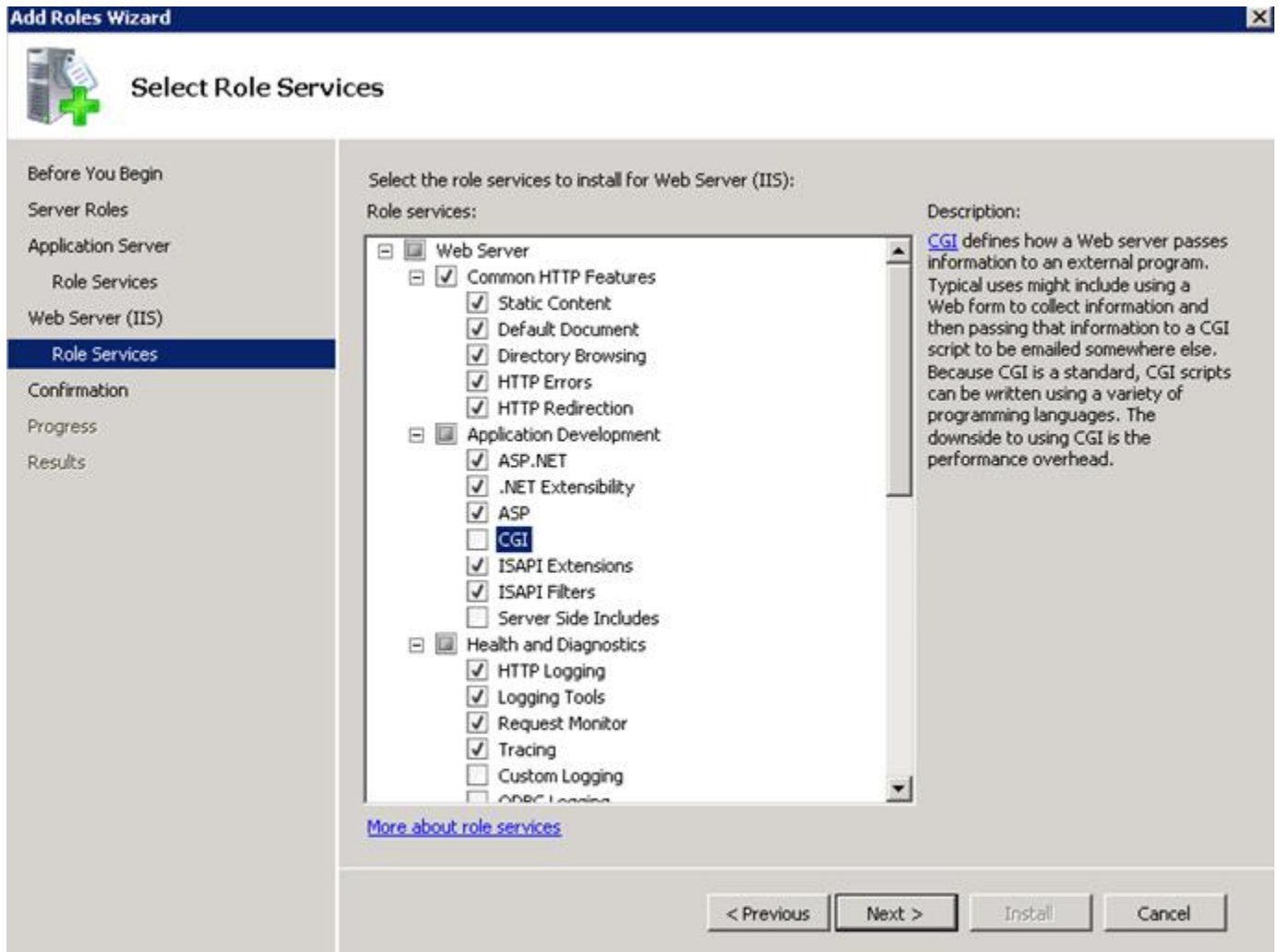


Figure 42

13. Scroll down and select **IIS Management Scripts and Tools** and **Management Service** under **Management Tools**.
14. Select **IIS 6.0 Management Compatibility**. All sub-options are selected by default.

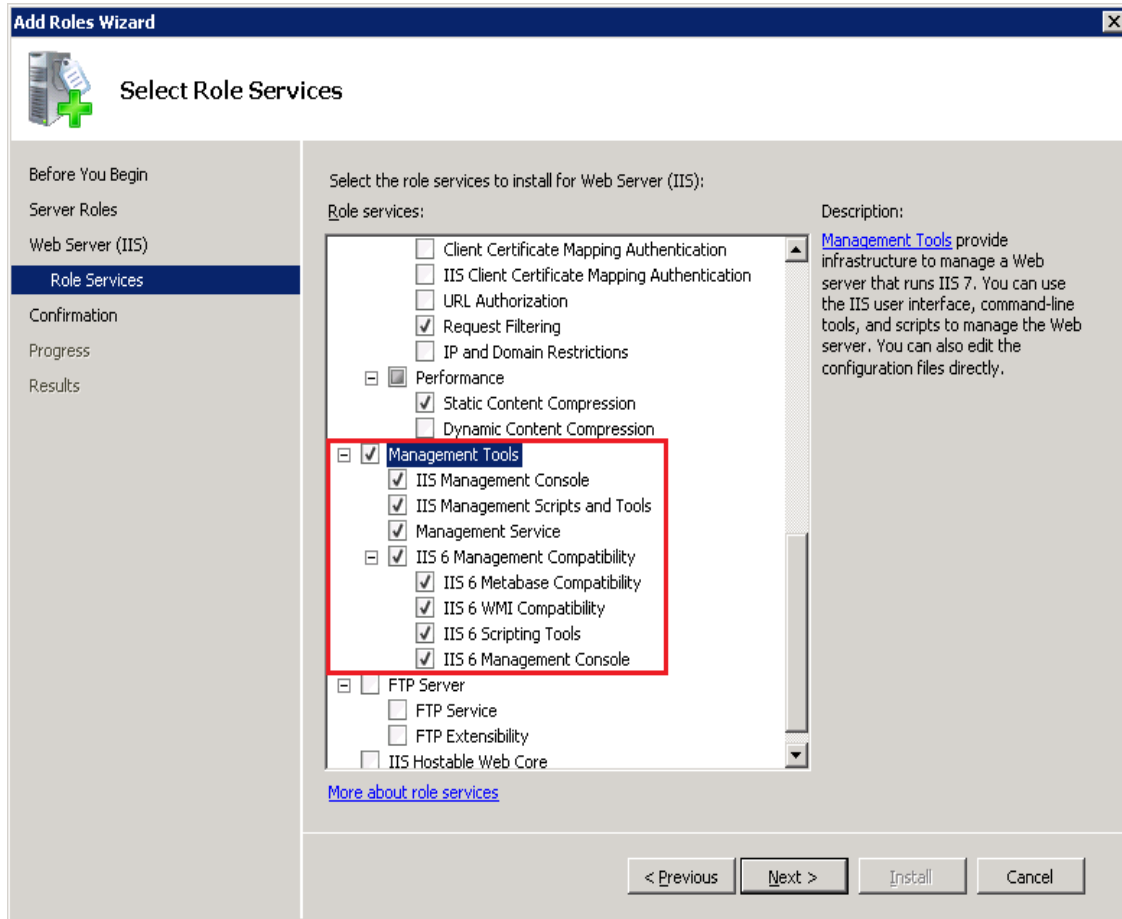


Figure 43

15. Click **Next >**.

Add Roles Wizard displays the **Confirm Installation Selections** window.

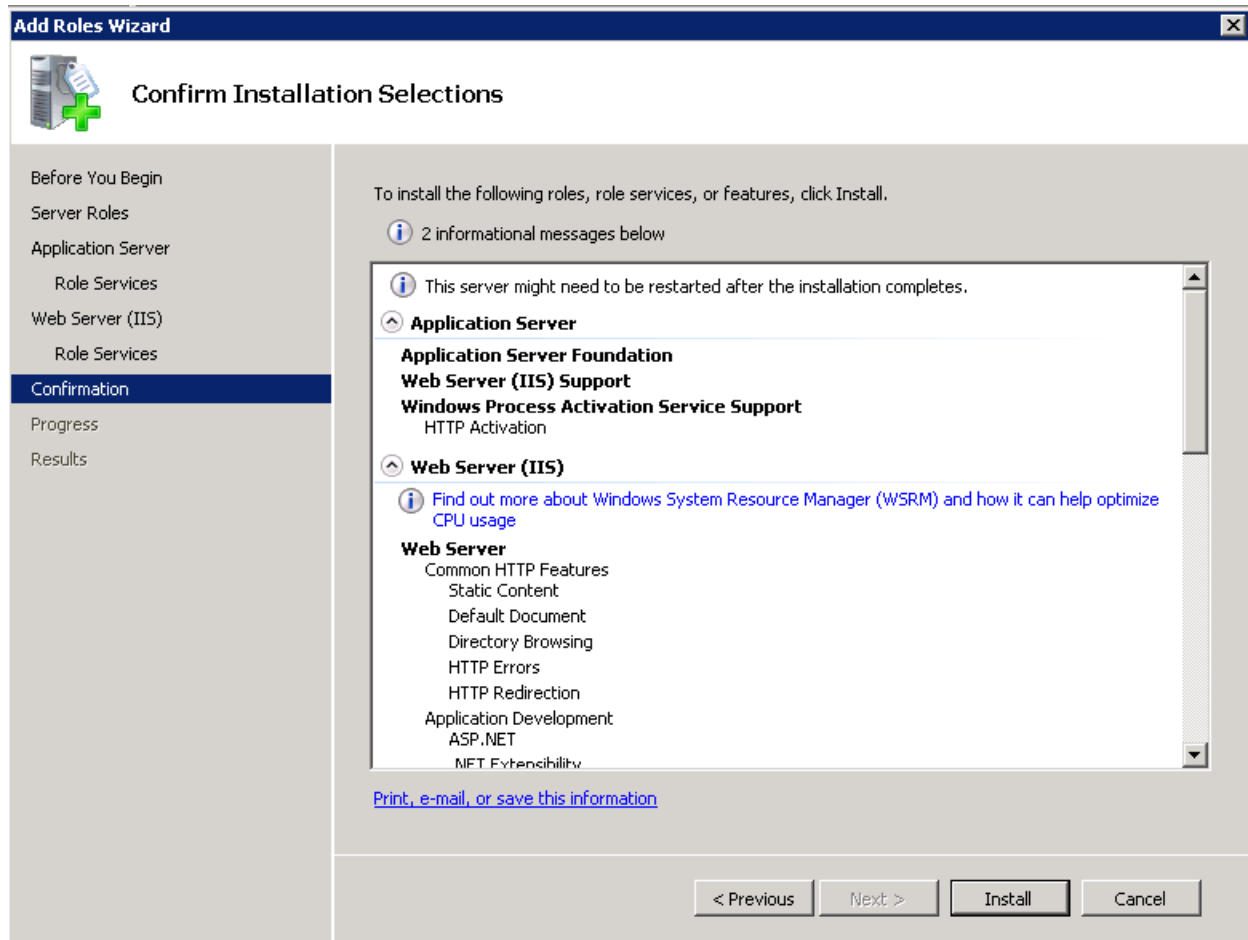


Figure 44

16. Click **Install**.

Add Roles Wizard displays the successful installation message.

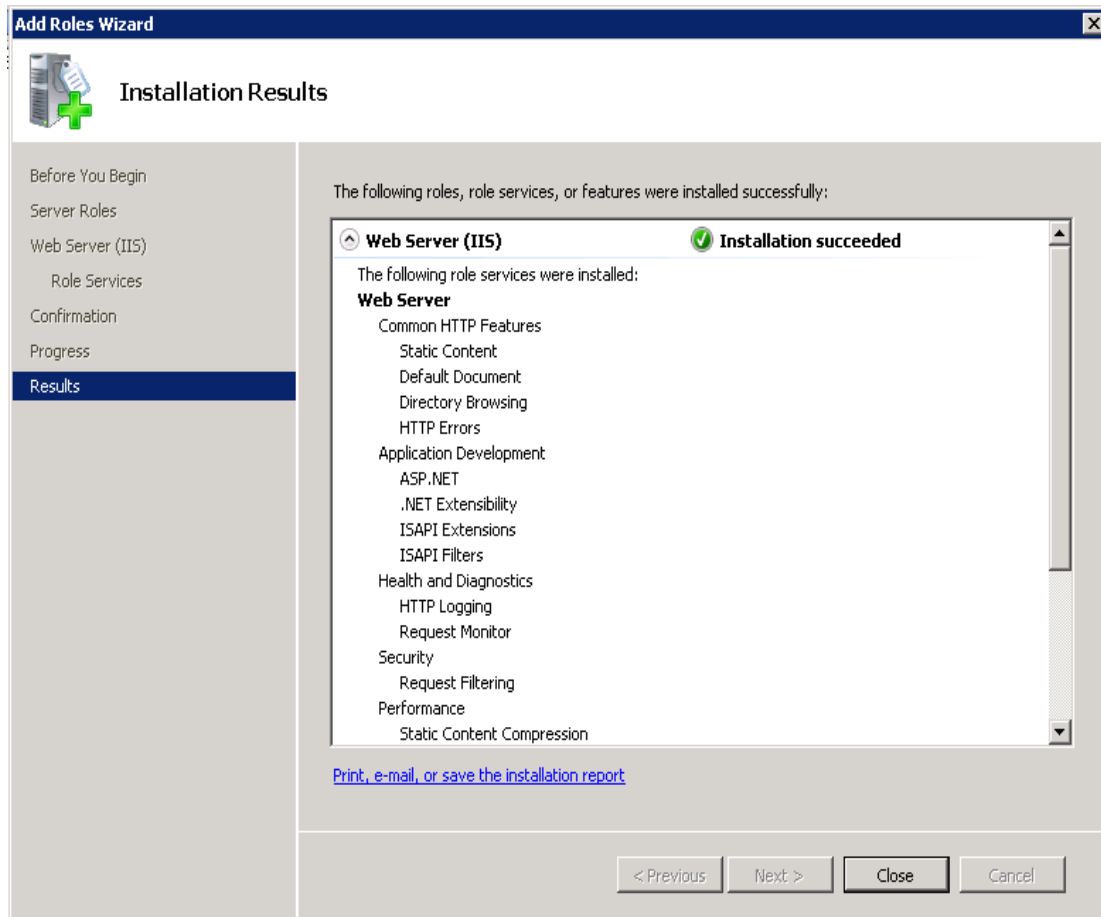


Figure 45

17. Click **Close** to close the Add Roles Wizard and then close the Server Manager.

Customize Web Server (IIS)

If the web server (IIS) is already installed, check if Application Development and IIS Management role services are installed. These role services required to install EventTracker. If not installed, do the following to add those role services.

1. Log on to Win2k8 R2 server.
2. Click the **Start button**, select **Administrative Tools**, and then select **Server Manager**.
3. Click **Roles** node, and then click **Add Role Services** on the **Role Services** pane.

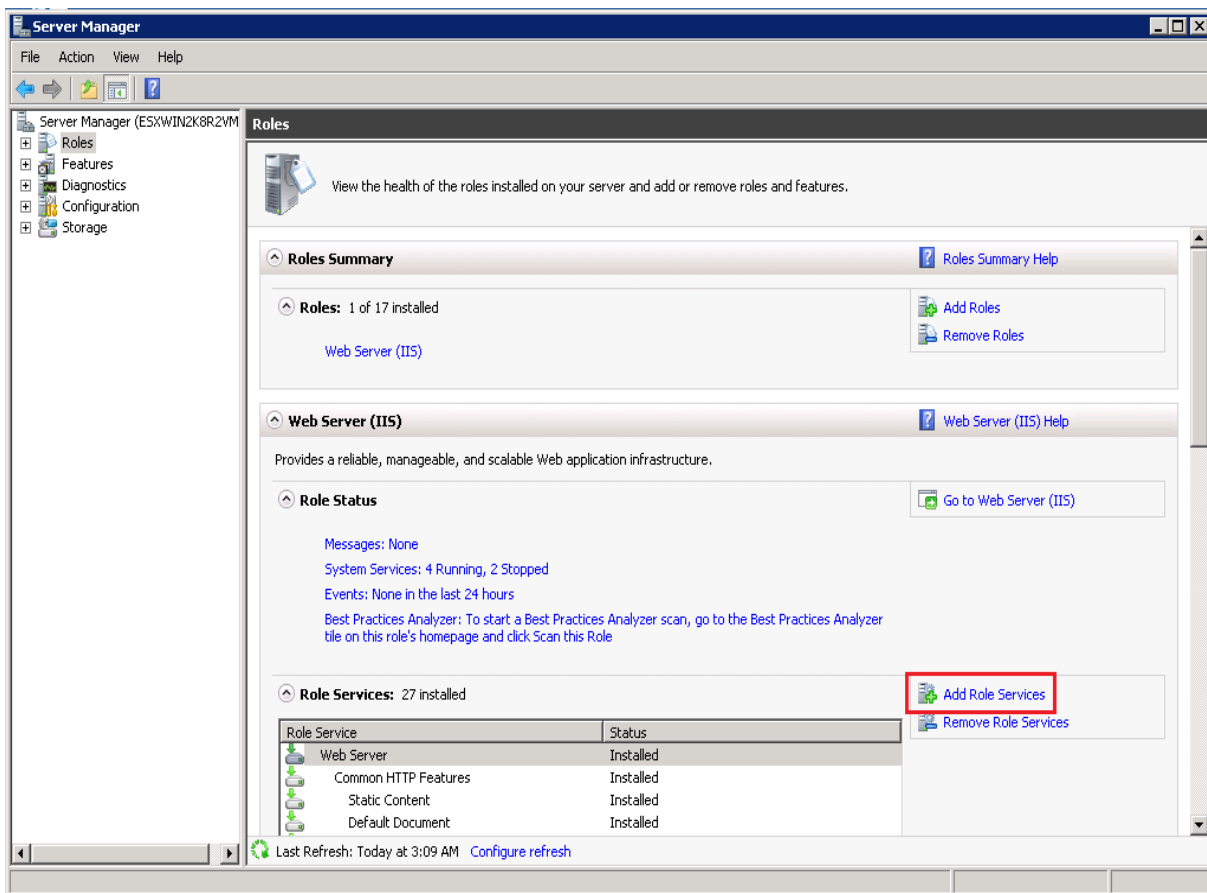


Figure 46

Follow the steps 9 to 16 mentioned in the previous section of [Install Web Server \(IIS\)](#) for 2K8, 2K8 R2.

Install .NET 3.5 SP1

This service pack essential to install EventTracker.

1. Open the Server Manager.
2. Click **Features** on the left pane.
3. Click **Add Features** on the Features Summary pane.

Add Feature Wizard displays.

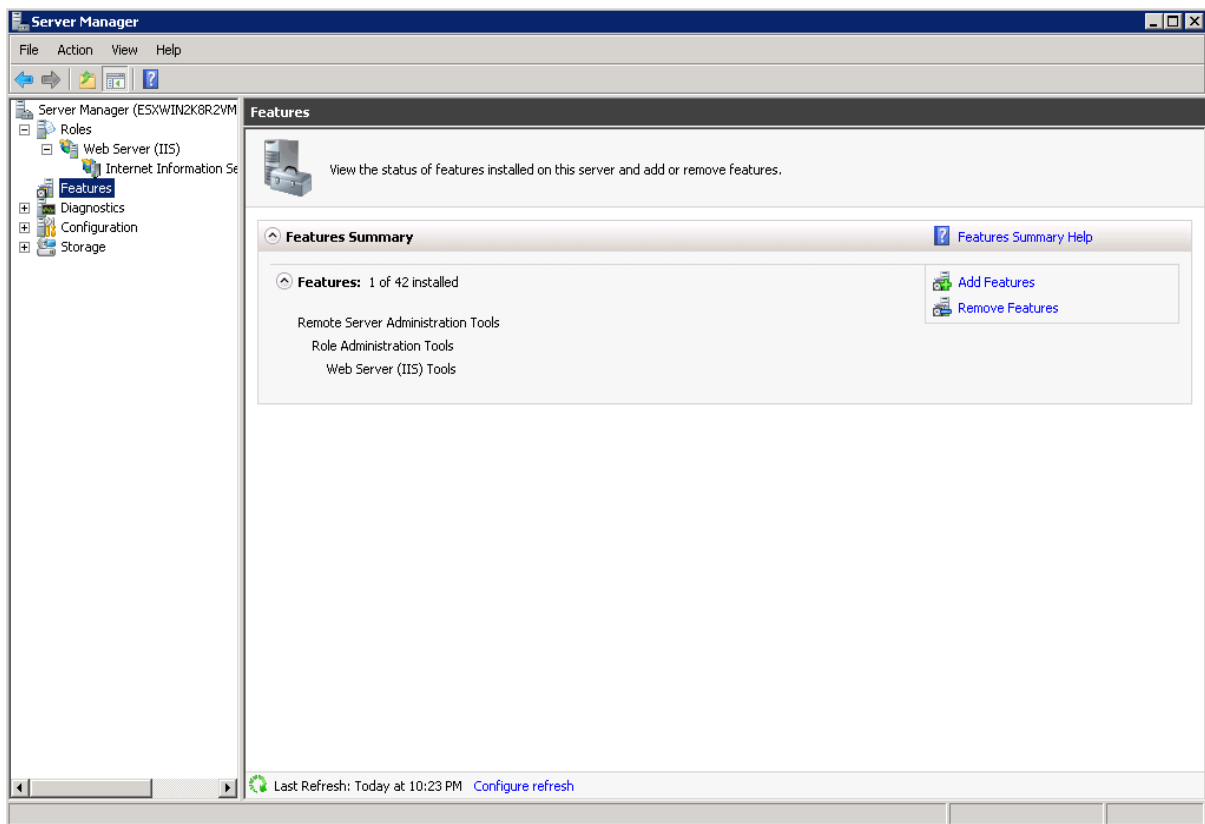


Figure 47

4. Expand **.NET Framework 3.5.1 Features**, and then select **.NET Framework 3.5.1** option.

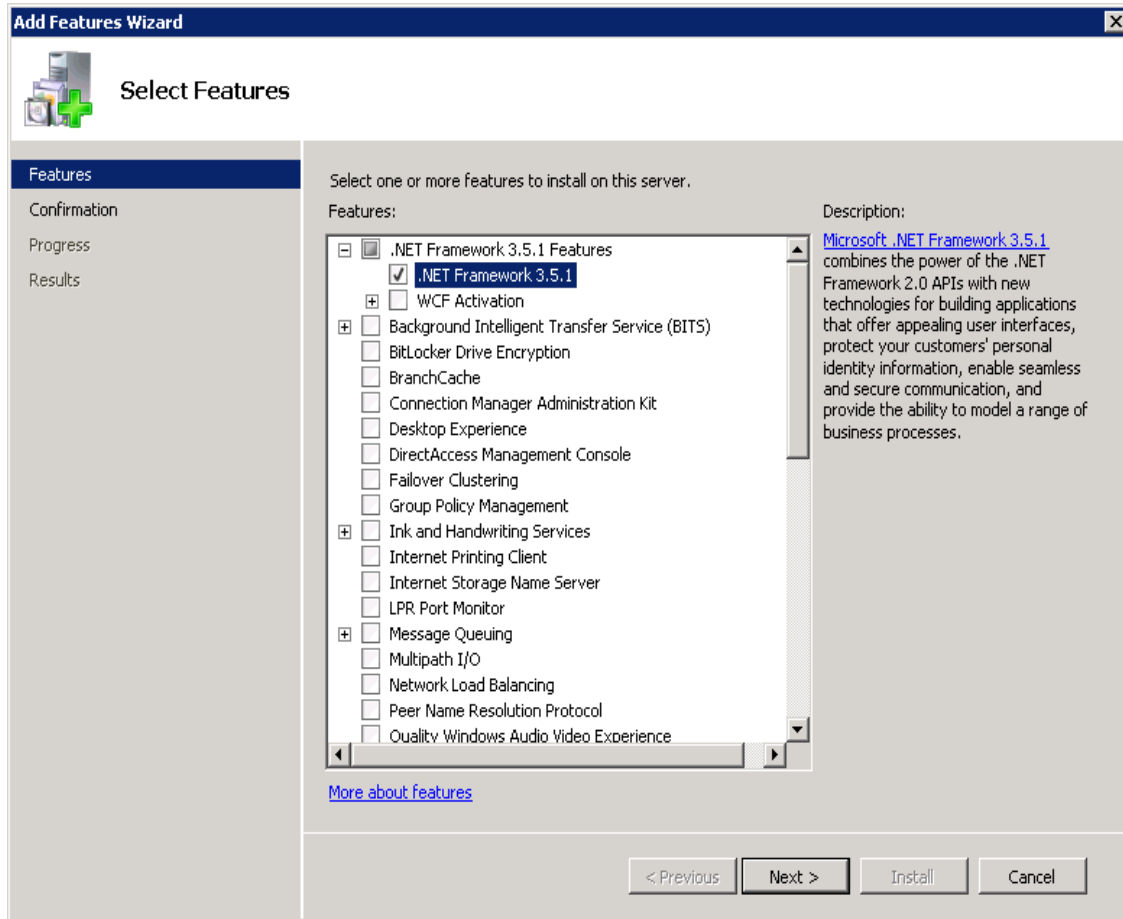


Figure 48

5. Click **Next >**

Add Features Wizard displays the Confirm Installation Selections window.

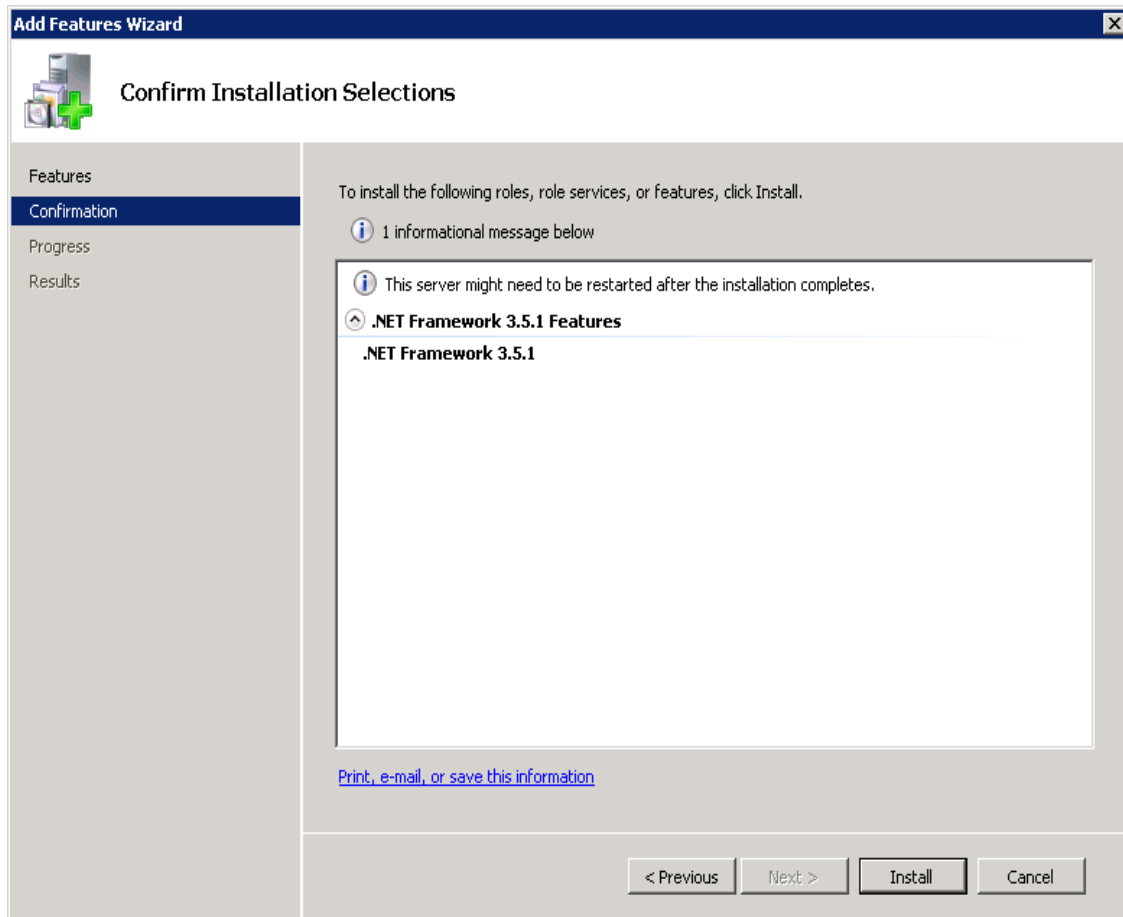


Figure 49

6. Click **Install**.

Add Features Wizard displays the successful installation message.

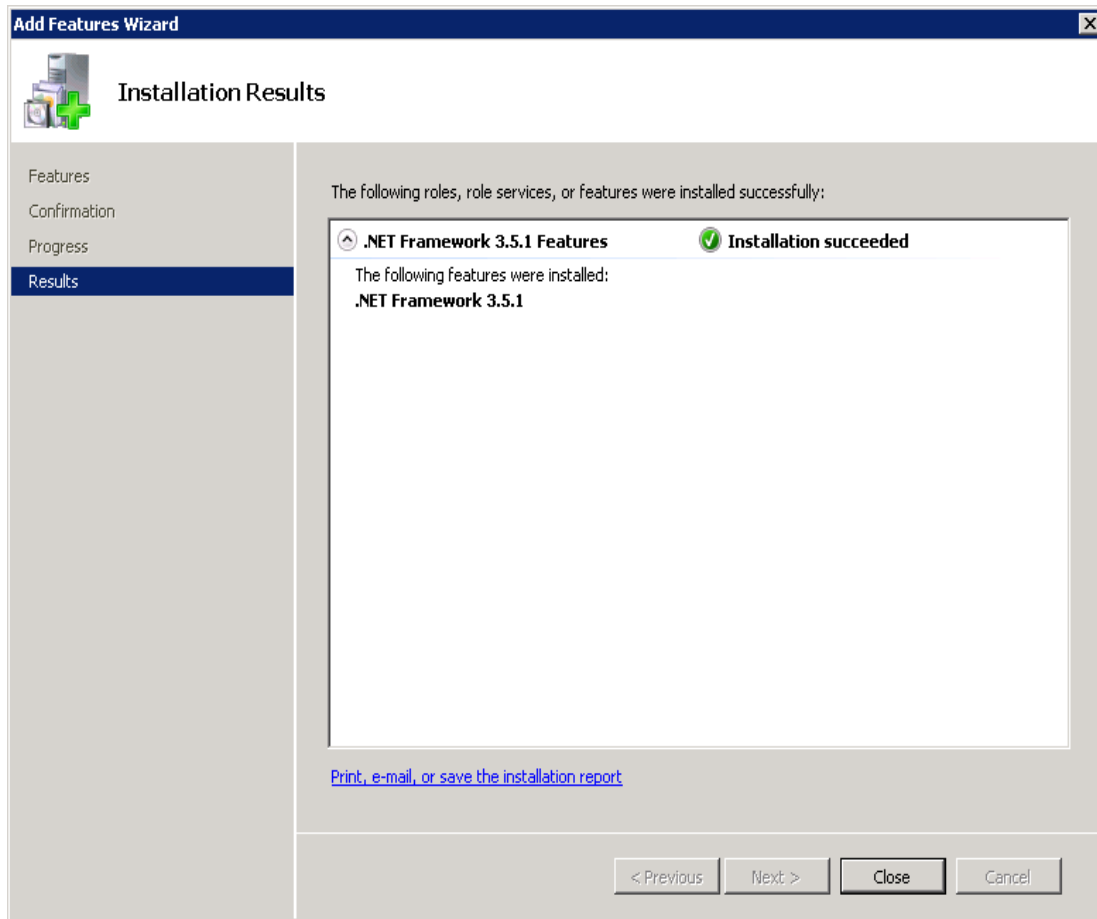


Figure 50

7. Click **Close**, and then close the Server Manager.

Windows 7 and Vista

Install and customize Web Server (IIS)

All features are not turned on while installing web server (IIS) on Windows 7. You need to manually turn on the features that essential for EventTracker to work properly, while installing web server (IIS). If web server (IIS) is already installed on Windows 7 system, check if the essential features are turned on. If not, do the following.

This section helps to install and turn on features in the Web Server (IIS) that is required for EventTracker.

1. Log on to Windows 7 or Vista system(s) where you want to install EventTracker.
2. Select the **Start button**, select **Control Panel**, and then select **Programs and Features**.

Programs and Features window displays.

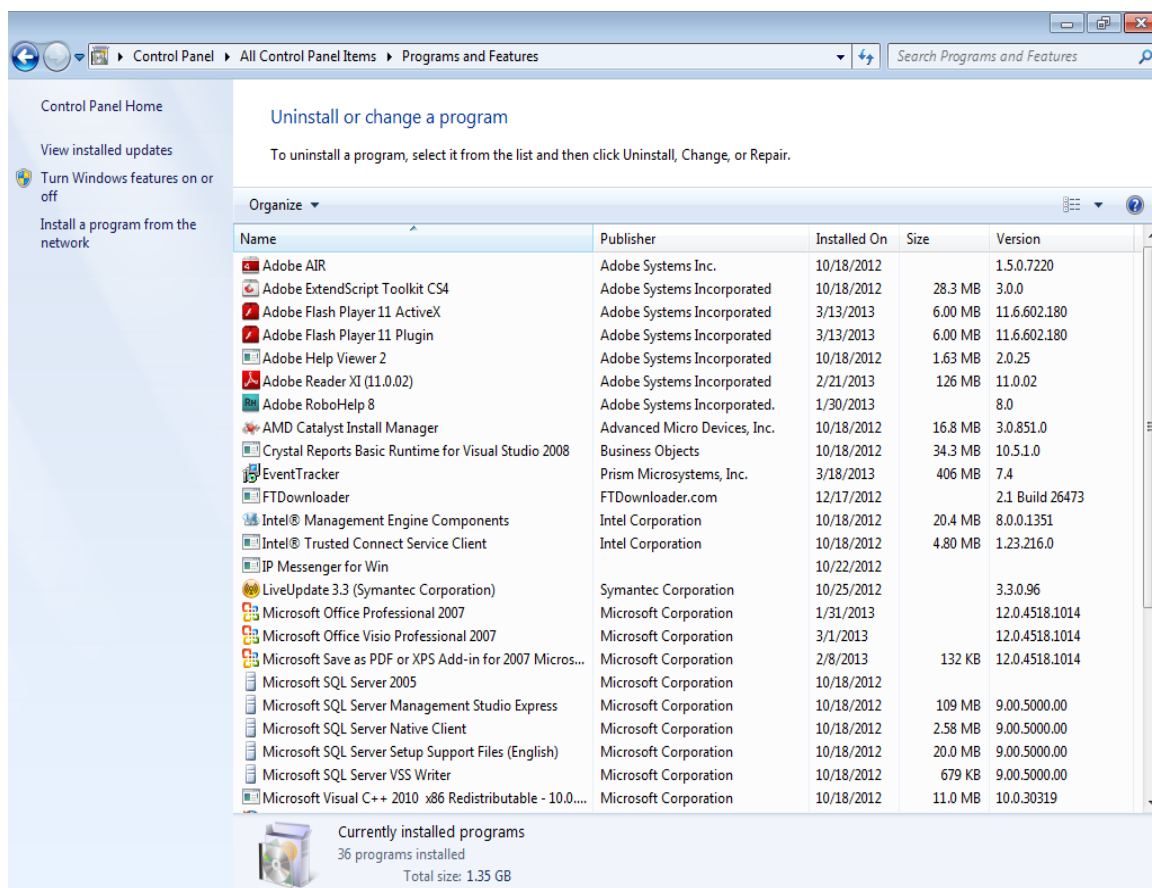


Figure 51

3. Click **Turn Windows features on or off** on the left pane.

Windows Features window displays.

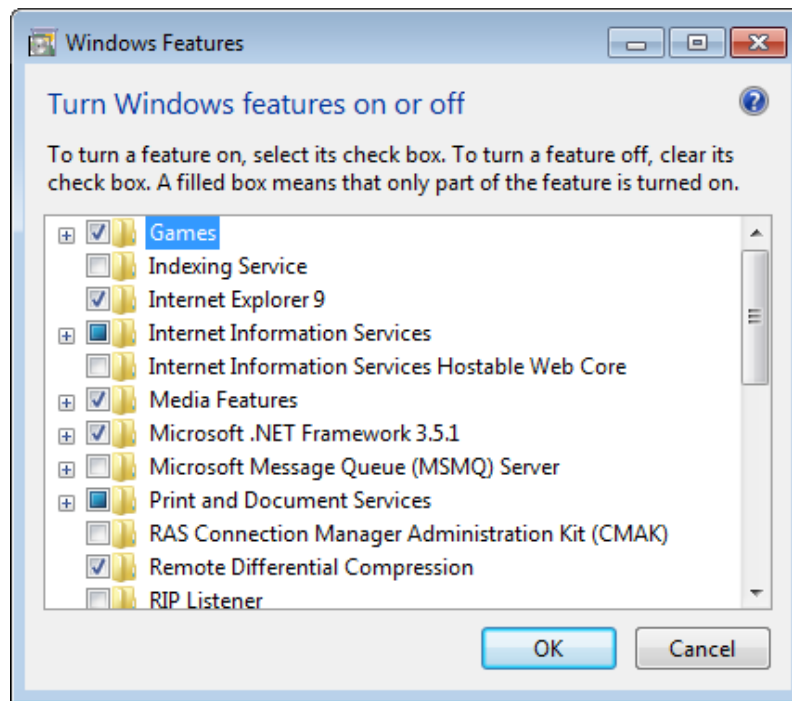


Figure 52

4. Expand **Internet Information Services** and then select **Web Management Tools**.

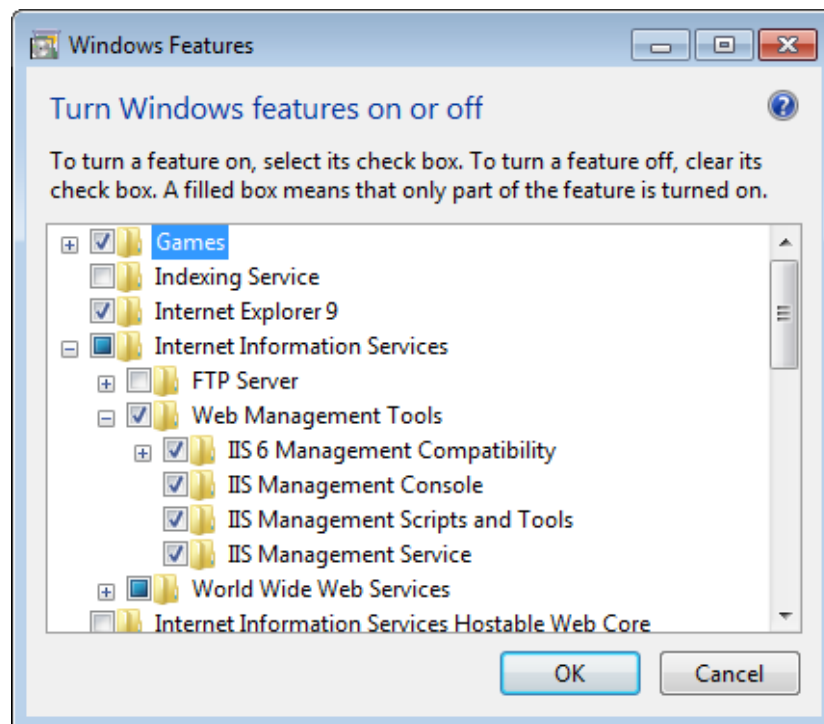


Figure 53

Expand “IIS6 Management compatibility” and select all the features.

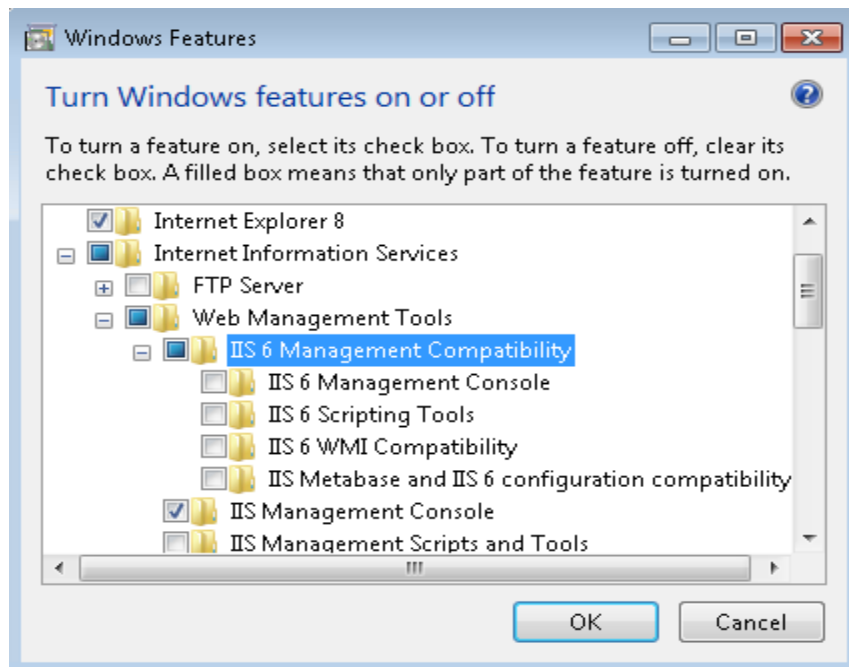


Figure 54

5. Select the all features of **Web Management Tools**, if it is not selected.
6. In **Internet Information Services** node, select **World Wide Web Services**, and then select **Application Development Features**.

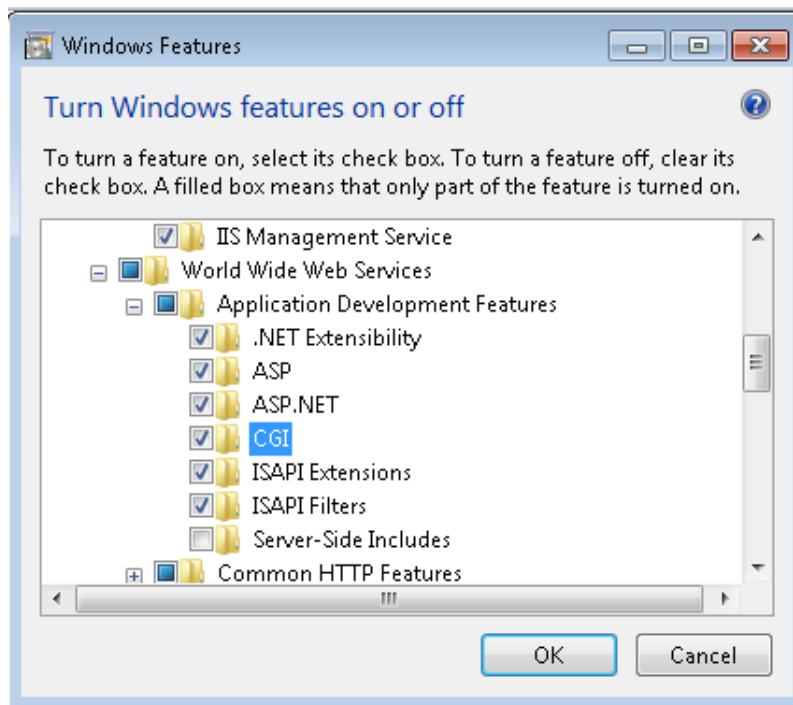


Figure 55

7. Select the following features **.NET Extensibility, ASP.NET, CGI, ISAPI Extensions, ISAPI Filters** etc if it is not selected.
8. In **Performance Features**, select **Static Content Compression**.

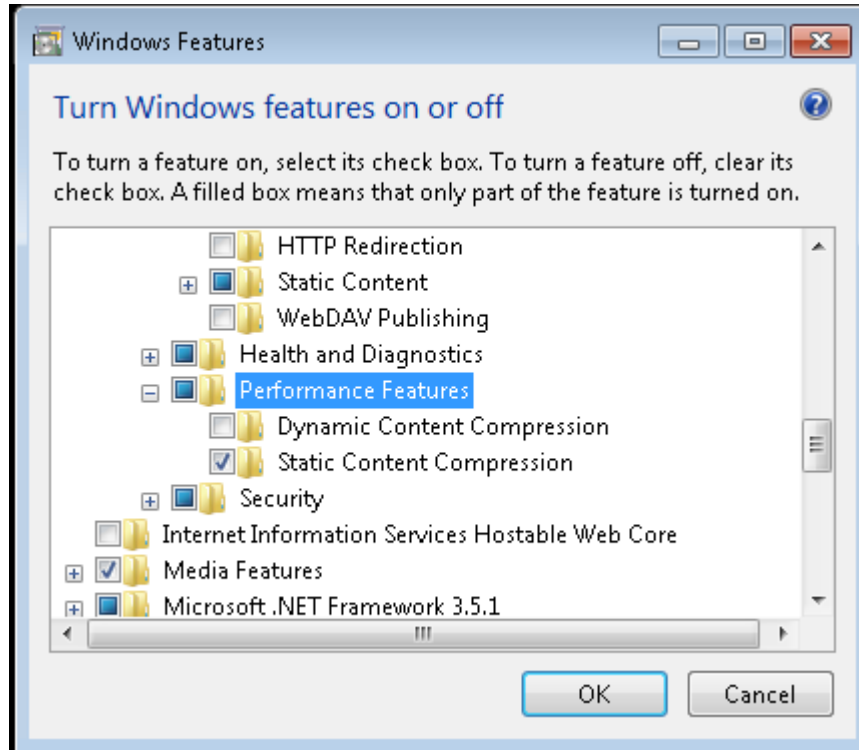


Figure 56

9. Select the **OK** button.
A message displays stating that installation is in progress status.

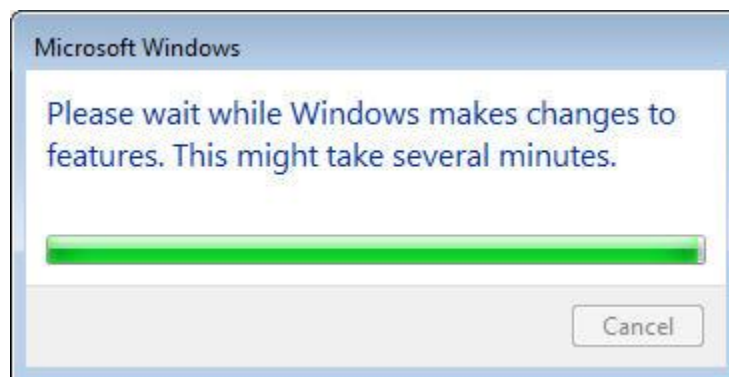


Figure 57

NOTE: In Windows 7, install.NET using .exe file.

IIS Settings in Windows 2008 / 2008 R2 / 2012 / 2012 R2

Please ensure that IIS Settings under Application Pools are as follows in Windows 2008/2008 R2/2012/2012 R2.

1. Open Internet Information Services (IIS) Manager.
2. Select **Application Pools** node, select **Classic .Net AppPool**, and then select **Advanced Settings....**
3. In **(General)** pane, select **.NET Framework Version** as **v2.0**.
4. In **Process Model** pane, select **Identity** as **NetworkService** and then click **Apply**.

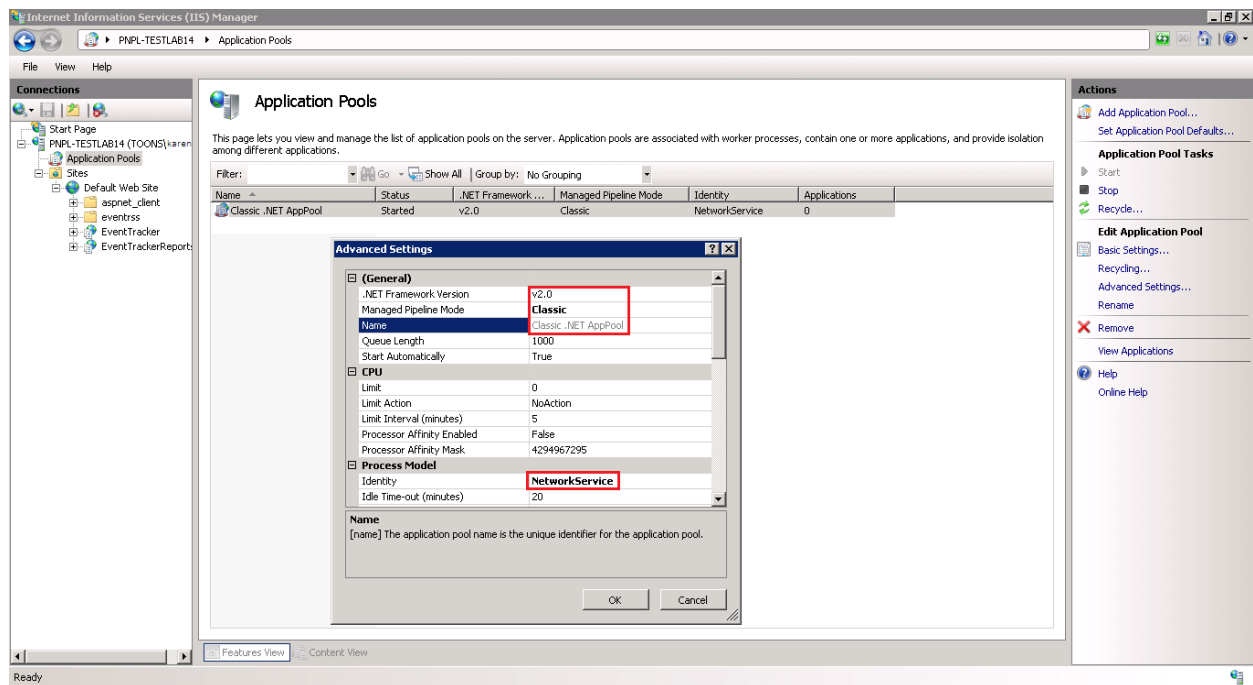


Figure 58 – On 32-bit OS

In 64-bit OS, **enable 32-Bit Applications** must be set to **True**. Please refer Figure 52.

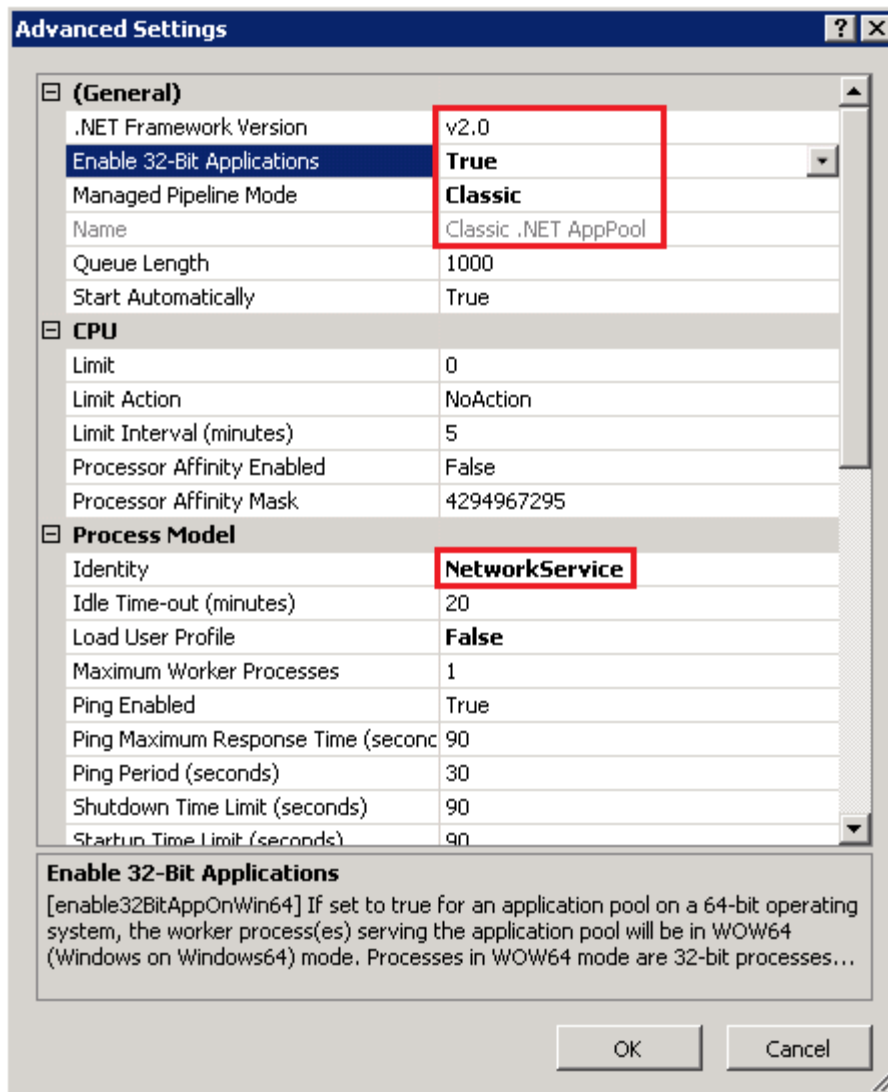


Figure 59 – On 64-bit OS

NOTE: For the customers using EventTracker v7.6, make sure that you select .NET Framework version 4.0.