

Integrating Dell OpenManage

EventTracker

Publication Date: April 29, 2013

EventTracker
8815 Centre Park Drive
Columbia MD 21045
www.eventtracker.com

About this guide

This guide helps you in configuring **Dell OMSA** and EventTracker to receive Dell OMSA events. You will find the detailed procedures required for monitoring Dell OMSA.

Intended audience

Administrators who are assigned the task to monitor and manage events using EventTracker.

Scope

The configurations detailed in this guide are consistent with EventTracker Enterprise version 7.X and later, and Dell OMSA 6.5 and later.

The information contained in this document represents the current view of Prism Microsystems Inc. on the issues discussed as of the date of publication. Because Prism Microsystems must respond to changing market conditions, it should not be interpreted to be a commitment on the part of Prism Microsystems, and Prism Microsystems cannot guarantee the accuracy of any information presented after the date of publication.

This document is for informational purposes only. Prism Microsystems MAKES NO WARRANTIES, EXPRESS OR IMPLIED, AS TO THE INFORMATION IN THIS DOCUMENT.

Complying with all applicable copyright laws is the responsibility of the user. Without limiting the rights under copyright, this paper may be freely distributed without permission from Prism, as long as its content is unaltered, nothing is added to the content and credit to Prism is provided.

Prism Microsystems may have patents, patent applications, trademarks, copyrights, or other intellectual property rights covering subject matter in this document. Except as expressly provided in any written license agreement from Prism Microsystems, the furnishing of this document does not give you any license to these patents, trademarks, copyrights, or other intellectual property.

The example companies, organizations, products, people and events depicted herein are fictitious. No association with any real company, organization, product, person or event is intended or should be inferred.

© 2013 Prism Microsystems Corporation. All rights reserved. The names of actual companies and products mentioned herein may be the trademarks of their respective owners.

Table of Contents

- About this guide 1
 - Purpose of this guide..... 1
 - Intended audience..... 1
 - Scope 1
- Dell OpenManage..... 2
 - Overview..... 3
- Pre-requisite..... 3
- Configure Dell OpenManage to forward all the logs to EventTracker 3
- EventTracker Knowledge Pack..... 5
- Import Dell OpenManage - Knowledge pack into EventTracker:..... 10
 - To import Category..... 11
 - To import Alerts..... 12
- Verify Dell OpenManage Knowledge pack in EventTracker:..... 13
 - Verify Dell OpenManage categories 13
 - Verify Dell OpenManage alerts 14

Dell OpenManage

The Dell OpenManage Server Administrator (OMSA) provides a comprehensive, one-to-one systems management solution in two ways: from an integrated, web browser-based graphical user interface (GUI) and from a command line interface (CLI) through the operating system. Server Administrator is designed for system administrators to manage systems locally and remotely on a network. It allows system administrators to focus on managing their entire network by providing comprehensive one-to-one systems management.

Overview

To monitor Dell OpenManage in EventTracker, configure Dell OpenManage to send all events as Syslog to the EventTracker system.

Pre-requisite

- EventTracker should be installed.
- Dell OpenManage should be installed on server 2008 or later (OR)
- Dell OpenManage should be installed on Linux Server.

Configure Dell OpenManage to forward all the logs to EventTracker

Dell OpenManage in Windows server

1. Install EventTracker agent on server where dell openmanage is installed.

Dell OpenManage in Linux server to send logs to EventTracker

1. Open and edit file `/etc/syslog.conf` in VI Editor.
2. Add following line at last.

. @10.0.0.3:514 NOTE: Here IP address is EventTracker machine's IP.

3. Press Esc key and enter `:wq` to save the file.
4. Restart the syslog service.

```
# /etc/init.d/syslog
```

EventTracker Knowledge Pack

Once Dell OMSA events are enabled and Dell OMSA events are received in EventTracker, Alerts and Reports can be configured in EventTracker.

The following Knowledge Packs are available in EventTracker to support Dell OMSA monitoring

Categories

- **Dell OMSA: All events-** This category based report provides information related to all events of Dell OpenManage Server Administrator.
- **Dell OMSA: Array disk error-** This category based report provides information related to array disk error.
- **Dell OMSA: Automatic system recovery-** This category based report provides information related to automatic system recovery.
- **Dell OMSA: Battery sensor-** This category based report provides information related to battery sensor.

- **Dell OMSA: BIOS update schedule-** This category based report provides information related to BIOS update schedule.
- **Dell OMSA: Chassis intrusion-** This category based report provides information related to chassis intrusion.
- **Dell OMSA: Chassis management controller-** This category based report provides information related to chassis management controller.
- **Dell OMSA: Cooling device-** This category based report provides information related to cooling device.
- **Dell OMSA: Current sensor-** This category based report provides information related to current sensor.
- **Dell OMSA: Disk error-** This category based report provides information related to disk error.
- **Dell OMSA: Enclosure-** This category based report provides information related to enclosure.
- **Dell OMSA: Firmware-** This category based report provides information related to Firmware.
- **Dell OMSA: Hardware log sensor-** This category based report provides information related to hardware log sensor.
- **Dell OMSA: Log backup and clear-** This category based report provides information related to log backup and clear.
- **Dell OMSA: Memory device-** This category based report provides information related to memory device
- **Dell OMSA: Physical disk-** This category based report provides information related to physical disk.
- **Dell OMSA: Pluggable device-** This category based report provides information related to pluggable device.

- **Dell OMSA: Power cord-** This category based report provides information related to power cord.
- **Dell OMSA: Power supply-** This category based report provides information related to power supply.
- **Dell OMSA: Processor sensor-** This category based report provides information related to processor sensor.
- **Dell OMSA: RAID and SCSI controller error-** This category based report provides information related to RAID and SCSI controller error.
- **Dell OMSA: Redundancy unit-** This category based report provides information related to redundancy unit.
- **Dell OMSA: Server administrator status-** This category based report provides information related to server administrator status.
- **Dell OMSA: Temperature sensor-** This category based report provides information related to temperature sensor.
- **Dell OMSA: Virtual disk-** This category based report provides information related to Virtual disk.
- **Dell OMSA: Voltage sensor-** This category based report provides information related to voltage sensor.

Alerts


- **DELL OMSA: Chasis intrusion alert-** This alert is generated when chasis intrusion.
- **DELL OMSA: Chassis management controller alert-** This alert is generated when chassis management controller.
- **DELL OMSA: Device added or removed alert-** This alert is generated when device added or removed.
- **DELL OMSA: Memory device error alert-** This alert is generated when memory device error.

- **DELL OMSA: Pluggable device configuration error-** This alert is generated when
- **DELL OMSA: Power supply failure alert-** This alert is generated when power supply failure.
- **DELL OMSA: Processor sensor alert-** This alert is generated when processor sensor.
- **DELL OMSA: Redundancy failure alert-** This alert is generated when redundancy failure.
- **DELL OMSA: Sensor failed-** This alert is generated when sensor failed.
- **DELL OMSA: Storage management critical alert-** This alert is generated when storage management critical.
- **DELL OMSA: System battery failure-** This alert is generated when system battery failure

Import Dell OMSA knowledge pack into EventTracker

1. Launch EventTracker Control Panel.
2. Double click **Export Import Utility**, and then click **Import** tab.
Import Category/Alert/Tokens/ Flex Reports as given below.

Import Category

1. Click **Category** option, and then click the browse  button.

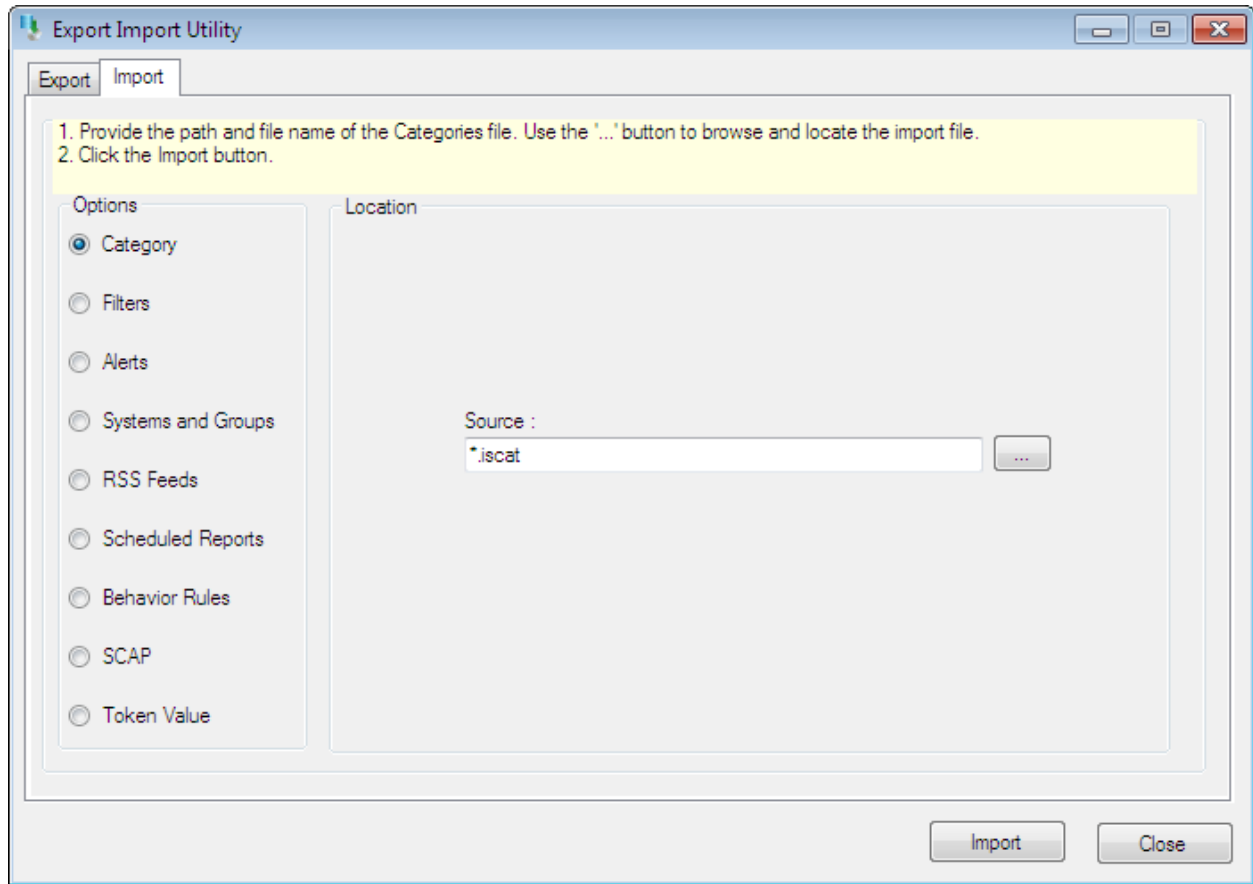


Figure 1

2. Locate All Dell OMSA group of Categories.iscat file, and then click the **Open** button.
3. To import categories, click the **Import** button.

EventTracker displays success message.

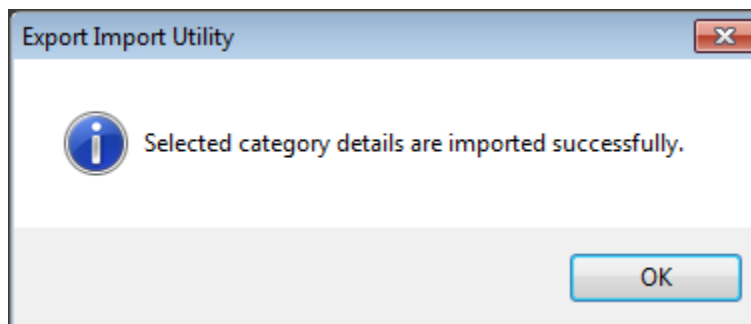



Figure 2

4. Click **OK**, and then click the **Close** button.

Import Alerts

1. Click **Alerts** option, and then click the **browse**  button.

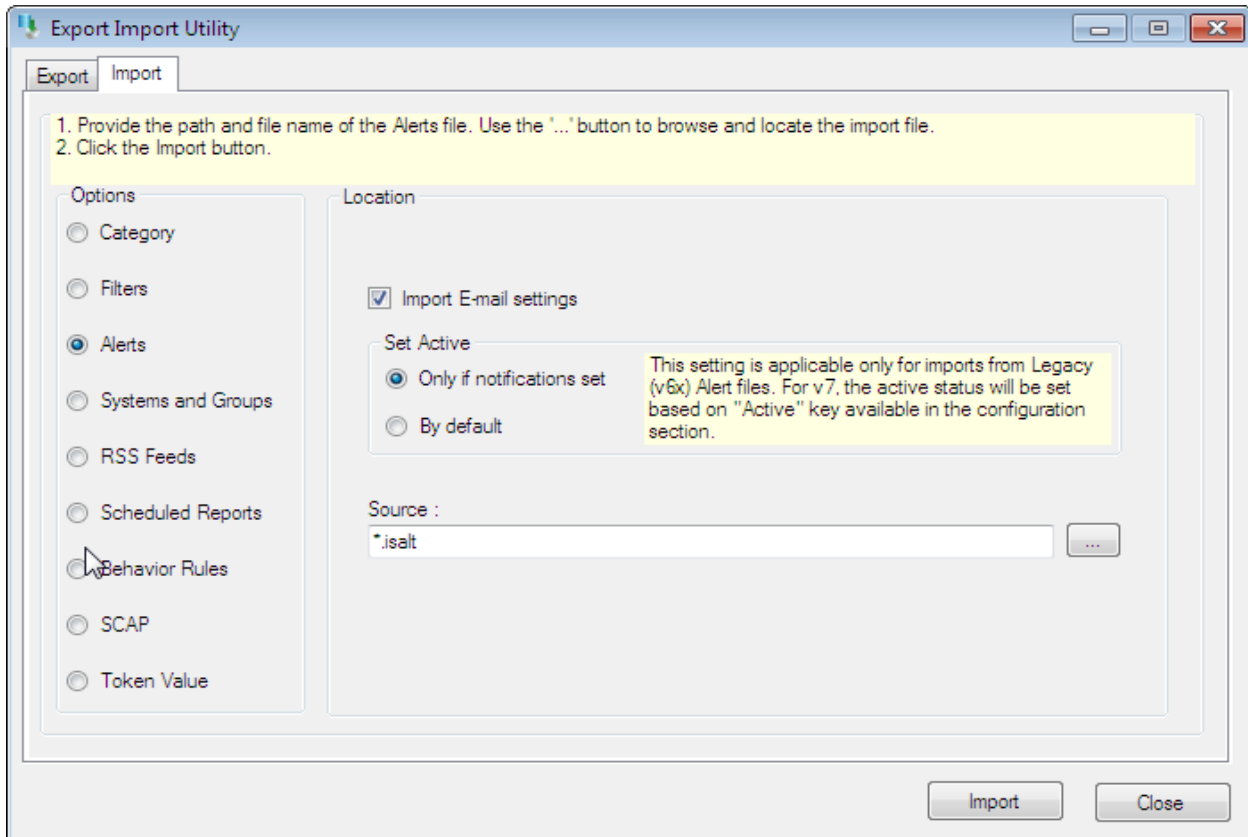


Figure 3

2. Locate All Dell OMSA group of Alerts.isalt file, and then click the **Open** button.
3. To import alerts, click the **Import** button.
EventTracker displays success message.

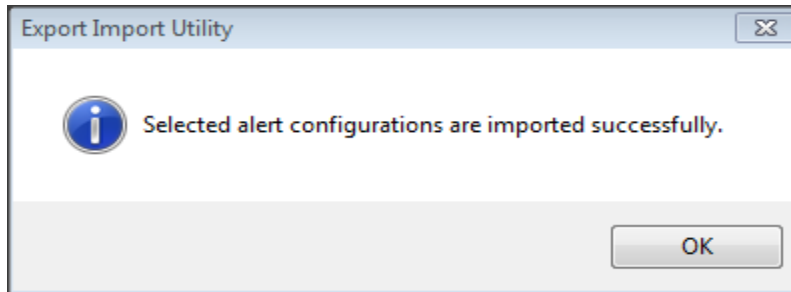


Figure 4

4. Click OK, and then click the Close button.

Verify Dell OMSA knowledge pack in EventTracker

1. Logon to EventTracker Enterprise.
2. Click the **Admin** menu, and then click **Categories**.
3. In **Category Tree** to view imported categories, scroll down and expand **Dell OMSA** group folder to view the imported categories.

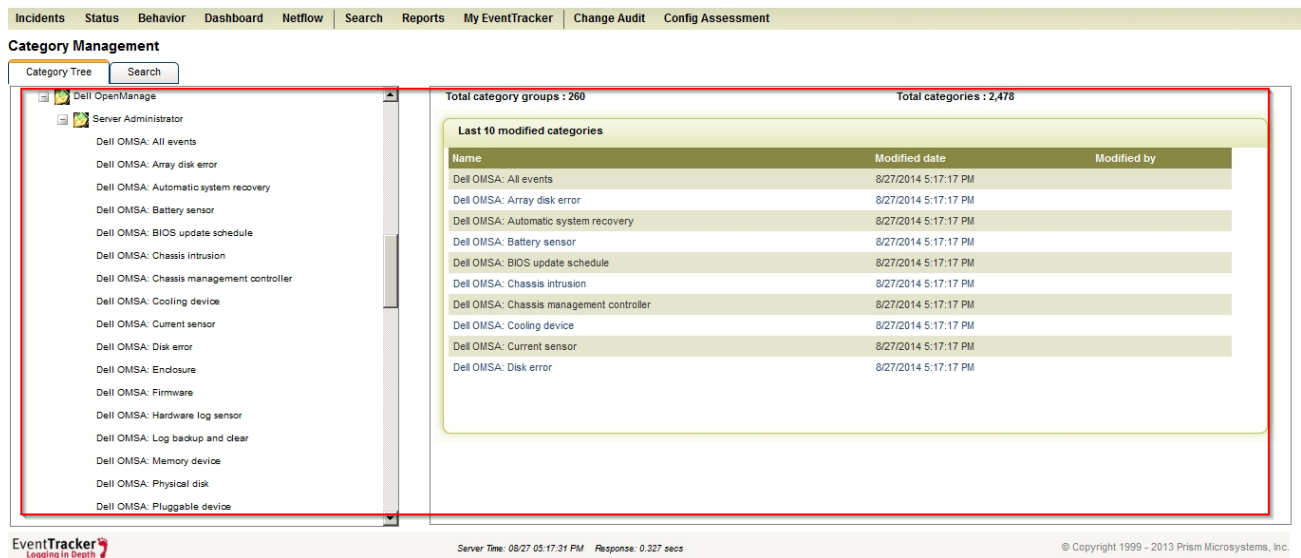


Figure 5

Verify Dell OMSA Alerts

1. Logon to EventTracker Enterprise.
 2. Click the **Admin** menu, and then click **Alerts**.
 3. In **Search** field, type 'Dell OMSA', and then click the **Go** button.
- Alert Management page will display all the imported Dell OMSA alerts.

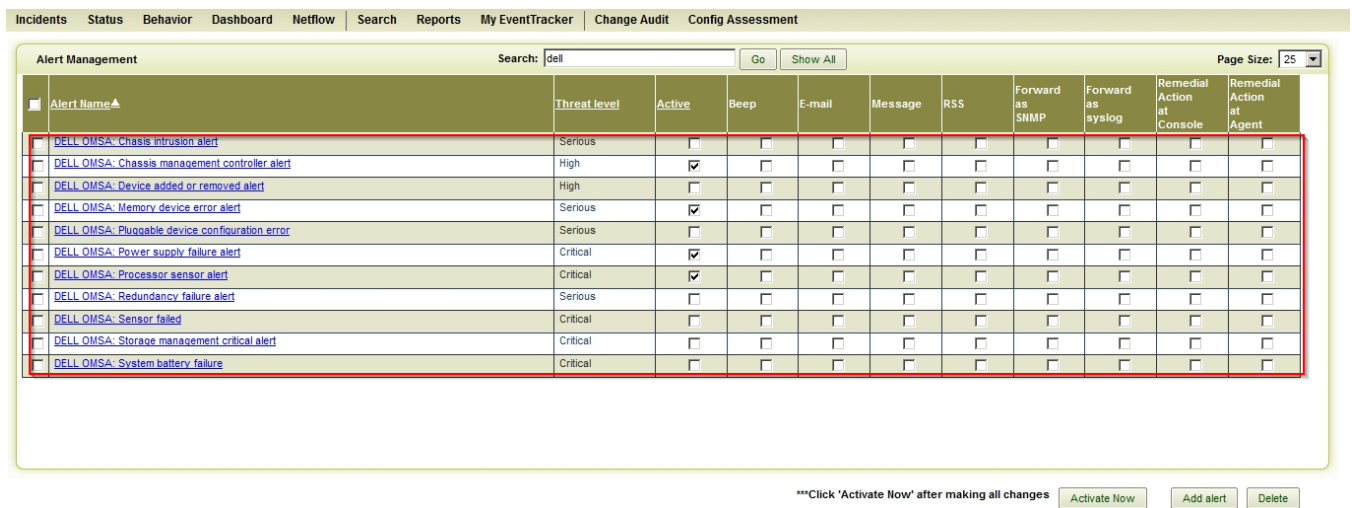


Figure 6

4. To activate the imported alerts, select the respective checkbox in the **Active** column.

EventTracker displays message box.

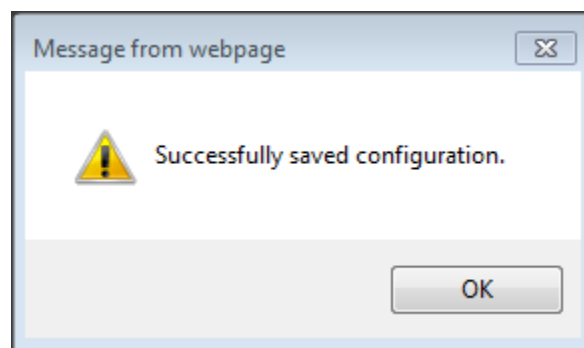


Figure 7

5. Click **OK**, and then click the **Activate Now** button.

NOTE:

You can select alert notification such as Beep, Email, and Message etc. For this, select the respective checkbox in the Alert management page, and then click the **Activate Now** button.