

Integrate Slack Enterprise Grid

EventTracker v8.x and above

Abstract

This document guides the users to integrate with Slack Enterprise Grid to monitor the activities on the Slack Enterprise Grid such as Channel events, File uploads, User events etc.

Scope

The configurations detailed in this guide are consistent with EventTracker Enterprise version 8.x and later, and Slack Enterprise Grid.

Audience

Slack Enterprise Grid users, who wish to forward Syslogs to EventTracker Manager and monitor events using Event Tracker Enterprise.

The information contained in this document represents the current view of Netsurion. on the issues discussed as of the date of publication. Because Netsurion must respond to changing market conditions, it should not be interpreted to be a commitment on the part of Netsurion, and Netsurion cannot guarantee the accuracy of any information presented after the date of publication.

This document is for informational purposes only. Netsurion MAKES NO WARRANTIES, EXPRESS OR IMPLIED, AS TO THE INFORMATION IN THIS DOCUMENT.

Complying with all applicable copyright laws is the responsibility of the user. Without limiting the rights under copyright, this paper may be freely distributed without permission from Netsurion, if its content is unaltered, nothing is added to the content and credit to Netsurion is provided.

Netsurion may have patents, patent applications, trademarks, copyrights, or other intellectual property rights covering subject matter in this document. Except as expressly provided in any written license agreement from Netsurion, the furnishing of this document does not give you any license to these patents, trademarks, copyrights, or other intellectual property.

The example companies, organizations, products, people and events depicted herein are fictitious. No association with any real company, organization, product, person or event is intended or should be inferred.

© 2019 Netsurion. All rights reserved. The names of actual companies and products mentioned herein may be the trademarks of their respective owners.

Table of Contents

| | |
|--|----|
| Abstract | 1 |
| Scope | 1 |
| Audience..... | 1 |
| Introduction..... | 3 |
| Prerequisite | 3 |
| Configure to forward logs to EventTracker | 3 |
| Integrate Slack Enterprise Grid | 3 |
| Create an App on Slack Enterprise Grid | 4 |
| EventTracker Knowledge Pack | 7 |
| Knowledge Object | 7 |
| Categories..... | 8 |
| Reports | 8 |
| Dashboards..... | 10 |
| Import Slack Enterprise Grid knowledge pack into EventTracker..... | 13 |
| Category | 13 |
| Token Templates | 14 |
| Knowledge Objects..... | 15 |
| Flex Reports | 16 |
| Verify Slack Enterprise Grid Knowledge Pack in EventTracker | 18 |
| Categories..... | 18 |
| Token Templates | 19 |
| Knowledge Objects..... | 19 |
| Flex Reports | 20 |

Introduction

Slack Enterprise Grid is a collaboration hub where you and your team can work together to get things done. In Slack, work happens in channels. We can monitor the audit events in Slack Enterprise Grid.

EventTracker integrates with Slack Enterprise Grid to monitor the activities on the Slack Enterprise Grid such as Channel events, File uploads, User events etc.

Prerequisite

- Admin Privileges on Slack.
- Agent should be installed on the system.
- <https://api.slack.com/audit/v1/> should be allowed in the firewall.
- Port number **14505** should be allowed.
- PowerShell Version 4.0 and later should be installed.

Configure to forward logs to EventTracker

Integrate Slack Enterprise Grid

- Locate the **Slack Enterprise Grid Integrator.exe** and run as **Admin**.
- Fill the Client ID, API key, Redirect URL, Authorization URL, using the [steps mentioned below](#).
- Provide your Organization name and the Group name.
- Click **Next**.

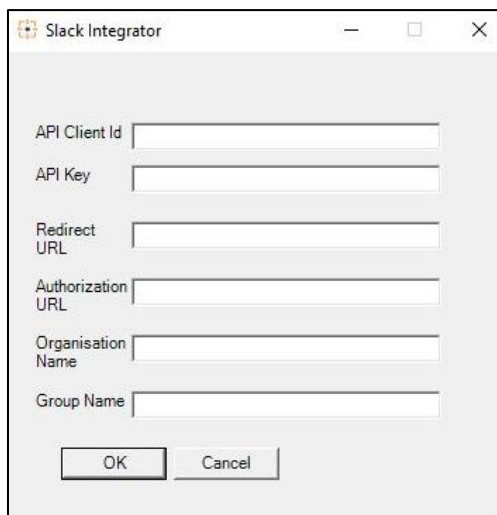
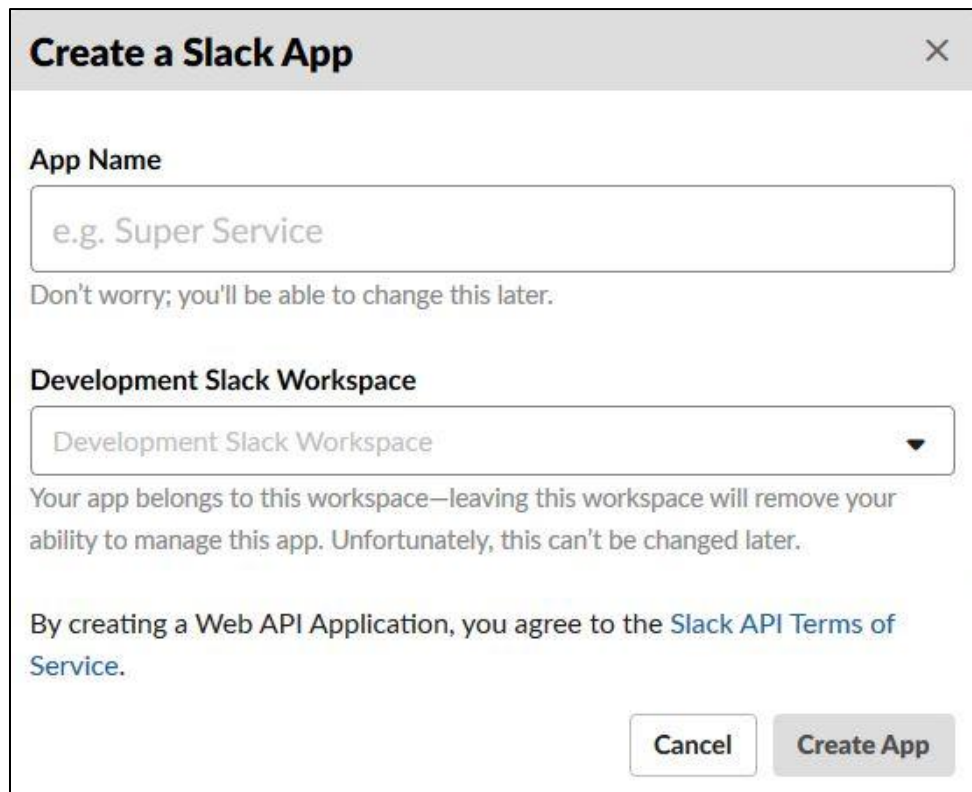
A screenshot of a Windows-style dialog box titled "Slack Integrator". The dialog box has a light gray background and a standard Windows title bar with minimize, maximize, and close buttons. Inside the dialog, there are six text input fields arranged vertically, each with a label to its left: "API Client Id", "API Key", "Redirect URL", "Authorization URL", "Organisation Name", and "Group Name". At the bottom of the dialog, there are two buttons: "OK" and "Cancel".

Figure 1

Create an App on Slack Enterprise Grid

- Login in into the Slack Enterprise Grid as an administrator.
- We need to create an app on Slack Enterprise Grid for fetching logs. We can do the same by clicking the link: [Create a new app](#)
- Click on **Create New App**.



Create a Slack App [X]

App Name
e.g. Super Service
Don't worry; you'll be able to change this later.

Development Slack Workspace
Development Slack Workspace [v]
Your app belongs to this workspace—leaving this workspace will remove your ability to manage this app. Unfortunately, this can't be changed later.

By creating a Web API Application, you agree to the [Slack API Terms of Service](#).

Cancel Create App

Figure 2

- Provide an **App Name** and select the **Development Slack Workspace** and click **Create App**.
- Under **Basic Information** you will find **Client ID** and **Client Secret**, enter the same in the Client ID and Client Key field in the Integrator respectively.

Settings

- Basic Information**
- Collaborators
- Install App
- Manage Distribution

Features

- Incoming Webhooks
- Interactive Components
- Slash Commands
- OAuth & Permissions
- Event Subscriptions
- Bot Users
- User ID Translation

[App Directory Page](#)

Slack ♥

[Help](#)

[Contact](#)

[Policies](#)

[Our Blog](#)

Building Apps for Slack

Create an app that's just for your workspace (or build one that can be used by any workspace) by following the steps below.

- Add features and functionality** ✓ ▶
- Install your app to your workspace** ▶
- Manage distribution** ✓ ▶

App Credentials

These credentials allow your app to access the Slack API. They are secret. Please don't share your app credentials with anyone, include them in public code repositories, or store them in insecure ways.

App ID
AG0K13UCA

Date of App Creation
February 7, 2019

Client ID
532106281378.544647130418

Client Secret
•••••••• [Show](#) [Regenerate](#)

You'll need to send this secret along with your client ID when making your oauth.access request.

Figure 3

- Under **Manage Distribution**, complete the necessary configuration to enable the Activate Public Distributions.

Collaborators

- Manage Distribution**
- Install App

Features

- Incoming Webhooks
- Interactive Components
- Slash Commands
- OAuth & Permissions
- Event Subscriptions
- Bot Users
- User ID Translation

Slack ♥

[Help](#)

[Contact](#)

[Policies](#)

[Our Blog](#)

You can use the URL and the **Add to Slack** button below to share your app with the KP_TEAM workspace. Activate distribution (below) to share your app with any workspace.

ⓘ You need to add features or permission scopes to generate your Slack Button or sharable URL.

Share Your App with Other Workspaces

Activate app distribution to allow others to install your app, and to view the steps to submit your app to the [Slack App Directory](#).

Before activating distribution, please complete the steps listed below.

- Enable Features & Functionality** ▶
- Add OAuth Redirect URLs** ▶
- Remove Hard Coded Information** ▶
- Use HTTPS For Your Features** ✓ ▶

Activate Public Distribution

Figure 4

- Under **Oauth & Permissions**, set Redirect URL to <https://localhost> and Scope to **auditlogs:read**.

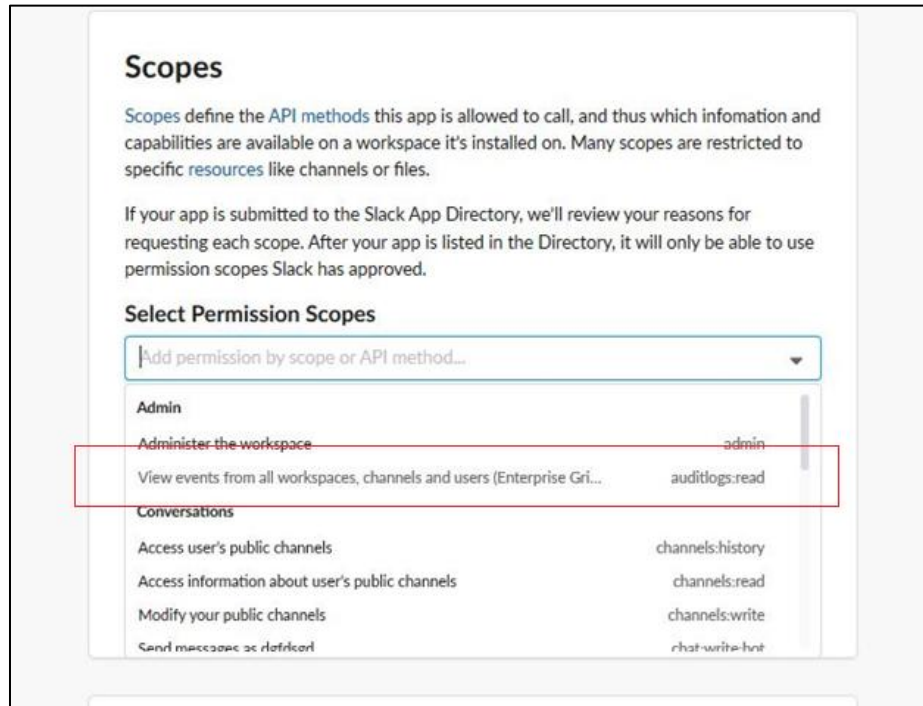


Figure 5

- Paste the same Redirect URL in the Integrator in the field **Redirect URL**.

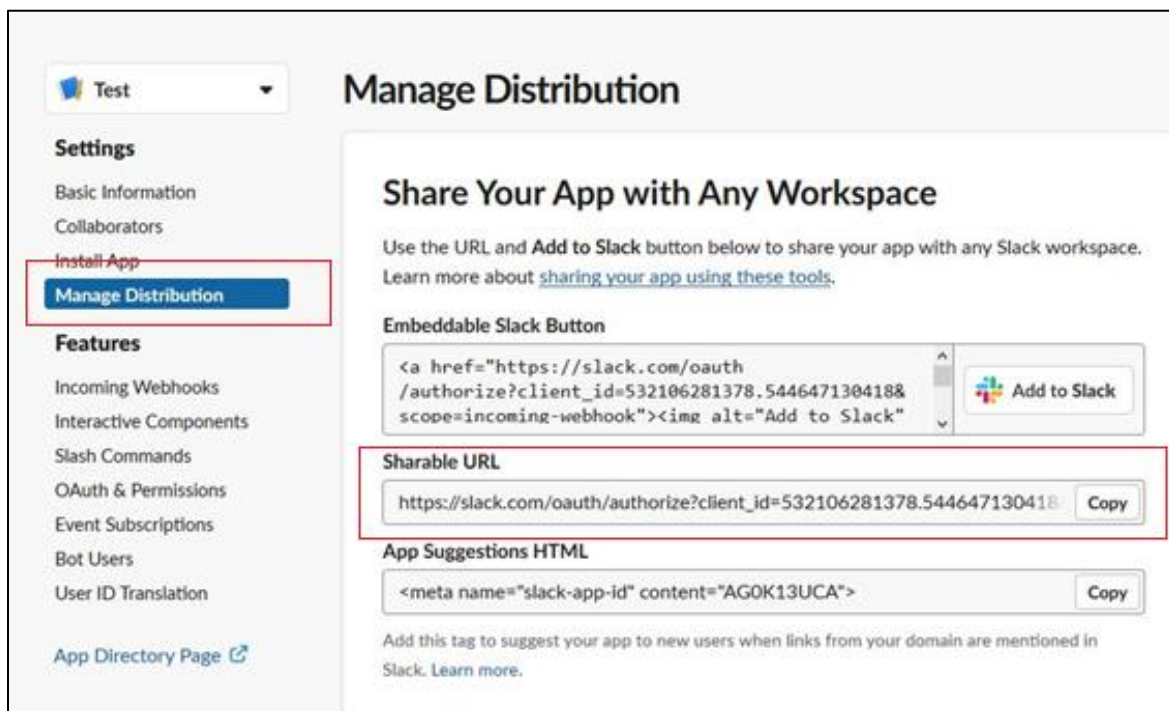


Figure 6

- Copy the **Sharable URL** and paste in any browser. Select the Enterprise Grid Workspace and Authorize.

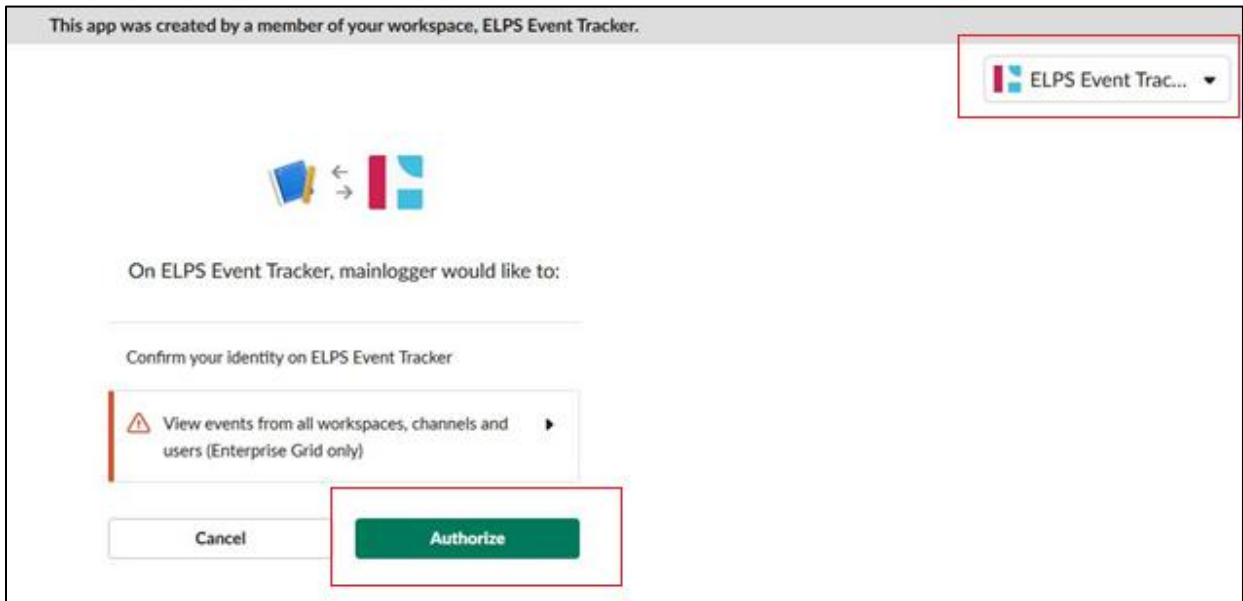


Figure 7

- Copy the Link from browser and paste in the Authorization URL field.

`localhost/?code=523347707555.546130704710.a36f88e74221de10ca7926748bb780319a250b02942c3b3ec3bc14ca9963ee12`

Figure 8

EventTracker Knowledge Pack

Knowledge Object

- Slack Enterprise Grid - App Events:** This Knowledge Object provides information related to App events logs such as App installed, app removed etc.
- Slack Enterprise Grid - Channel Events:** This Knowledge Object provides information related to Channel events logs.
- Slack Enterprise Grid - File Events:** This Knowledge Object provides information related to File events logs such as file uploaded, file deleted etc.
- Slack Enterprise Grid - Login and Logout Details:** This Knowledge Object provides information related to logout and login logs.
- Slack Enterprise Grid - User Events:** This Knowledge Object provides information related to user events logs such as user created, deleted etc.

- **Slack Enterprise Grid - Workplace and Organization Events:** This Knowledge Object provides information related to Workspace and Organization events logs.

Categories

- **Slack Enterprise Grid - App Events:** This category provides information related to App events logs such as App installed, app removed etc.
- **Slack Enterprise Grid - Channel Events:** This category provides information related to Channel events logs.
- **Slack Enterprise Grid - File Events:** This category provides information related to File events logs such as file uploaded, file deleted etc.
- **Slack Enterprise Grid - Login and Logout Details:** This category provides information related to logout and login logs.
- **Slack Enterprise Grid - User Events:** This category provides information related to user events logs such as user created, deleted etc.
- **Slack Enterprise Grid - Workplace and Organization Events:** This category provides information related to Workspace and Organization events logs.

Reports

- **Slack Enterprise Grid - App Events:** This Report provides information related to App events logs such as App installed, app removed etc.

| Computer | UserName | Action | Email ID | App Details | Slack Account | Slack Account Domain | Slack Account ID | Slack Account Type | Source IP Address | User Agent |
|--------------------------------|---------------|---------------|--------------------------|---|---------------|----------------------|------------------|--------------------|-------------------|--|
| R155-VM30(SLACK-SLACK.DEFAULT) | primary-owner | app_installed | ETAdmin@eventtracker.com | id = A0F7VRG6Q name = Outgoing WebHooks is_distributed = True is_directory_approved = True | KP_TEAM | eventtrackerip | TFN3489B4 | workspace | 19.168.32.56 | Mozilla/5.0 (Windows NT 10.0; Win64; x64) AppleWebKit/537.36 (KHTML, like Gecko) Chrome/71.0.3578.98 Safari/537.36 |
| R155-VM30(SLACK-SLACK.DEFAULT) | primary-owner | app_installed | ETAdmin@eventtracker.com | id = A0F7VRG6Q name = Outgoing WebHooks is_distributed = True is_directory_approved = True | KP_TEAM | eventtrackerip | TFN3489B4 | workspace | 19.168.32.56 | Mozilla/5.0 (Windows NT 10.0; Win64; x64) AppleWebKit/537.36 (KHTML, like Gecko) Chrome/71.0.3578.98 Safari/537.36 |
| R155-VM30(SLACK-SLACK.DEFAULT) | primary-owner | app_installed | ETAdmin@eventtracker.com | id = A0F7VRG6Q name = Outgoing WebHooks is_distributed = True is_directory_approved = True | KP_TEAM | eventtrackerip | TFN3489B4 | workspace | 19.168.32.56 | Mozilla/5.0 (Windows NT 10.0; Win64; x64) AppleWebKit/537.36 (KHTML, like Gecko) Chrome/71.0.3578.98 Safari/537.36 |

Figure 9

- **Slack Enterprise Grid - Channel Events:** This Report provides information related to Channel events logs.

| Computer | UserName | Source IP Address | Action | Email ID | Slack Account | Slack Account Domain | Slack Account ID | Slack Account Type | Channel Details | User Agent |
|-------------------------------|---------------|-------------------|------------------------|--------------------------|---------------|----------------------|------------------|--------------------|--|--|
| R1SS-VM30\SLACK-SLACK.DEFAULT | primary-owner | 192.168.23.65 | public_channel_created | ETAdmin@eventtracker.com | KP_TEAM | eventtracker.kp | TFN3489B4 | workspace | id = CFMESS9K3 privacy = public name = general is_shared = False is_org_shared = False | Mozilla/5.0 (Windows NT 10.0; Win64; x64) AppleWebKit/537.36 (KHTML, like Gecko) Chrome/71.0.3578.98 Safari/537.36 |
| R1SS-VM30\SLACK-SLACK.DEFAULT | primary-owner | 192.168.23.65 | user_channel_join | ETAdmin@eventtracker.com | KP_TEAM | eventtracker.kp | TFN3489B4 | workspace | id = CFMESS9K3 privacy = public name = general is_shared = False is_org_shared = False | Mozilla/5.0 (Windows NT 10.0; Win64; x64) AppleWebKit/537.36 (KHTML, like Gecko) Chrome/71.0.3578.98 Safari/537.36 |
| R1SS-VM30\SLACK-SLACK.DEFAULT | primary-owner | 192.168.23.65 | public_channel_created | ETAdmin@eventtracker.com | KP_TEAM | eventtracker.kp | TFN3489B4 | workspace | id = CFMESS9K3 privacy = public name = general is_shared = False is_org_shared = False | Mozilla/5.0 (Windows NT 10.0; Win64; x64) AppleWebKit/537.36 (KHTML, like Gecko) Chrome/71.0.3578.98 Safari/537.36 |
| R1SS-VM30\SLACK-SLACK.DEFAULT | primary-owner | 192.168.23.65 | user_channel_join | ETAdmin@eventtracker.com | KP_TEAM | eventtracker.kp | TFN3489B4 | workspace | id = CFMESS9K3 privacy = public name = general is_shared = False is_org_shared = False | Mozilla/5.0 (Windows NT 10.0; Win64; x64) AppleWebKit/537.36 (KHTML, like Gecko) Chrome/71.0.3578.98 Safari/537.36 |

Figure 10

- **Slack Enterprise Grid - Login and Logout Details:** This Report provides information related to logout and login logs.

| Computer | UserName | Email ID | Action | Slack Account | Slack Account Domain | Slack Account ID | Slack Account Type | Source IP Address | User Agent |
|-------------------------------|----------|----------------------------|-------------|--------------------|----------------------|------------------|--------------------|-------------------|--|
| R1SS-VM30\SLACK-SLACK.DEFAULT | ETAdmin | ETAdmin.k@eventtracker.com | user_logout | ELPS Event Tracker | elps-eventtracker | EFDA7LTGB | enterprise | 14.98.4.18 | Mozilla/5.0 (Windows NT 10.0; Win64; x64) AppleWebKit/537.36 (KHTML, like Gecko) Chrome/71.0.3578.98 Safari/537.36 |
| R1SS-VM30\SLACK-SLACK.DEFAULT | ETAdmin | ETAdmin.k@eventtracker.com | user_logout | ELPS Event Tracker | elps-eventtracker | EFDA7LTGB | enterprise | 14.98.4.18 | Mozilla/5.0 (Windows NT 10.0; Win64; x64) AppleWebKit/537.36 (KHTML, like Gecko) Chrome/71.0.3578.98 Safari/537.36 |
| R1SS-VM30\SLACK-SLACK.DEFAULT | ETAdmin | ETAdmin.k@eventtracker.com | user_logout | ELPS Event Tracker | elps-eventtracker | EFDA7LTGB | enterprise | 14.98.4.18 | Mozilla/5.0 (Windows NT 10.0; Win64; x64) AppleWebKit/537.36 (KHTML, like Gecko) Chrome/71.0.3578.98 Safari/537.36 |
| R1SS-VM30\SLACK-SLACK.DEFAULT | ETAdmin | ETAdmin.k@eventtracker.com | user_logout | ELPS Event Tracker | elps-eventtracker | EFDA7LTGB | enterprise | 14.98.4.18 | Mozilla/5.0 (Windows NT 10.0; Win64; x64) AppleWebKit/537.36 (KHTML, like Gecko) Chrome/71.0.3578.98 Safari/537.36 |

Figure 11

- **Slack Enterprise Grid - User Events:** This Report provides information related to user events logs such as user.

| Computer | Action | UserName | Email ID | Source IP Address | Slack Account | Slack Account Domain | Slack Account ID | Slack Account Type | User Agent |
|-------------------------------|----------------------|---------------|--------------------------|-------------------|---------------|----------------------|------------------|--------------------|--|
| R1SS-VM30\SLACK-SLACK.DEFAULT | user_created | primary-owner | ETAdmin@eventtracker.com | 192.168.32.40 | ETA admin | eventtrackeradmin | TFEU3DL02 | workspace | Mozilla/5.0 (Windows NT 10.0; Win64; x64; rv:64.0) Gecko/20100101 Firefox/64.0 |
| R1SS-VM30\SLACK-SLACK.DEFAULT | user_created | primary-owner | ETAdmin@eventtracker.com | 192.168.32.40 | ETA admin | eventtrackeradmin | TFEU3DL02 | workspace | Mozilla/5.0 (Windows NT 10.0; Win64; x64; rv:64.0) Gecko/20100101 Firefox/64.0 |
| R1SS-VM30\SLACK-SLACK.DEFAULT | role_change_to_owner | Pratik | ETAdmin@eventtracker.com | 192.168.32.40 | ETA admin | eventtrackeradmin | TFEU3DL02 | workspace | Mozilla/5.0 (Windows NT 10.0; Win64; x64; rv:64.0) Gecko/20100101 Firefox/64.0 |
| R1SS-VM30\SLACK-SLACK.DEFAULT | user_created | primary-owner | ETAdmin@eventtracker.com | 192.168.32.40 | ETA admin | eventtrackeradmin | TFEU3DL02 | workspace | Mozilla/5.0 (Windows NT 10.0; Win64; x64; rv:64.0) Gecko/20100101 Firefox/64.0 |
| R1SS-VM30\SLACK-SLACK.DEFAULT | role_change_to_owner | Pratik | ETAdmin@eventtracker.com | 192.168.32.40 | ETA admin | eventtrackeradmin | TFEU3DL02 | workspace | Mozilla/5.0 (Windows NT 10.0; Win64; x64; rv:64.0) Gecko/20100101 Firefox/64.0 |
| R1SS-VM30\SLACK-SLACK.DEFAULT | user_created | primary-owner | ETAdmin@eventtracker.com | 192.168.32.40 | ETA admin | eventtrackeradmin | TFEU3DL02 | workspace | Mozilla/5.0 (Windows NT 10.0; Win64; x64; rv:64.0) Gecko/20100101 Firefox/64.0 |
| R1SS-VM30\SLACK-SLACK.DEFAULT | role_change_to_owner | Pratik | ETAdmin@eventtracker.com | 192.168.32.40 | ETA admin | eventtrackeradmin | TFEU3DL02 | workspace | Mozilla/5.0 (Windows NT 10.0; Win64; x64; rv:64.0) Gecko/20100101 Firefox/64.0 |
| R1SS-VM30\SLACK-SLACK.DEFAULT | role_change_to_owner | Pratik | ETAdmin@eventtracker.com | 192.168.32.40 | ETA admin | eventtrackeradmin | TFEU3DL02 | workspace | Mozilla/5.0 (Windows NT 10.0; Win64; x64; rv:64.0) Gecko/20100101 Firefox/64.0 |
| R1SS-VM30\SLACK-SLACK.DEFAULT | role_change_to_owner | Pratik | ETAdmin@eventtracker.com | 192.168.32.40 | ETA admin | eventtrackeradmin | TFEU3DL02 | workspace | Mozilla/5.0 (Windows NT 10.0; Win64; x64; rv:64.0) Gecko/20100101 Firefox/64.0 |

Figure 12

- **Slack Enterprise Grid - Workplace and Organization Events:** This Report provides information related to Workspace and Organization events logs.

| UserName | Action | Email ID | Slack Account | Slack Account Domain | Slack Account ID | Slack Account Type | Source IP Address | User Agent |
|---------------|--|--------------------------|--------------------|----------------------|------------------|--------------------|-------------------|--|
| primary-owner | pref.dm_retention_changed | ETAdmin@eventtracker.com | ELPS Event Tracker | elps-eventtracker | EFDA7LTGB | enterprise | 192.168.25.12 | Mozilla/5.0 (Macintosh; Intel Mac OS X 10_13_6) AppleWebKit/537.36 (KHTML, like Gecko) Chrome/71.0.3578.98 Safari/537.36 |
| primary-owner | pref.private_channel_retention_changed | ETAdmin@eventtracker.com | ELPS Event Tracker | elps-eventtracker | EFDA7LTGB | enterprise | 192.168.25.12 | Mozilla/5.0 (Macintosh; Intel Mac OS X 10_13_6) AppleWebKit/537.36 (KHTML, like Gecko) Chrome/71.0.3578.98 Safari/537.36 |
| primary-owner | pref.public_channel_retention_changed | ETAdmin@eventtracker.com | ELPS Event Tracker | elps-eventtracker | EFDA7LTGB | enterprise | 192.168.25.12 | Mozilla/5.0 (Macintosh; Intel Mac OS X 10_13_6) AppleWebKit/537.36 (KHTML, like Gecko) Chrome/71.0.3578.98 Safari/537.36 |
| primary-owner | pref.file_retention_changed | ETAdmin@eventtracker.com | ELPS Event Tracker | elps-eventtracker | EFDA7LTGB | enterprise | 192.168.25.12 | Mozilla/5.0 (Macintosh; Intel Mac OS X 10_13_6) AppleWebKit/537.36 (KHTML, like Gecko) Chrome/71.0.3578.98 Safari/537.36 |
| primary-owner | pref.dm_retention_changed | ETAdmin@eventtracker.com | ELPS Event Tracker | elps-eventtracker | EFDA7LTGB | enterprise | 192.168.25.12 | Mozilla/5.0 (Macintosh; Intel Mac OS X 10_13_6) AppleWebKit/537.36 (KHTML, like Gecko) Chrome/71.0.3578.98 Safari/537.36 |
| primary-owner | organization_created | ETAdmin@eventtracker.com | ELPS Event Tracker | elps-eventtracker | EFDA7LTGB | enterprise | 192.168.25.12 | Mozilla/5.0 (Macintosh; Intel Mac OS X 10_13_6) AppleWebKit/537.36 (KHTML, like Gecko) Chrome/71.0.3578.98 Safari/537.36 |

Figure 13

- **Slack Enterprise Grid - File Events:** This Report provides information related to File events logs such as file uploaded, file deleted etc.

Dashboards

- **Slack Enterprise Grid - App Events:** This dashboard provides information related to App events logs such as App installed, app removed etc.

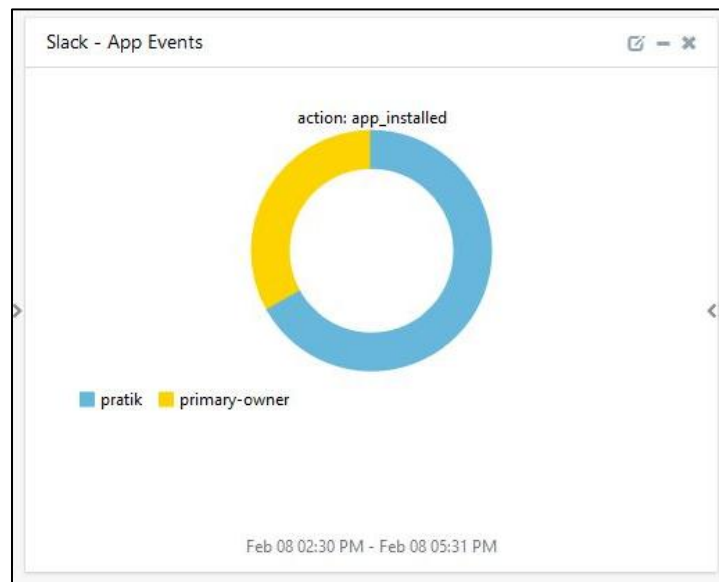


Figure 14

- **Slack Enterprise Grid - File Events:** This dashboard provides information related to File events logs such as file uploaded, file deleted etc.

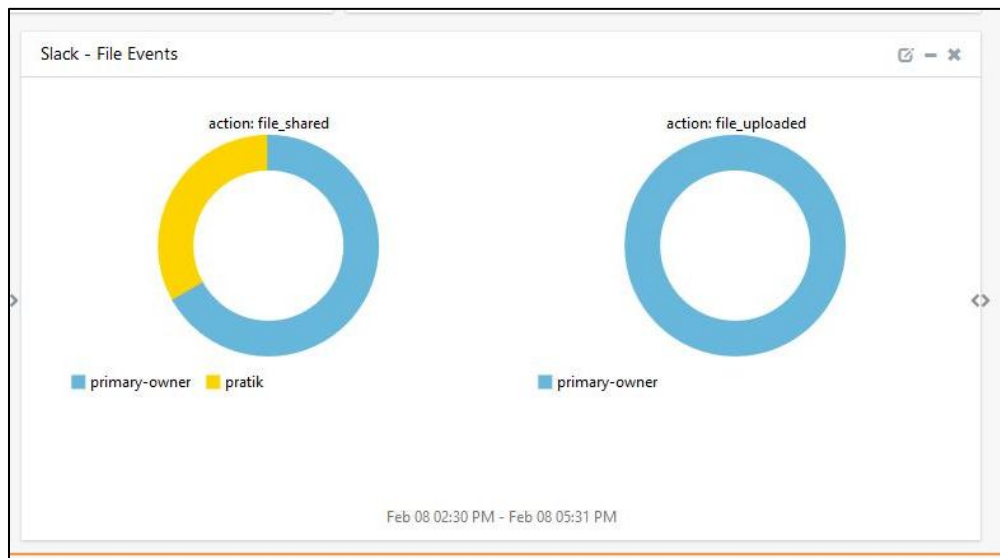


Figure 15

- **Slack Enterprise Grid - Login and Logout Details:** This dashboard provides information related to logout and login logs.

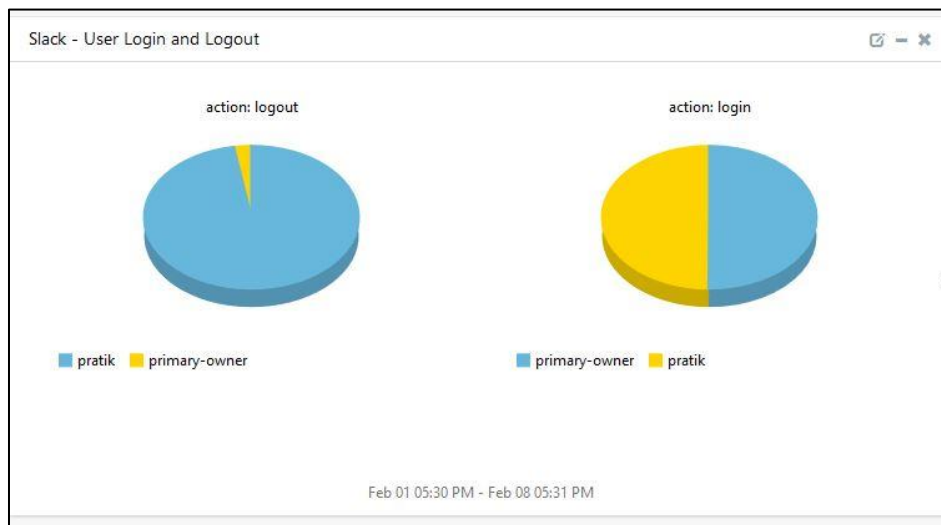


Figure 16

- **Slack Enterprise Grid - User Events:** This dashboard provides information related to user events logs such as user created, deleted etc.

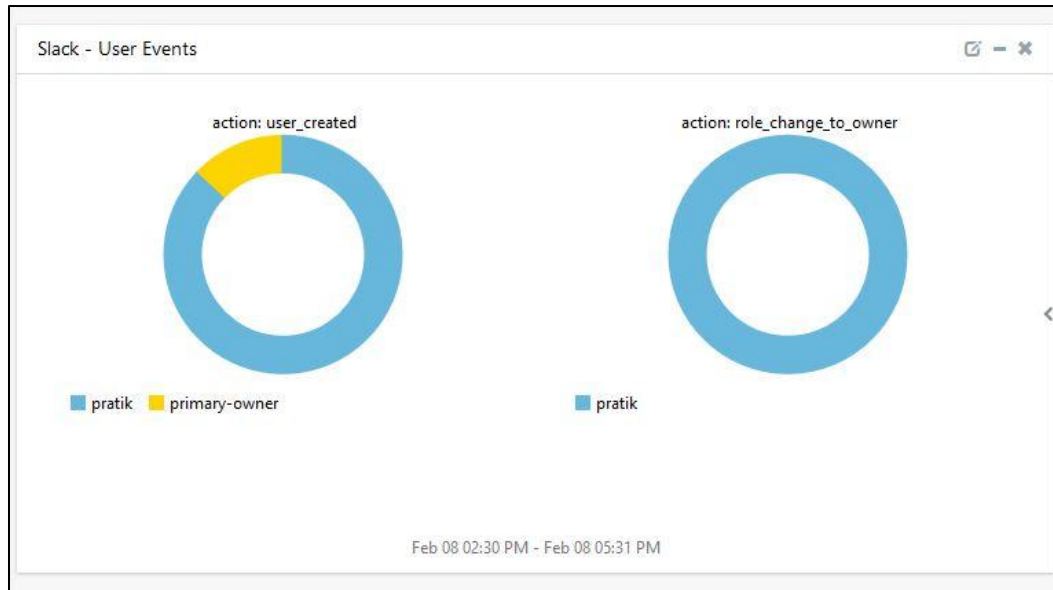


Figure 17

- **Slack Enterprise Grid - Workplace and Organization Events:** This dashboard provides information related to Workspace and Organization events logs.

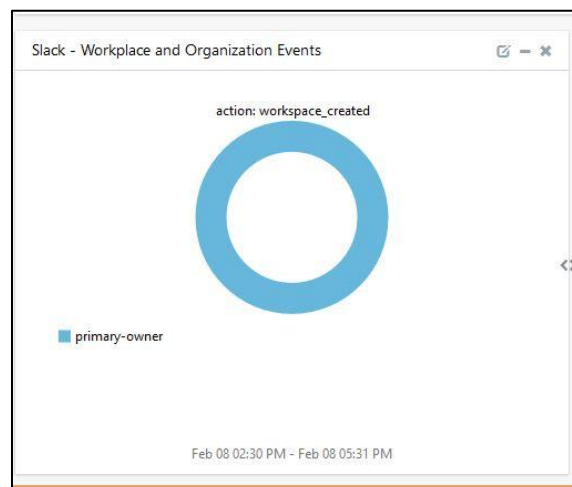


Figure 18

- **Slack Enterprise Grid - Channel Events:** This dashboard provides information related to Channel events logs.

Import Slack Enterprise Grid knowledge pack into EventTracker

NOTE: Import knowledge pack items in the following sequence:

- Categories
- Alerts
- Token Templates
- Knowledge Objects
- Flex Reports
- Dashboards

1. Launch **EventTracker Control Panel**.
2. Double click **Export Import Utility**.

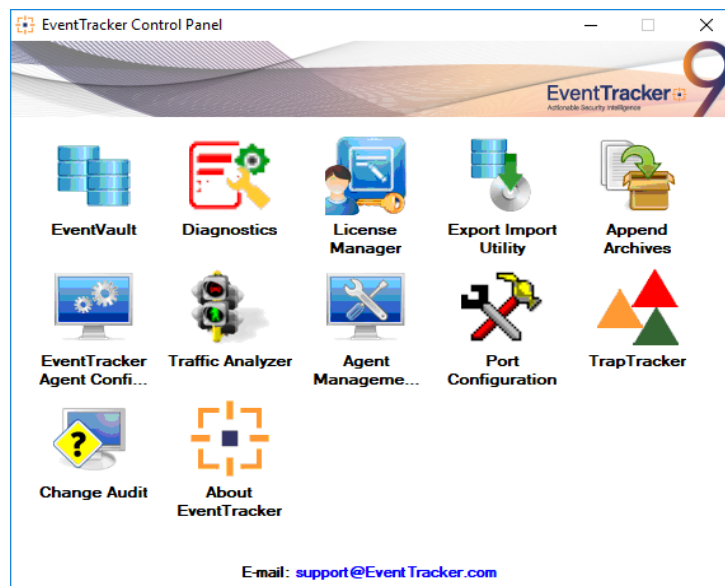
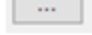


Figure 19

3. Click the **Import** tab.

Category

1. Click **Category** option, and then click the browse  button.

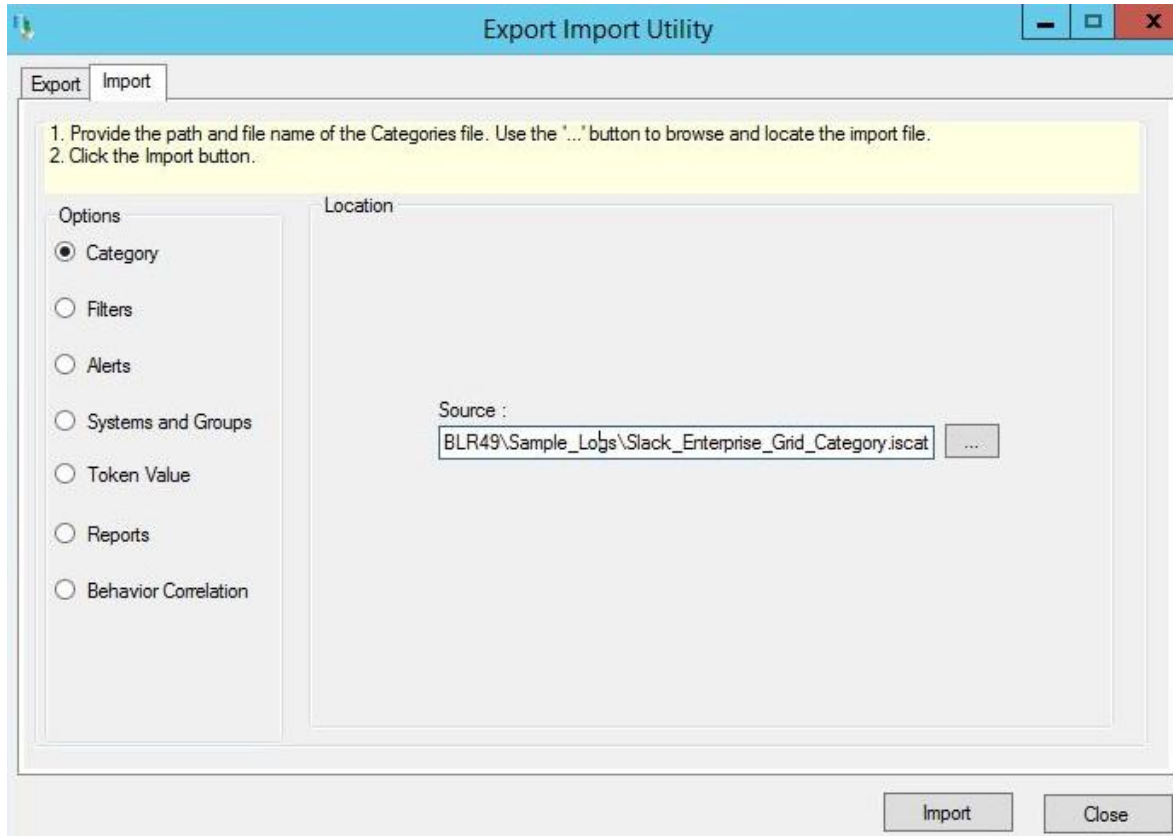


Figure 20

2. Locate **Category_Slack Enterprise_Grid.iscat** file, and then click the **Open** button.
3. To import categories, click the **Import** button. EventTracker displays success message.

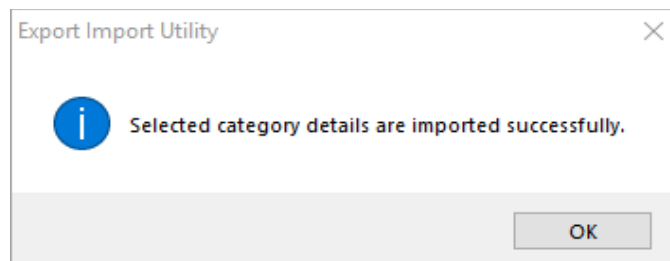


Figure 21

4. Click **OK**, and then click the **Close** button.

Token Templates



1. Click **Parsing rules** under **Admin** option in the EventTracker manager page.
2. Move to **Template** and click on import configuration  icon on the top right corner.
3. In the popup window, browse the file named **Token Template_Slack Enterprise Grid.ettd**.



Figure 22

4. Now select all the check box and then click on  Import option.

Knowledge Objects

1. Click **Knowledge objects** under **Admin** option in the EventTracker manager page.
2. Locate the **KO_Slack Enterprise Grid.etko** file.

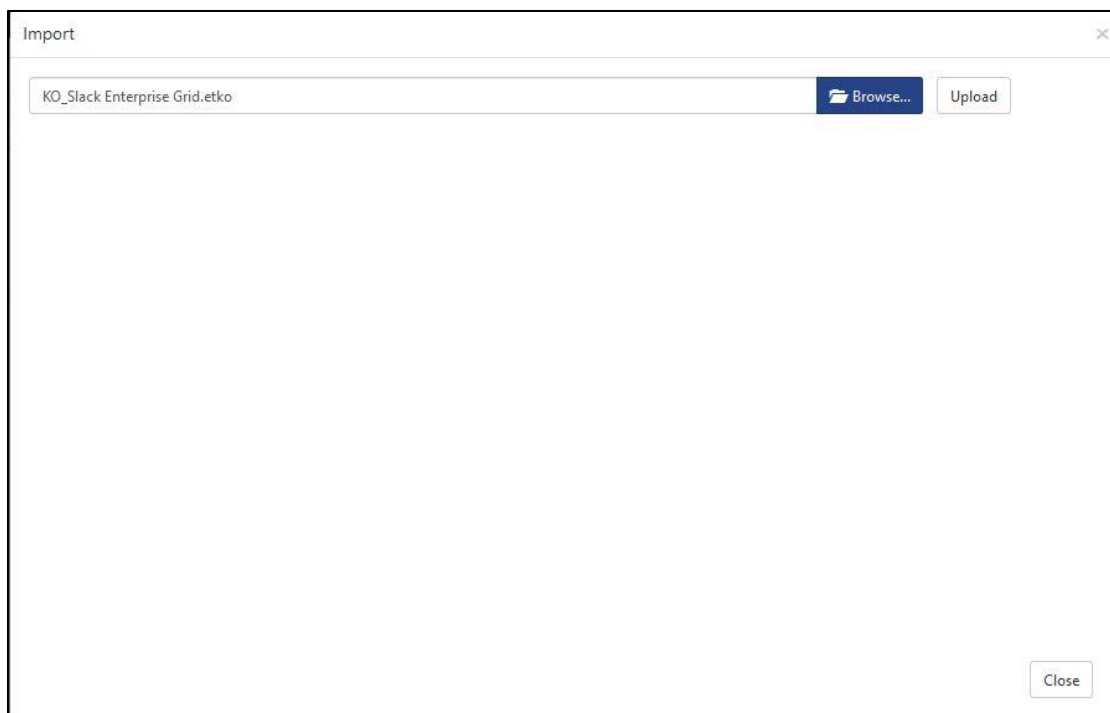


Figure 23

3. Click the '**Upload**' option.

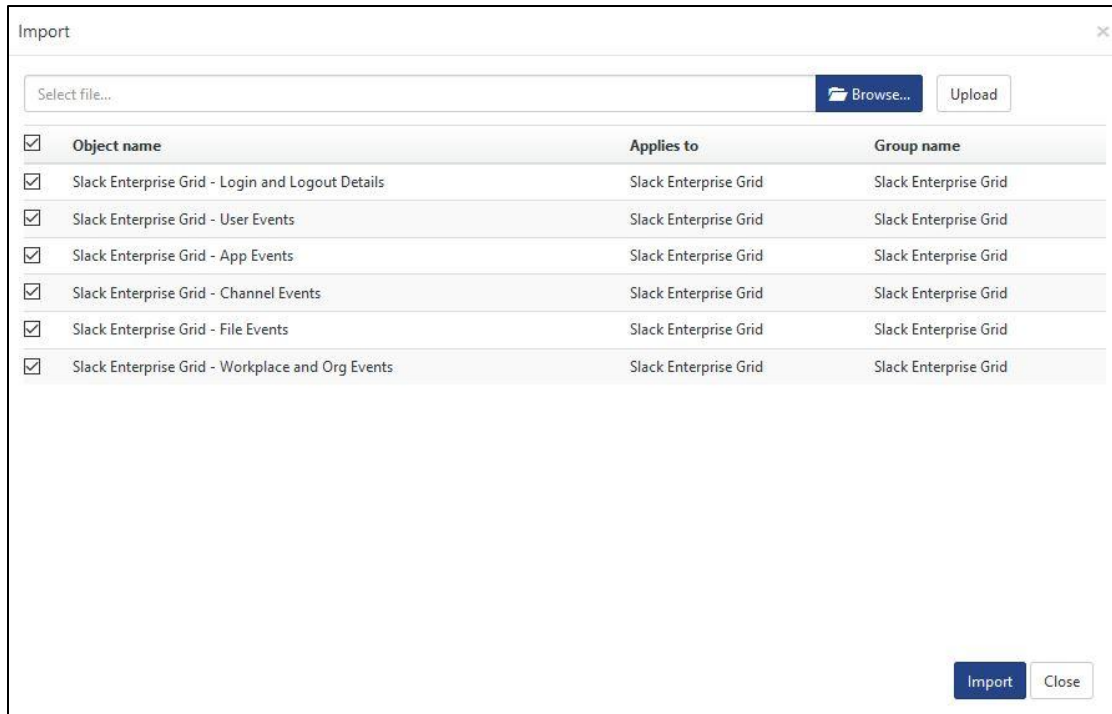


Figure 24

4. Now select all the check box and then click on '**Import**' option.
5. Knowledge objects are now imported successfully.

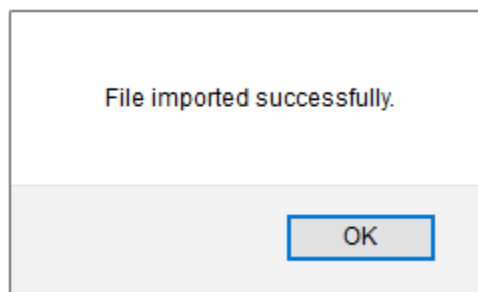


Figure 25

6. Click **OK**, and then click the **Close** button.

Flex Reports

On EventTracker Control Panel,

1. Click **Reports** option, and select new (*.etcrx) from the option.

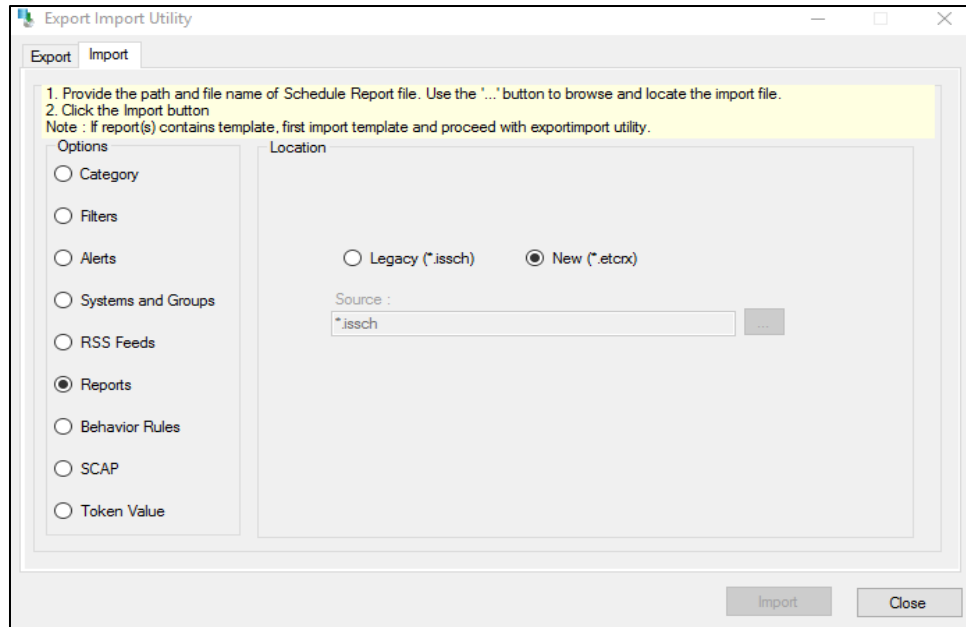


Figure 26

2. Locate the **Reports_Slack Enterprise Grid.etcrx** file and select all the check box.

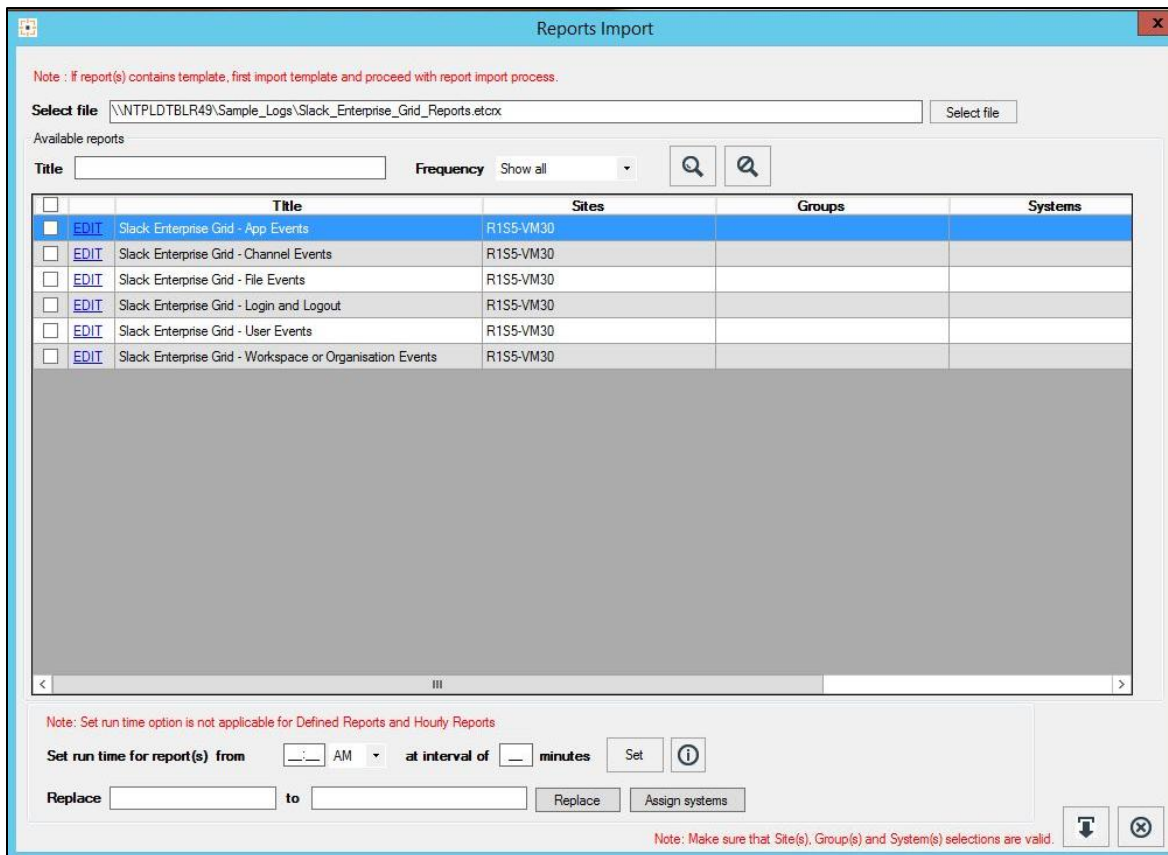


Figure 27

3. Click the **Import** button to import the reports. EventTracker displays success message.

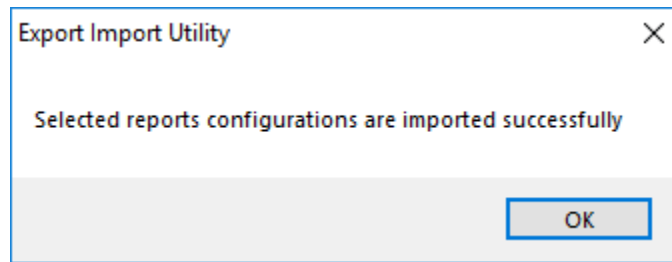


Figure 28

4. Click **OK**, and then click the **Close** button.

Verify Slack Enterprise Grid Knowledge Pack in EventTracker

Categories

1. Logon to **EventTracker Enterprise**.
2. Click **Admin** dropdown, and then click **Categories**.
3. In **Category Tree** to view imported categories, scroll down and expand **Slack Enterprise Grid** group folder to view the imported categories.

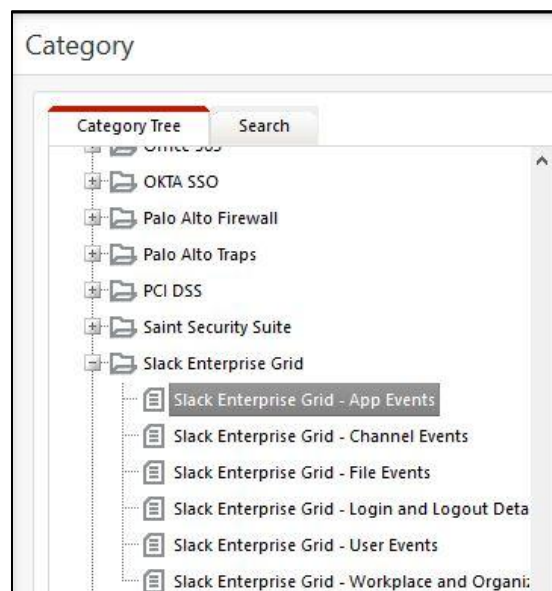


Figure 29

Token Templates

1. In the **EventTracker Enterprise** web interface, click the **Admin** dropdown, and then click **Parsing Rules**.
2. On **Template** tab, click on the **Slack Enterprise Grid** group folder to view the imported Token Values.

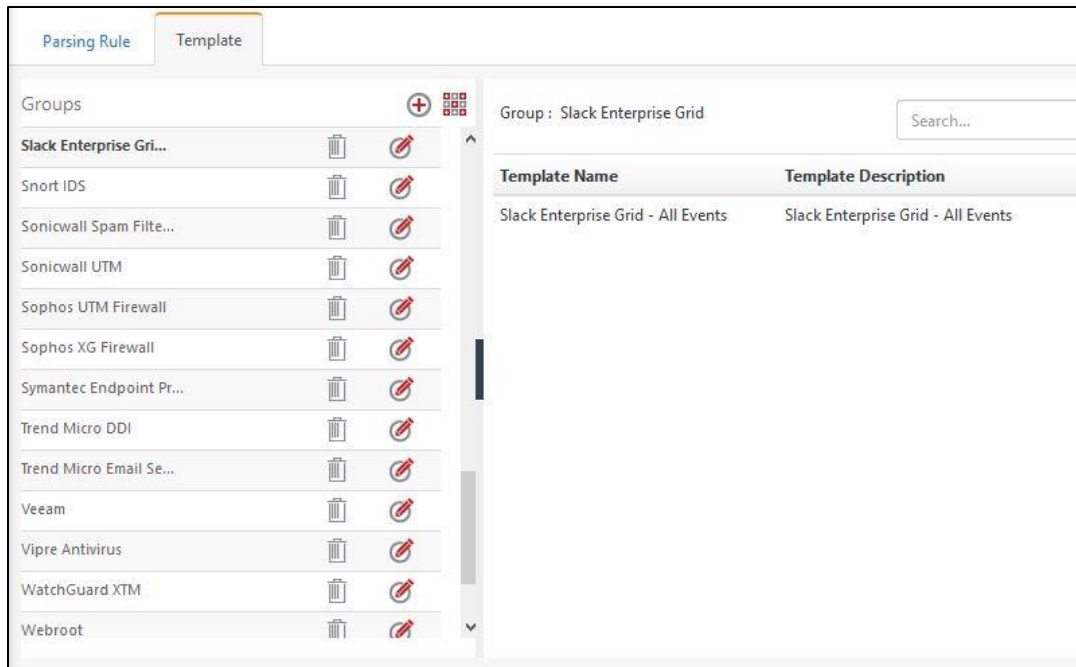


Figure 30

Knowledge Objects

1. In the **EventTracker Enterprise** web interface, click the **Admin** dropdown, and then click **Knowledge Objects**.
2. In the **Knowledge Object** tree, expand **Slack Enterprise Grid** group folder to view the imported Knowledge objects.

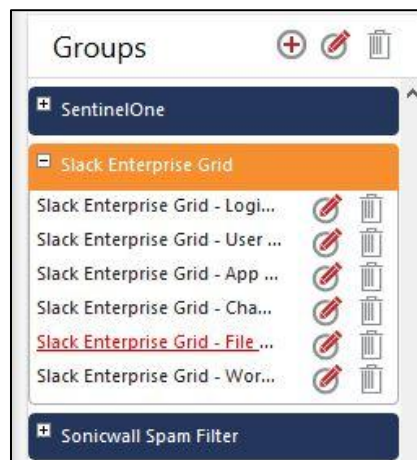


Figure 31

Flex Reports

1. In the **EventTracker Enterprise** web interface, click the **Reports** menu, and then select **Report Configuration**.

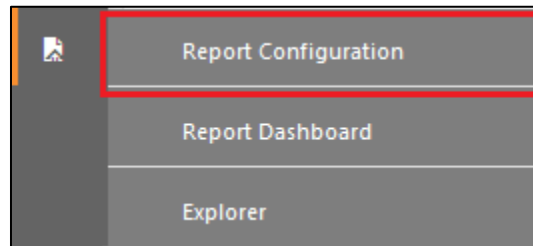


Figure 32

2. In **Reports Configuration** pane, select **Defined** option.
3. Click on the **Slack Enterprise Grid** group folder to view the imported Slack Enterprise Grid reports.

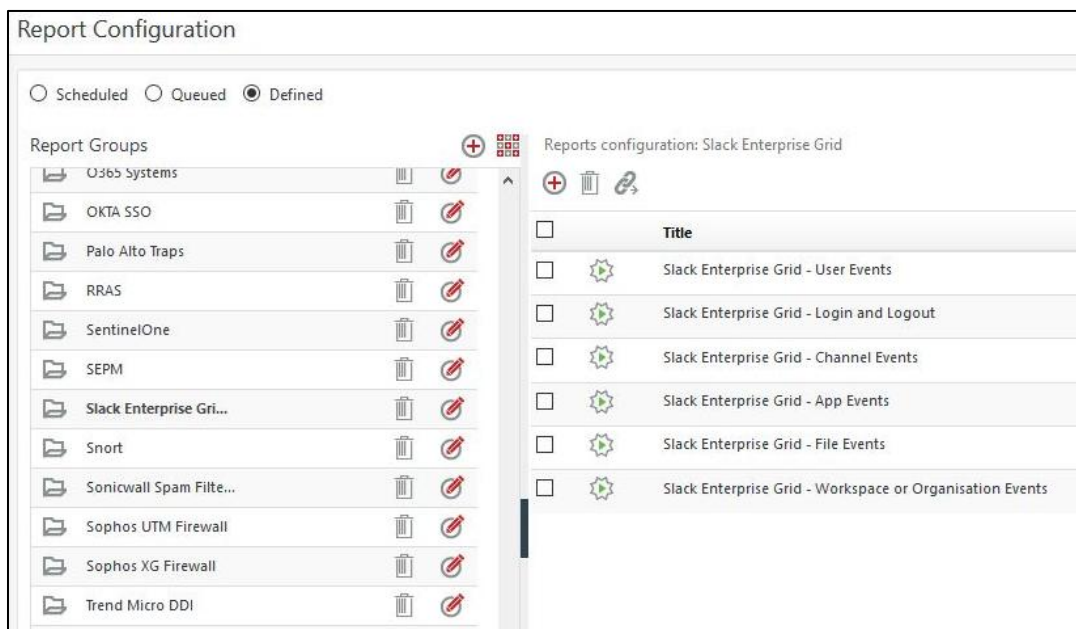


Figure 33