

How to- Configure Network Password Manager to forward logs to EventTracker

EventTracker v9.0 and above

Abstract

This guide helps you in configuring **Network Password Manager** and **EventTracker** to receive Network Password Manager events. You will find the detailed procedures required for monitoring Network Password Manager.

Scope

The configurations detailed in this guide are consistent with **EventTracker v9.x** and later, **Network Password Manager**

Audience

Network Password Manager users, who wish to forward Events to EventTracker and monitor events using EventTracker.

The information contained in this document represents the current view of Netsurion on the issues discussed as of the date of publication. Because Netsurion must respond to changing market conditions, it should not be interpreted to be a commitment on the part of Netsurion, and Netsurion cannot guarantee the accuracy of any information presented after the date of publication.

This document is for informational purposes only. Netsurion MAKES NO WARRANTIES, EXPRESS OR IMPLIED, AS TO THE INFORMATION IN THIS DOCUMENT.

Complying with all applicable copyright laws is the responsibility of the user. Without limiting the rights under copyright, this paper may be freely distributed without permission from Netsurion, if its content is unaltered, nothing is added to the content and credit to Netsurion is provided.

Netsurion may have patents, patent applications, trademarks, copyrights, or other intellectual property rights covering subject matter in this document. Except as expressly provided in any written license agreement from Netsurion, the furnishing of this document does not give you any license to these patents, trademarks, copyrights, or other intellectual property.

The example companies, organizations, products, people and events depicted herein are fictitious. No association with any real company, organization, product, person or event is intended or should be inferred.

© 2020 Netsurion. All rights reserved. The names of actual companies and products mentioned herein may be the trademarks of their respective owners.

Table of Contents

1. Overview.....	3
2. Prerequisites.....	3
3. Integration of Network Password Manager with EventTracker	3
3.1 Enabling Audit log in Network Password Manager	3
3.2 Integrating Network Password Manager with EventTracker using LogFile Monitor (LFM).....	5
3.3 Enabling diagnostic filter logging exception in EventTracker.....	8

1. Overview

Network Password Manager is a multi-user, client-server enterprise password management software that allows you to store and manage passwords within the company securely.

EventTracker helps to monitor events from **Network Password Manager**. It's knowledge object and flex reports will help you to detect file less attacks, backdoor drops and virus/malware.

EventTracker's built-in knowledge pack enables you to gather business intelligence providing increased security, performance, availability, and reliability of your systems.

Through alerts, knowledge base solutions, and reports, EventTracker helps you correct problems long before a disastrous failure occurs.

2. Prerequisites

- Admin privileges for **Network Password Manager** and should be installed.
- **EventTracker agent** should be installed in the system.

3. Integration of Network Password Manager with EventTracker

3.1 Enabling Audit log in Network Password Manager

Enable Audit log in Network Password Manager to get the audit logs for file management, login and logoff.

1. Navigate to the Network Password Manager installation folder in your system. Open **Options.ini** config file with administrator access.



Figure 1

2. In the **Options.ini** file, set **Audit=2**.

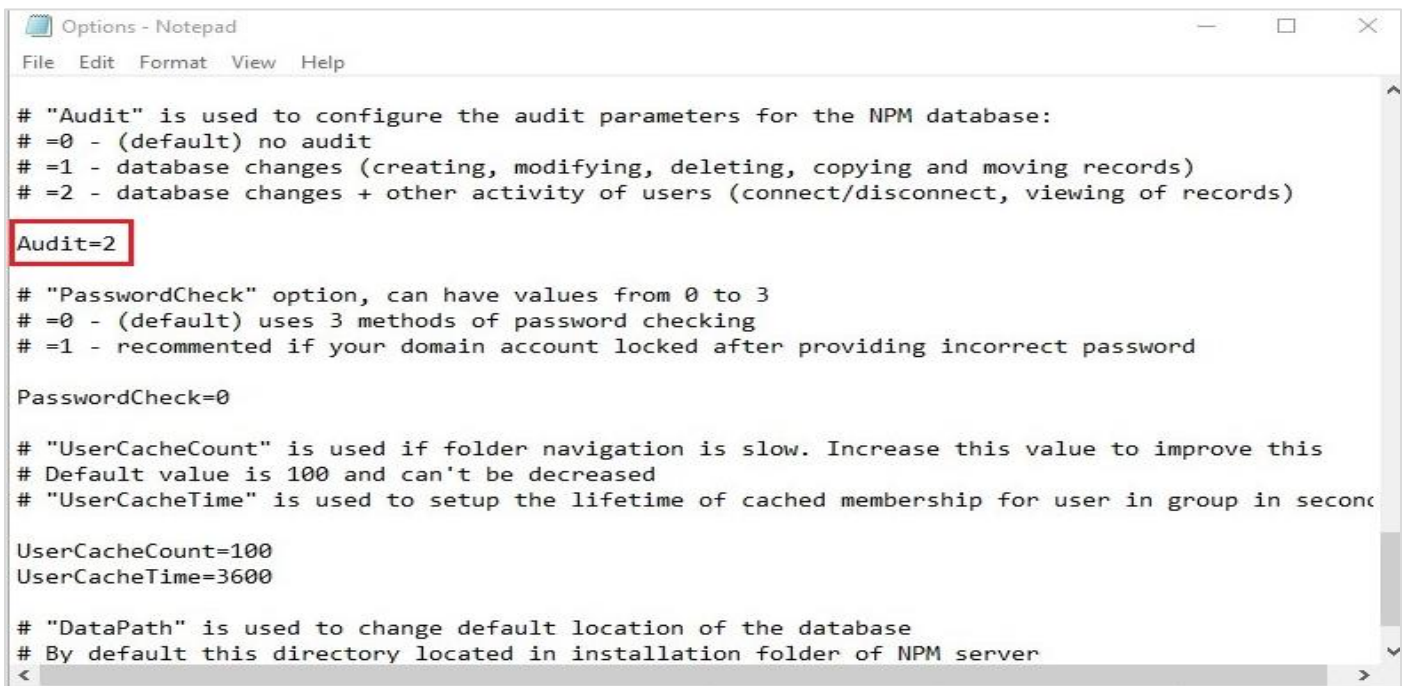


Figure 2

3.2 Integrating Network Password Manager with EventTracker using LogFile Monitor (LFM)

1. To Launch the EventTracker Agent Configuration go to **Program Files (x86)\Prism Microsystems\EventTracker\Agent**.
2. Open **etaconfig**.
3. In EventTracker Agent Configuration dialog box, click the **Logfile Monitor** tab. Click Add File Name for new Log filter Monitoring.

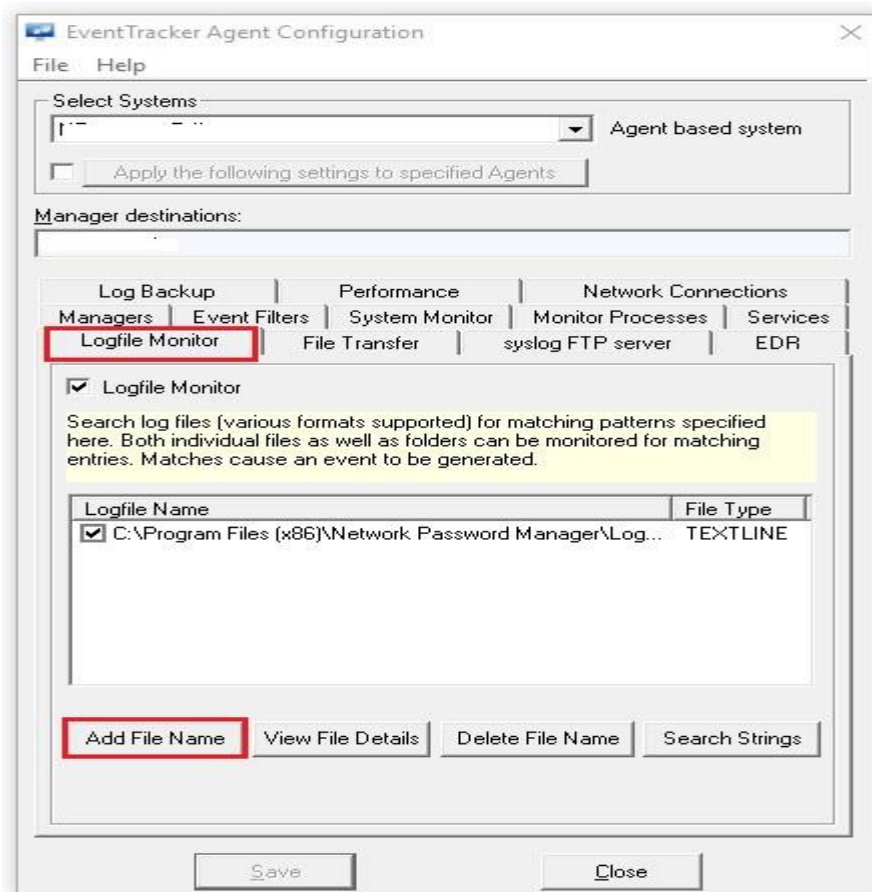


Figure 3

4. Browse to the Drive Name/Folder Name by **...** button and tick **Get All existing Log Files**, set event source as **NetPM** and click **OK**

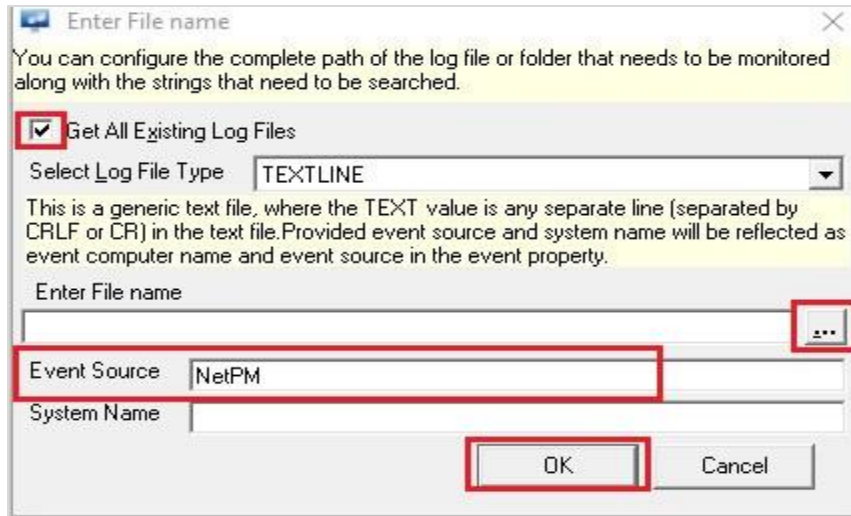


Figure 4

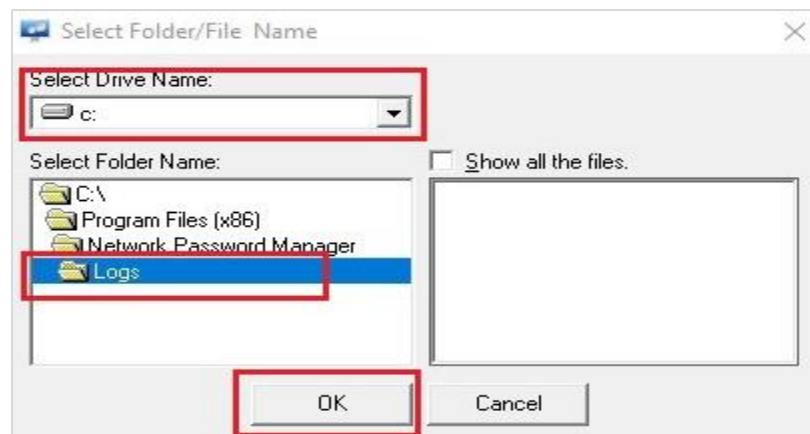


Figure 5

5. Enter the **Log file extension as *.log** and click **OK**.



Figure 6

6. Verify the log file extension and path, Click **OK**.



Figure 7

7. Select the **file path** and **save**.

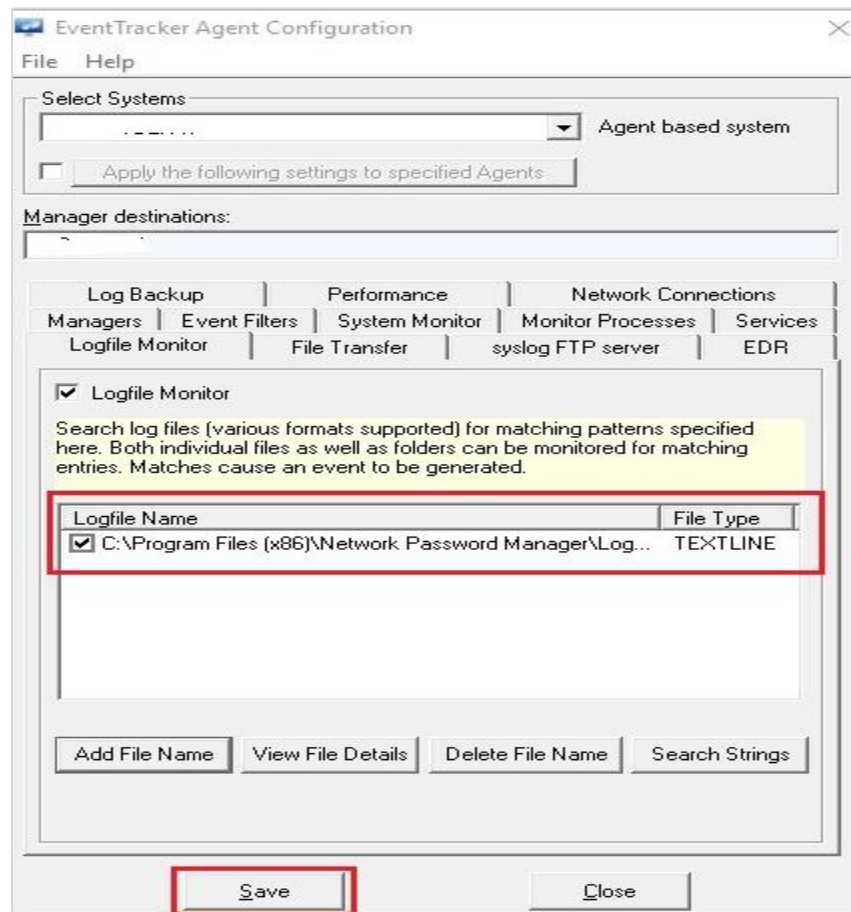


Figure 8

3.3 Enabling diagnostic filter logging exception in EventTracker

Follow the steps given below to enable realtime monitoring for Network password manager logging:

1. To Launch the EventTracker Agent Configuration go to **Program Files (x86)\Prism Microsystems\EventTracker\Agent**.
2. Find the **etaconfig** and double click.
3. In EventTracker Agent Configuration dialog box, click the **Event Filters** tab and then go to **filter exception**.

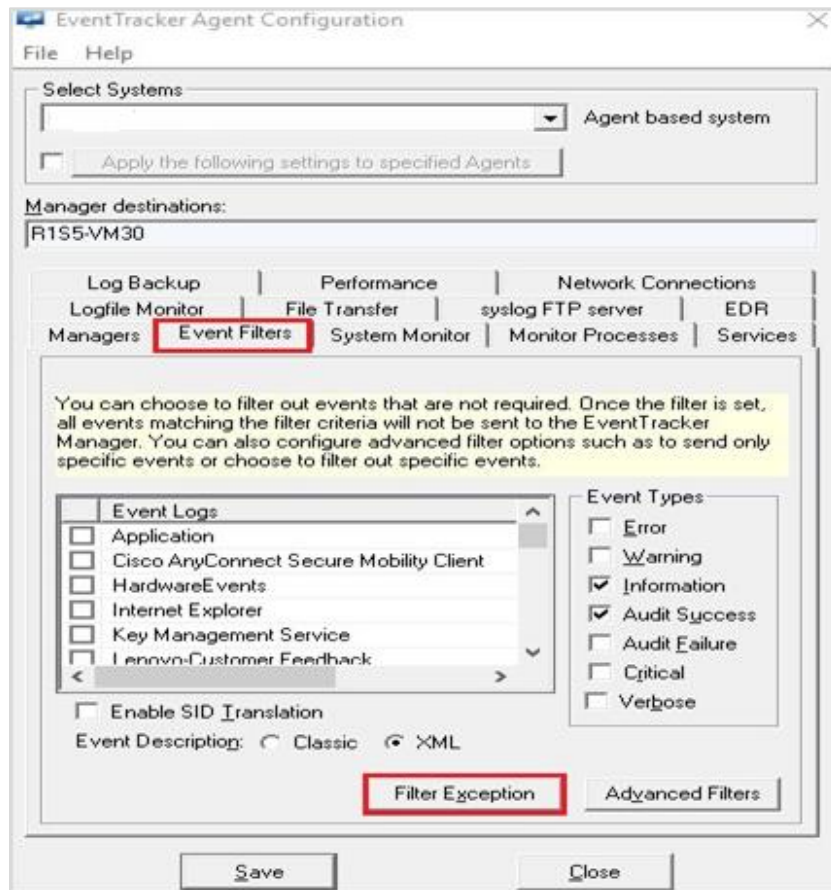


Figure 9

4. In the Filter Exception, click **New** tab

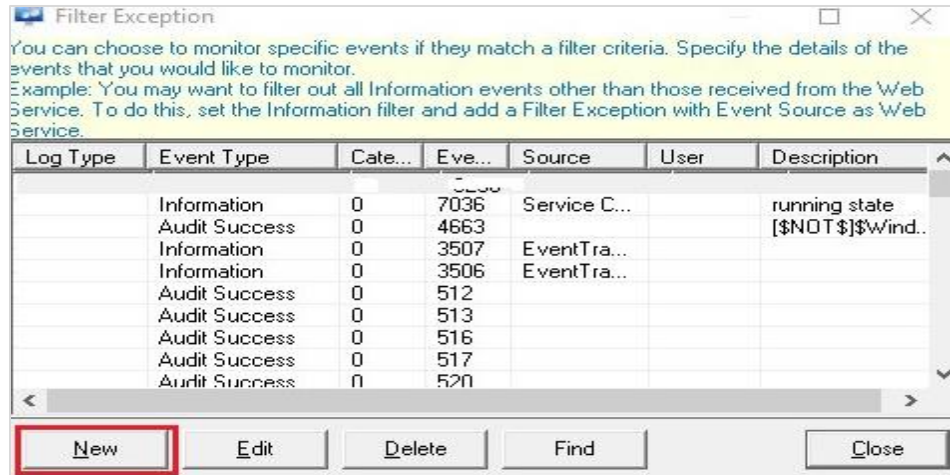


Figure 10

5. Enter Event ID: **3230** and click **OK**.

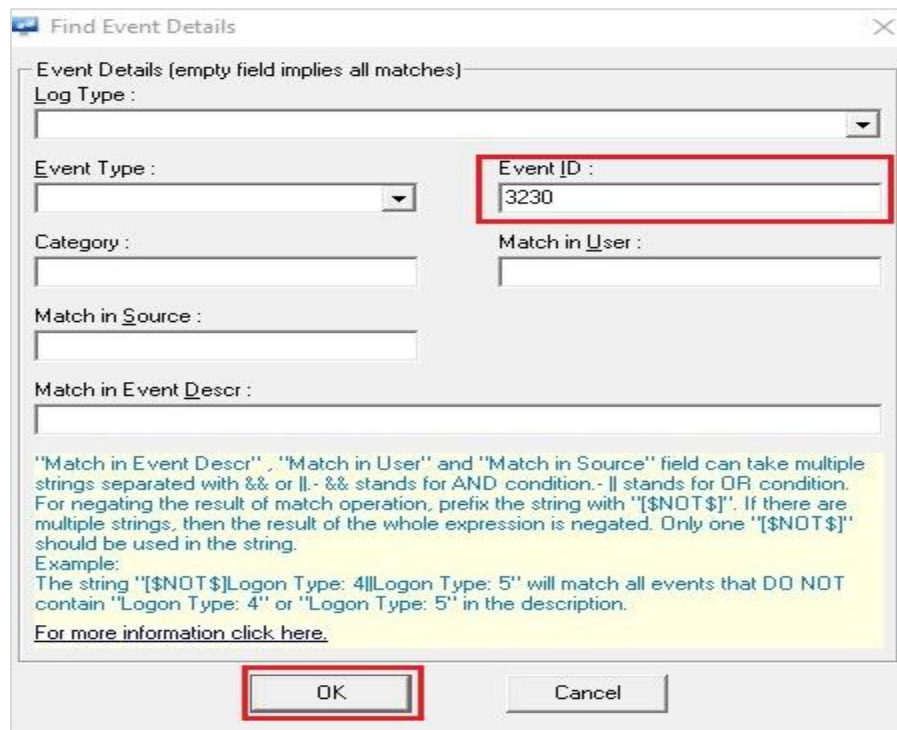


Figure 11