

How to - Configure KnownBe4 to forward logs to EventTracker

EventTracker v9.0 and above

Abstract

This guide helps you in configuring **KnowBe4** and **EventTracker** to receive KnowBe4 events. You will find the detailed procedures required for monitoring KnowBe4.

Scope

The configurations detailed in this guide are consistent with **EventTracker v9.x** and later, **KnowBe4**.

Audience

KnowBe4 users, who wish to forward events to EventTracker and monitor events using EventTracker.

The information contained in this document represents the current view of Netsurion on the issues discussed as of the date of publication. Because Netsurion must respond to changing market conditions, it should not be interpreted to be a commitment on the part of Netsurion, and Netsurion cannot guarantee the accuracy of any information presented after the date of publication.

This document is for informational purposes only. Netsurion MAKES NO WARRANTIES, EXPRESS OR IMPLIED, AS TO THE INFORMATION IN THIS DOCUMENT.

Complying with all applicable copyright laws is the responsibility of the user. Without limiting the rights under copyright, this paper may be freely distributed without permission from Netsurion, if its content is unaltered, nothing is added to the content and credit to Netsurion is provided.

Netsurion may have patents, patent applications, trademarks, copyrights, or other intellectual property rights covering subject matter in this document. Except as expressly provided in any written license agreement from Netsurion, the furnishing of this document does not give you any license to these patents, trademarks, copyrights, or other intellectual property.

The example companies, organizations, products, people and events depicted herein are fictitious. No association with any real company, organization, product, person or event is intended or should be inferred.

© 2019 Netsurion. All rights reserved. The names of actual companies and products mentioned herein may be the trademarks of their respective owners.

Table of Contents

1. Overview.....	3
2. Prerequisites.....	3
3. Configuring KnowBe4 to forward logs to EventTracker.....	3
3.1 Collecting API key	3
3.2 Forwarding logs to EventTracker.....	4

1. Overview

KnowBe4 is a platform for security awareness training and simulated phishing attacks that helps you manage the ongoing problem of social engineering, spear phishing, and ransomware attacks.

KnowBe4 can be integrated with EventTracker using API. EventTracker KP for KnowBe4 will help, checking the user security standards like phishing security, risk score, and phish prone percentage. The EventTracker dashboard will help you to visualize the user security awareness training status.

2. Prerequisites

Admin privileges for **KnowBe4** web console.

Note: Reporting APIs are available only to customers at **Platinum** and **Diamond** subscription levels.

3. Configuring KnowBe4 to forward logs to EventTracker

3.1 Collecting API key

1. Please login into your [KnowBe4 web console](#) with admin privileges.
2. Navigate to **Account Settings**.

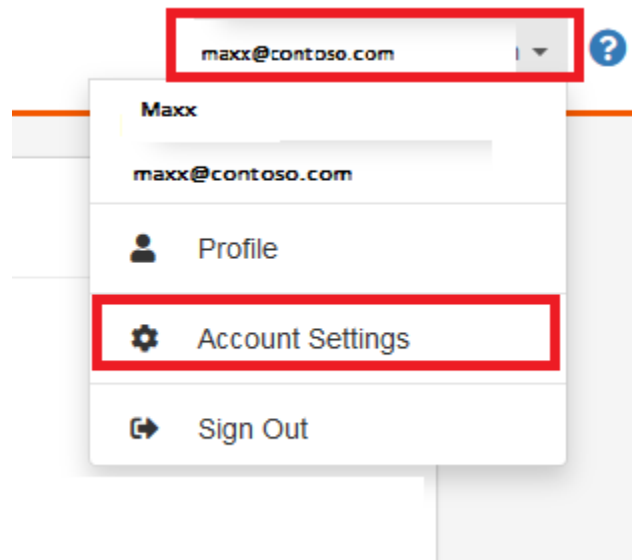


Figure 1

3. Search for **User Event API > API Key** section.
 - **Name:** Please enter name as **EventTracker API**.
 - Click the **+Create API Key** button.

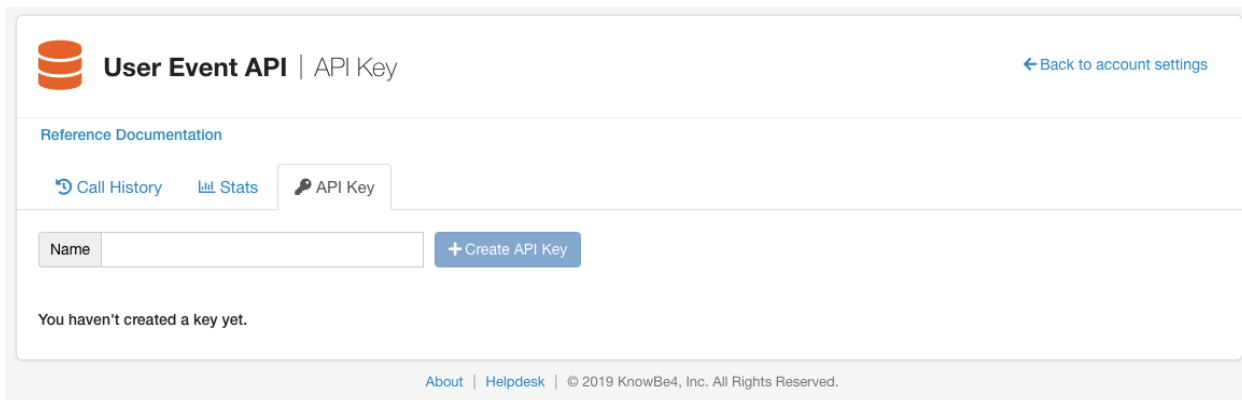


Figure 2

4. Please download/copy the EventTracker API key.

3.2 Forwarding logs to EventTracker

1. Contact the EventTracker Support team and get the “**KnowBe4 Integrator**” executable file.
2. Once the executable application is received, right-click on the file and select “**Run as Administrator**”.

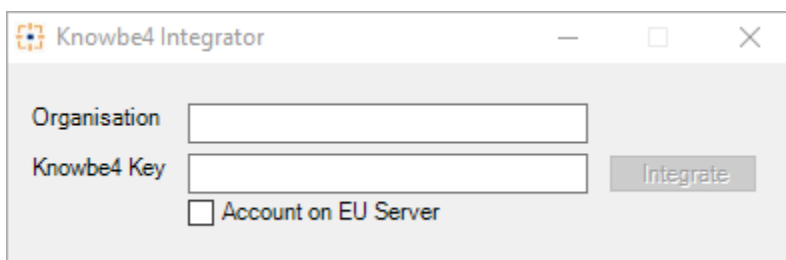


Figure 3

3. Please enter the **organization** name, the **Knowbe4 API key** and by default **Account on US server** selected or select **Account on EU server** if server existed in EU and click on the **Integrate** button.

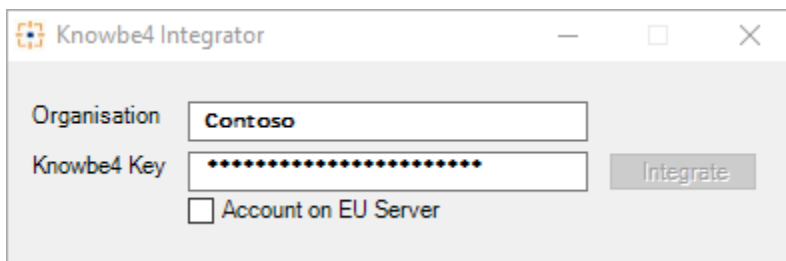


Figure 4

4. Click on the “**OK**” button to complete the integration process.

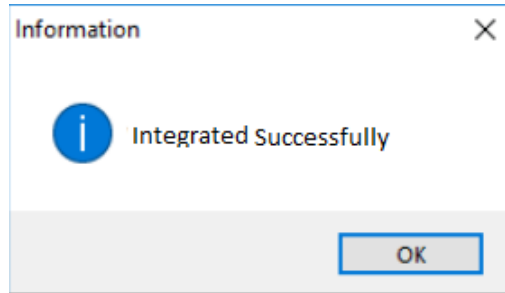


Figure 5