

Integrate Ali Cloud

EventTracker v8.x and above

Abstract

EventTracker allows you to effectively manage your systems and provides operational efficiencies – reducing IT costs and freeing resources for other duties that increase the business value of your organization. EventTracker’s built-in knowledge base enables you to gather business intelligence providing increased security, performance, availability, and reliability of your systems.

Scope

The configurations detailed in this guide are consistent with EventTracker Enterprise version 8.x and later, and Ali Cloud.

Audience

EventTracker users, who wish to monitor Ali Cloud.

Table of Contents

Abstract	1
Scope	1
Audience	1
Introduction.....	3
Getting API keys.....	3
Enabling Action Trail.....	3
Integrate Ali Cloud with EventTracker	5
EventTracker Knowledge Pack	6
Category	6
Flex Reports	6
Dashboards.....	9
Import Ali Cloud Knowledge Pack into EventTracker.....	10
Category	11
Token Templates	13
Flex Reports.....	13
Dashlets	15
Verify Ali Cloud knowledge pack in EventTracker	18
Categories.....	18
Token Templates	19
Flex Reports.....	20
Dashlets	21

Introduction

Alibaba Cloud offers cloud services that are available on a pay-as-you-go basis and include data storage, relational databases, big-data processing, Anti-DDoS protection and content delivery networks (CDN).

EventTracker helps to monitor events from Ali Cloud. Its knowledge objects and flex reports will help you to analyze action trail, OSS events in detail.

Getting API keys

- Logon to the Ali Cloud console.
- Log on to the [RAM console](#).
- Click **User** on the left-side navigation pane.
- Click a target user to go to the user details page.
- Click **Create AccessKey** in the **User AccessKey** area.
- In the Create User Access Key dialog box, expand **AccessKey Details** to view the AccessKeyID and AccessKeySecret. Click **Save AccessKey Information** to download the AccessKey.

Enabling Action Trail

- Log on to the ActionTrailconsole.
- Click Trail list in the left-side navigation pane.

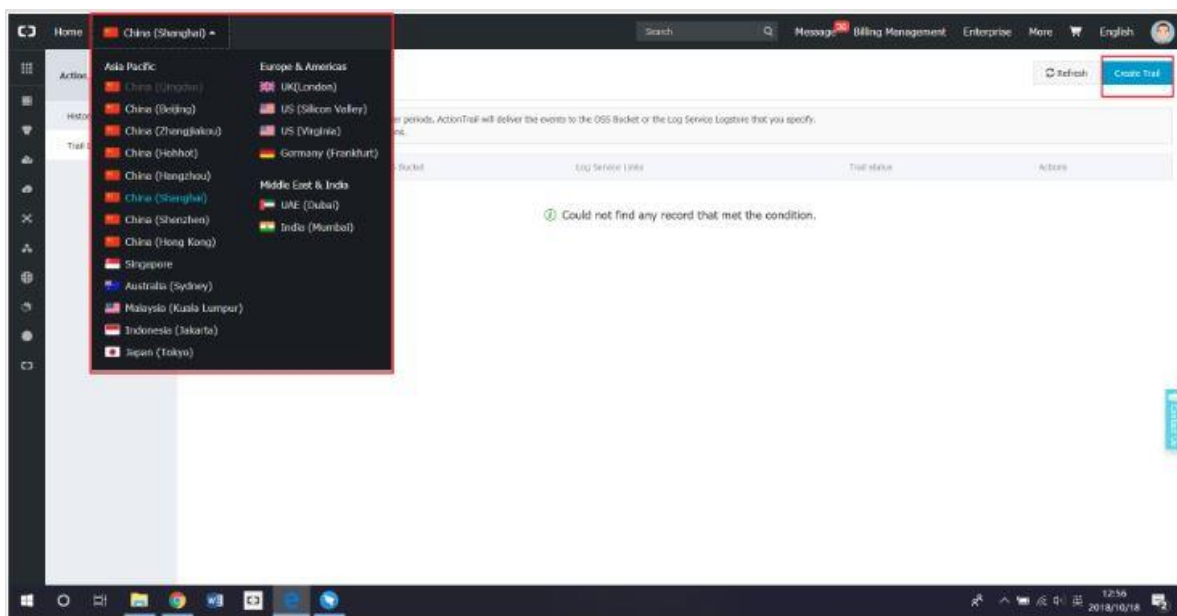


Figure 1

- Select a region, and then click **Create Trail**.

The screenshot shows the 'Create Trail' interface. The trail name is 'at-product-account-audit'. The 'Event Type' is set to 'Write'. Under 'Delivery to OSS Bucket', 'Create new OSS Bucket?' is 'No'. Under 'Delivery to Log Service', the region is 'China (Shanghai)' and the project is 'at-product-account-audit'. The 'Enable logging' toggle is on. The 'Submit' button is highlighted.

Figure 2

NOTE: The selected region then becomes the home region of the trail.

- Enter a Trail name.

The screenshot shows the 'Create Trail' interface. The trail name is 'at-product-account-audit'. The 'Event Type' is set to 'All'. Under 'Delivery to OSS Bucket', 'Create new OSS Bucket?' is 'Yes', 'OSS Bucket' is 'at-product-account-audit', and 'Log file prefix' is 'secloud'. Under 'Delivery to Log Service', the region is 'China (Shanghai)' and the project is 'Please input a new or existing project'. The 'Enable logging' toggle is on. The 'Submit' button is highlighted.

Figure 3

- You can choose to ship audit events to Log Service or an OSS Bucket.
- Log Service: ActionTrail automatically creates a Logstore named `actiontrail_trail` name, index, and chart, and saves the trail event in JSON format.

Integrate Ali Cloud with EventTracker

- Locate the integrator setup and launch **Integrate Ali Cloud.bat** file as Administrator.
- The integrator will check for pre-requisites, if all the pre-requisites are installed **Next** button is enabled.
- If the pre-requisites are not installed, please install the same to proceed further.

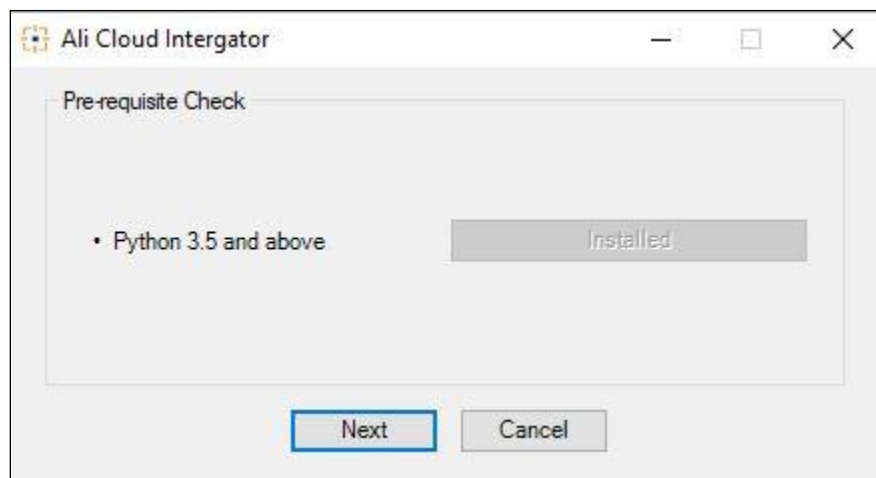


Figure 4

- Click **Next**.

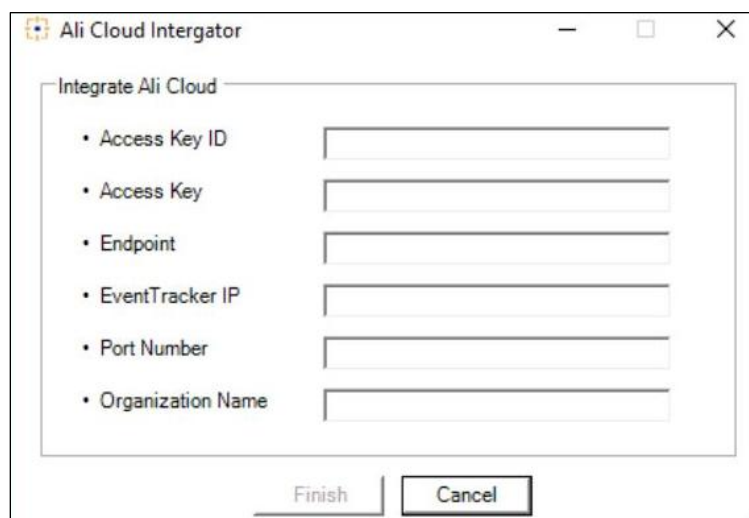


Figure 5

- Please provide the requested details.
 - ✓ Access Key ID and Access Key can be found from the above created API keys.
 - ✓ Endpoint is the Log Service location endpoint. Please refer [here](#).
 - ✓ EventTracker IP and Port is the IP Address and Port of the EventTracker Manger.
 - ✓ Organization Name is your Company name.
- Click **Finish**.
- A configuration successful message is prompted if the configuration is successful.



Figure 6

EventTracker Knowledge Pack

Once logs are received by EventTracker manager, Knowledge Packs can be configured into EventTracker. The following Knowledge Packs are available in EventTracker Enterprise to support Ali Cloud.

Category

- **Ali Cloud – Action Trail Events:** This Category gives information about the Action Trail Events such as API calls and Sign in events.
- **Ali Cloud – Database Events:** This Category gives information about the Database activities.
- **Ali Cloud – Operation Events:** This Category gives information about the Operational events.
- **Ali Cloud - OSS Access Events:** This Category gives information about the OSS Access Events.
- **Ali Cloud - OSS Metering:** This Category gives information about the Metering Events.

Flex Reports

- **Ali Cloud – Sign in Events:** This Report gives information about all the Sign in activities.

LogTime	Computer	User Name	User Type	User Details	Source IP Address	Service Name	EventSource	Account ID	Principal ID	Region
03/13/2019 03:31:01 PM	R155-VM30(172.28.100.35-SYSLOG)	root	root-account	gummbas@eventtracker.com	10.98.4.18	AasCustomer	SYSLOG user	5.57665E+15	5.57665E+15	cn-hangzhou
03/13/2019 03:31:01 PM	R155-VM30(172.28.100.35-SYSLOG)	root	root-account	gummbas@eventtracker.com	10.98.4.18	AasCustomer	SYSLOG user	5.57665E+15	5.57665E+15	cn-hangzhou
03/13/2019 03:32:18 PM	R155-VM30(172.28.100.35-SYSLOG)	root	root-account	gummbas@eventtracker.com	10.98.4.18	AasCustomer	SYSLOG user	5.57665E+15	5.57665E+15	cn-hangzhou
03/13/2019 03:32:18 PM	R155-VM30(172.28.100.35-SYSLOG)	root	root-account	gummbas@eventtracker.com	10.98.4.18	AasCustomer	SYSLOG user	5.57665E+15	5.57665E+15	cn-hangzhou
03/13/2019 05:49:09 PM	R155-VM30(172.28.100.35-SYSLOG)	root	root-account	gummbas@eventtracker.com	10.98.4.18	AasCustomer	SYSLOG user	5.57665E+15	5.57665E+15	cn-hangzhou
03/13/2019 05:50:00 PM	R155-VM30(172.28.100.35-SYSLOG)	root	root-account	gummbas@eventtracker.com	10.98.4.18	AasCustomer	SYSLOG user	5.57665E+15	5.57665E+15	cn-hangzhou

Figure 7

- **Ali Cloud - OSS Access Events:** This Report gives information about the OSS Access Events.
- **Ali Cloud –API calls Details:** This Report gives information about the API calls.

User Name	User Type	Source IP Address	Service Name	Event Type	Principal ID	Account ID	API Version	Host ID	Region	Request ID	User Agent
web_user	ram-user	192.126.52.18	Ons	ApiCall	257415345284189647	1254098803125627	2017-09-18	ons-cn-shanghai.aliyuncs.com	cn-shanghai	E6F9ED95-2D2D-42DA-AD6B-FA5AA2F1F8CD	Java/1.8.0_144
web_user	ram-user	192.126.52.18	Ons	ApiCall	257415345284189647	1254098803125627	2017-09-18	ons-cn-shanghai.aliyuncs.com	cn-shanghai	A6DAF7B9-13DA-4A4B-9B07-A73E2EB786D	Java/1.8.0_144
web_user	ram-user	192.126.52.18	Ons	ApiCall	257415345284189647	1254098803125627	2017-09-18	ons-cn-shanghai.aliyuncs.com	cn-shanghai	19F399AE-F2D7-40A5-9EE0-97FC6DFD3530	Java/1.8.0_144
web_user	ram-user	192.126.52.18	Ons	ApiCall	257415345284189647	1254098803125627	2017-09-18	ons-cn-shanghai.aliyuncs.com	cn-shanghai	E83169FA-3581-40F5-911B-9E73B78AF589	Java/1.8.0_144
web_user	ram-user	192.126.52.18	Ons	ApiCall	257415345284189647	1254098803125627	2017-09-18	ons-cn-shanghai.aliyuncs.com	cn-shanghai	F54F954B-3097-47EC-9ADF-9B64EBF26DAB	Java/1.8.0_144
Contoso	ram-user	192.126.52.18	Ons	ApiCall	260709745283675603	1254098803125627	2017-09-18	ons-cn-shanghai.aliyuncs.com	cn-shanghai	D57F1859-F27F-4883-84F8-01570797CEB1	Java/1.8.0_144
Contoso	ram-user	192.126.52.18	Ons	ApiCall	260709745283675603	1254098803125627	2017-09-18	ons-cn-shanghai.aliyuncs.com	cn-shanghai	7F5ABFA7-1C1E-4A19-92CD-EB8FA2ACF0F	Java/1.8.0_144
nuskindev	ram-user	192.126.52.18	Ons	ApiCall	220034225248139474	1254098803125627	2017-09-18	ons-cn-shanghai.aliyuncs.com	cn-shanghai	4DF7D4B7-9689-4E6B-A013-1393D13E4E29	Java/1.8.0_144
Contoso	ram-user	192.126.52.18	Ons	ApiCall	260709745283675603	1254098803125627	2017-09-18	ons-cn-shanghai.aliyuncs.com	cn-shanghai	75578A92-E558-480C-AEC9-0730B721D379	Java/1.8.0_144
web_user	ram-user	192.126.52.18	Ons	ApiCall	257415345284189647	1254098803125627	2017-09-18	ons-cn-shanghai.aliyuncs.com	cn-shanghai	F711075A-5557-4BCD-8F8D-8669E05468E	Java/1.8.0_144
web_user	ram-user	192.126.52.18	Ons	ApiCall	257415345284189647	1254098803125627	2017-09-18	ons-cn-shanghai.aliyuncs.com	cn-shanghai	AF57DB51-885E-4A00-8525-AE9DBBE16948	Java/1.8.0_144
web_user	ram-user	192.126.52.18	Ons	ApiCall	257415345284189647	1254098803125627	2017-09-18	ons-cn-shanghai.aliyuncs.com	cn-shanghai	E44439DE-147C-4A41-AC67-6923A61361E3	Java/1.8.0_144
nuskindev	ram-user	192.126.52.18	Ons	ApiCall	220034225248139474	1254098803125627	2017-09-18	ons-cn-shanghai.aliyuncs.com	cn-shanghai	BBE60670-BEA2-4F1B-BD16-C388A449955	Java/1.8.0_144
web_user	ram-user	192.126.52.18	Ons	ApiCall	257415345284189647	1254098803125627	2017-09-18	ons-cn-shanghai.aliyuncs.com	cn-shanghai	C5BF3F66-7776-4463-BFC0-AC7F045C3A7E	Java/1.8.0_144
web_user	ram-user	192.126.52.18	Ons	ApiCall	257415345284189647	1254098803125627	2017-09-18	ons-cn-shanghai.aliyuncs.com	cn-shanghai	06715F53-9EB8-4CD3-97B9-776BA0E32F61	Java/1.8.0_144
Contoso	ram-user	192.126.52.18	Ons	ApiCall	260709745283675603	1254098803125627	2017-09-18	ons-cn-shanghai.aliyuncs.com	cn-shanghai	F6862041-05F3-48D9-9EC3-DF8C0D13F63A	Java/1.8.0_144
web_user	ram-user	192.126.52.18	Ons	ApiCall	257415345284189647	1254098803125627	2017-09-18	ons-cn-shanghai.aliyuncs.com	cn-shanghai	52A39D269954	Java/1.8.0_144
web_user	ram-user	192.126.52.18	Ons	ApiCall	257415345284189647	1254098803125627	2017-09-18	ons-cn-shanghai.aliyuncs.com	cn-shanghai	C0C90EDE-99A2-4C56-9D33-4A522C90A683	Java/1.8.0_144
web_user	ram-user	192.126.52.18	Ons	ApiCall	257415345284189647	1254098803125627	2017-09-18	ons-cn-shanghai.aliyuncs.com	cn-shanghai	E0D4724B-9342-45D8-9937-27AF93A7DA7C	Java/1.8.0_144
web_user	ram-user	192.126.52.18	Ons	ApiCall	257415345284189647	1254098803125627	2017-09-18	ons-cn-shanghai.aliyuncs.com	cn-shanghai	9F03A99A-0B3F-442A-9A1E-682689B0BAE	Java/1.8.0_144
web_user	ram-user	192.126.52.18	Ons	ApiCall	257415345284189647	1254098803125627	2017-09-18	ons-cn-shanghai.aliyuncs.com	cn-shanghai	6B58AC0A-DEF0-4B24-98DC-CFC0C003F8E1	Java/1.8.0_144
web_user	ram-user	192.126.52.18	Ons	ApiCall	257415345284189647	1254098803125627	2017-09-18	ons-cn-shanghai.aliyuncs.com	cn-shanghai	6D79859F-49C0-4CE1-94B9-BC3FAC6565B4	Java/1.8.0_144
web_user	ram-user	192.126.52.18	Ons	ApiCall	257415345284189647	1254098803125627	2017-09-18	ons-cn-shanghai.aliyuncs.com	cn-shanghai	02B7AAC7-FE5B-4E66-B958-60481542235C	Java/1.8.0_144

Figure 8

- **Ali Cloud – Database Events:** This Report gives information about the Database activities.

LogTime	Computer	User Name	Name	Topic	Table Name	Instance ID	Source IP Address	Source Port	SQL Type	SQL Query
03/21/2019 01:38:35 PM	R155-VM30V192.28.100.35-SYSLOG	Web User	Web User	drds_audit_log_drdsxzy7v1wd3		drdsxzy7v1wd3u	192.30.24.208	54756	Select	select @@session.tx_read_only
03/21/2019 01:38:35 PM	R155-VM30V192.28.100.35-SYSLOG	Web User	Web User	drds_audit_log_drdsxzy7v1wd3	in_logistics_trace_record	drdsxzy7v1wd3u	192.30.8.208	56106	Select	select @@session.tx_read_only
03/21/2019 01:38:35 PM	R155-VM30V192.28.100.35-SYSLOG	Web User	Web User	drds_audit_log_drdsxzy7v1wd3		drdsxzy7v1wd3u	192.30.8.208	56106	Set	SET autocommit=1
03/21/2019 01:38:35 PM	R155-VM30V192.28.100.35-SYSLOG	Web User	Web User	drds_audit_log_drdsxzy7v1wd3	in_logistics_trace_record	drdsxzy7v1wd3u	192.30.8.208	56106	Other	commit
03/21/2019 01:38:35 PM	R155-VM30V192.28.100.35-SYSLOG	Web User	Web User	drds_audit_log_drdsxzy7v1wd3		drdsxzy7v1wd3u	192.30.8.208	56106	Select	select @@session.tx_read_only
03/21/2019 01:38:35 PM	R155-VM30V192.28.100.35-SYSLOG	Web User	Web User	drds_audit_log_drdsxzy7v1wd3	in_logistics_trace_record	drdsxzy7v1wd3u	192.30.8.208	56106	Set	SET autocommit=0
03/21/2019 01:38:35 PM	R155-VM30V192.28.100.35-SYSLOG	Web User	Web User	drds_audit_log_drdsxzy7v1wd3		drdsxzy7v1wd3u	192.30.24.208	54756	Select	select @@session.tx_read_only
03/21/2019 01:38:35 PM	R155-VM30V192.28.100.35-SYSLOG	Web User	Web User	drds_audit_log_drdsxzy7v1wd3	in_logistics_trace_record	drdsxzy7v1wd3u	192.30.24.208	54756	Set	SET autocommit=1
03/21/2019 01:38:35 PM	R155-VM30V192.28.100.35-SYSLOG	Web User	Web User	drds_audit_log_drdsxzy7v1wd3		drdsxzy7v1wd3u	192.30.24.208	54756	Select	select @@session.tx_read_only
03/21/2019 01:38:35 PM	R155-VM30V192.28.100.35-SYSLOG	Web User	Web User	drds_audit_log_drdsxzy7v1wd3	in_logistics_trace_record	drdsxzy7v1wd3u	192.30.24.208	54756	Other	commit
03/21/2019 01:38:35 PM	R155-VM30V192.28.100.35-SYSLOG	Web User	Web User	drds_audit_log_drdsxzy7v1wd3		drdsxzy7v1wd3u	192.30.8.208	56106	Select	select @@session.tx_read_only
03/21/2019 01:38:35 PM	R155-VM30V192.28.100.35-SYSLOG	Web User	Web User	drds_audit_log_drdsxzy7v1wd3		drdsxzy7v1wd3u	192.30.8.208	56106	Set	SET autocommit=1
03/21/2019 01:38:35 PM	R155-VM30V192.28.100.35-SYSLOG	Web User	Web User	drds_audit_log_drdsxzy7v1wd3	in_logistics_trace_record	drdsxzy7v1wd3u	192.30.24.208	54756	Set	SET autocommit=0
03/21/2019 01:38:35 PM	R155-VM30V192.28.100.35-SYSLOG	Web User	Web User	drds_audit_log_drdsxzy7v1wd3		drdsxzy7v1wd3u	192.30.24.208	54756	Select	select @@session.tx_read_only
03/21/2019 01:38:35 PM	R155-VM30V192.28.100.35-SYSLOG	Web User	Web User	drds_audit_log_drdsxzy7v1wd3	in_logistics_trace_record	drdsxzy7v1wd3u	192.30.24.208	54756	Set	SET autocommit=1
03/21/2019 01:38:35 PM	R155-VM30V192.28.100.35-SYSLOG	Web User	Web User	drds_audit_log_drdsxzy7v1wd3		drdsxzy7v1wd3u	192.30.8.208	56106	Other	commit
03/21/2019 01:38:35 PM	R155-VM30V192.28.100.35-SYSLOG	Web User	Web User	drds_audit_log_drdsxzy7v1wd3		drdsxzy7v1wd3u	192.30.24.208	54756	Other	commit
03/21/2019 01:38:35 PM	R155-VM30V192.28.100.35-SYSLOG	Web User	Web User	drds_audit_log_drdsxzy7v1wd3	in_logistics_trace_record	drdsxzy7v1wd3u	192.30.8.208	56106	Select	select @@session.tx_read_only
03/21/2019 01:38:35 PM	R155-VM30V192.28.100.35-SYSLOG	Web User	Web User	drds_audit_log_drdsxzy7v1wd3		drdsxzy7v1wd3u	192.30.24.208	54756	Other	commit

Figure 8

- **Ali Cloud – Operation Events:** This Report gives information about the Operational events.

LogTime	Computer	Project	LogStore	Method	Source IP Address	Request ID	API Version
03/21/2019 01:38:41 PM	R155-VM30V192.28.100.35-SYSLOG	public-environment	nuskin-search-indexbuilder	PostLogStoreLogs	192.30.104.174	5C91A7B1AAEA20EFD81FA23E	0.6.0
03/21/2019 01:38:41 PM	R155-VM30V192.28.100.35-SYSLOG	nuskin-cms-nginx-stage	nuskin-cms-nginx-stage	PostLogStoreLogs	192.30.112.100	5C91A7AF83FB8BA266D44549	0.6.0
03/21/2019 01:38:41 PM	R155-VM30V192.28.100.35-SYSLOG	nuskin-cms-nginx-stage	nuskin-cms-nginx-stage	PostLogStoreLogs	192.30.96.212	5C91A7AFC63F665A99D20386	0.6.0
03/21/2019 01:38:41 PM	R155-VM30V192.28.100.35-SYSLOG	nuskin-cms-nginx-stage	nuskin-cms-nginx-stage	PostLogStoreLogs	192.30.112.100	5C91A7ACEEC9E8908A2B7F4	0.6.0
03/21/2019 01:38:41 PM	R155-VM30V192.28.100.35-SYSLOG	public-environment	nuskin-search-indexbuilder	PostLogStoreLogs	192.30.104.174	5C91A7AEAB17FA2AC6D7ACA3	0.6.0
03/21/2019 01:38:41 PM	R155-VM30V192.28.100.35-SYSLOG	nuskin-cms-nginx-stage	nuskin-cms-nginx-stage	PostLogStoreLogs	192.30.96.212	5C91A7A99BF3F8D20FDF982D	0.6.0
03/21/2019 01:38:41 PM	R155-VM30V192.28.100.35-SYSLOG	public-environment	nuskin-search-indexbuilder	PostLogStoreLogs	192.30.104.174	5C91A7AB09F29462AC8ED3A1	0.6.0
03/21/2019 01:38:41 PM	R155-VM30V192.28.100.35-SYSLOG	nuskin-cms-nginx-stage	nuskin-cms-nginx-stage	PostLogStoreLogs	192.30.96.212	5C91A7B8AAEA20EFD81FAD52	0.6.0
03/21/2019 01:38:41 PM	R155-VM30V192.28.100.35-SYSLOG	public-environment	nuskin-center-trade	PostLogStoreLogs	192.30.104.171	5C91A7679BF3F8F20F8F999D	0.6.0
03/21/2019 01:38:41 PM	R155-VM30V192.28.100.35-SYSLOG	nuskin-cms-nginx-stage	nuskin-cms-nginx-stage	PostLogStoreLogs	192.30.96.212	5C91A77047F5484A559D8749	0.6.0
03/21/2019 01:38:41 PM	R155-VM30V192.28.100.35-SYSLOG	public-environment	nuskin-search-indexbuilder	PostLogStoreLogs	192.30.104.174	5C91A770FB4362ED20E338B6	0.6.0
03/21/2019 01:38:41 PM	R155-VM30V192.28.100.35-SYSLOG	nuskin-cms-nginx-stage	nuskin-cms-nginx-stage	PostLogStoreLogs	192.30.112.100	5C91A770AB17FA2DC632553E	0.6.0
03/21/2019 01:38:41 PM	R155-VM30V192.28.100.35-SYSLOG	public-environment	nuskin-comm	PostLogStoreLogs	192.30.104.164	5C91A76E677D38A96367D3	0.6.0
03/21/2019 01:38:41 PM	R155-VM30V192.28.100.35-SYSLOG	nuskin-cms-nginx-stage	nuskin-cms-nginx-stage	PostLogStoreLogs	192.30.96.212	5C91A76DAEE0FD518F037703	0.6.0
03/21/2019 01:38:41 PM	R155-VM30V192.28.100.35-SYSLOG	nuskin-cms-nginx-stage	nuskin-cms-nginx-stage	PostLogStoreLogs	192.30.112.100	5C91A76DC63F66B799D80F80	0.6.0
03/21/2019 01:38:41 PM	R155-VM30V192.28.100.35-SYSLOG	public-environment	nuskin-search-indexbuilder	PostLogStoreLogs	192.30.104.174	5C91A76D83FB8BB66F5FB4F	0.6.0
03/21/2019 01:38:41 PM	R155-VM30V192.28.100.35-SYSLOG	nuskin-cms-nginx-stage	nuskin-cms-nginx-stage	PostLogStoreLogs	192.30.96.212	5C91A76A1C7673C053D0D3D5	0.6.0
03/21/2019 01:38:41 PM	R155-VM30V192.28.100.35-SYSLOG	nuskin-cms-nginx-stage	nuskin-cms-nginx-stage	PostLogStoreLogs	192.30.96.212	5C91A75EABE8600FAAF9980B	0.6.0
03/21/2019 01:38:41 PM	R155-VM30V192.28.100.35-SYSLOG	public-environment	nuskin-search-indexbuilder	PostLogStoreLogs	192.30.104.174	5C91A76A09F29463ACAB01A5	0.6.0
03/21/2019 01:38:41 PM	R155-VM30V192.28.100.35-SYSLOG	nuskin-cms-nginx-stage	nuskin-cms-nginx-stage	PostLogStoreLogs	192.30.96.212	5C91A7738B58A875AC2CB769	0.6.0
03/21/2019 01:38:41 PM	R155-VM30V192.28.100.35-SYSLOG	nuskin-cms-nginx-stage	nuskin-cms-nginx-stage	PostLogStoreLogs	192.30.112.100	5C91A764D8BF641CBA3CF483	0.6.0
03/21/2019 01:38:41 PM	R155-VM30V192.28.100.35-SYSLOG	nuskin-cms-nginx-stage	nuskin-cms-nginx-stage	PostLogStoreLogs	192.30.112.100	5C91A76AAEE0FD536F5CBBE8	0.6.0

Figure 9

Dashboards

- **Ali Cloud – Console Sign in Events by UserName**



Figure 10

- **Ali Cloud – Console Sign in Events by Location**



Figure 11

- **Ali Cloud – Console Sign in Events by IP Address**



Figure 12

Import Ali Cloud Knowledge Pack into EventTracker

NOTE: Import knowledge pack items in the following sequence:

- Category
 - Token Templates
 - Flex Reports
 - Knowledge Objects
 - Dashboards
1. Launch **EventTracker Control Panel**.
 2. Double click **Export Import Utility**.

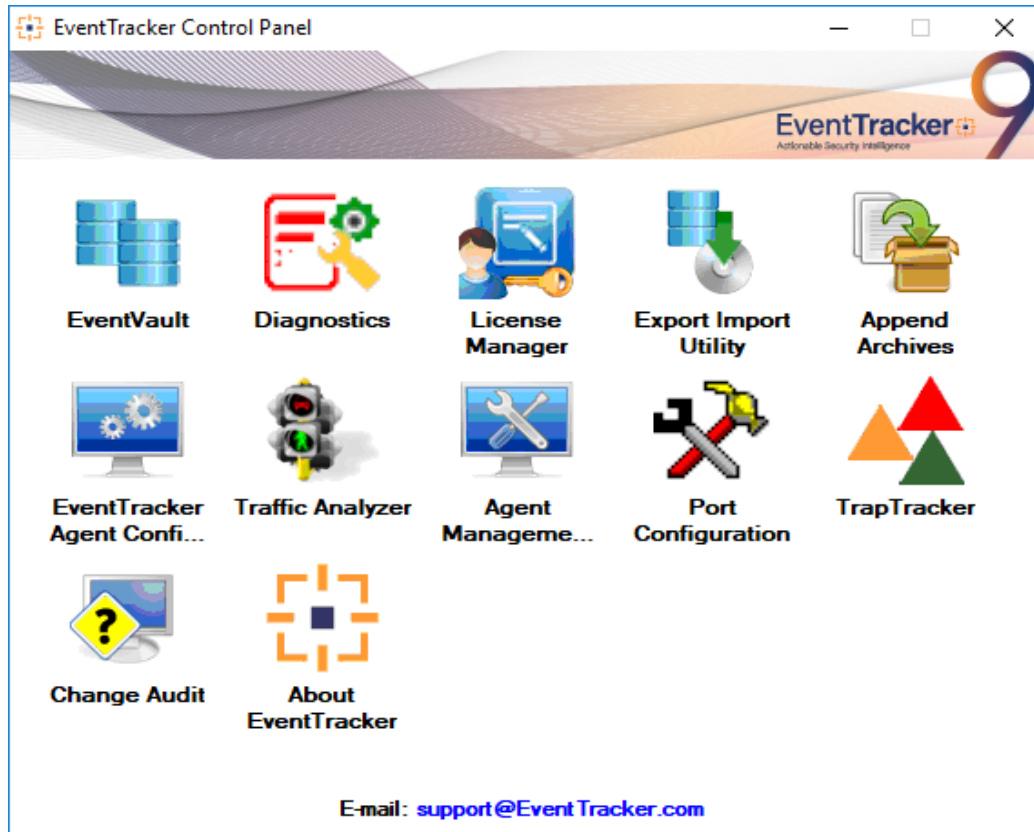
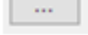


Figure 13

3. Click the **Import** tab.

Category

1. Click **Category** option, and then click the browse  button.

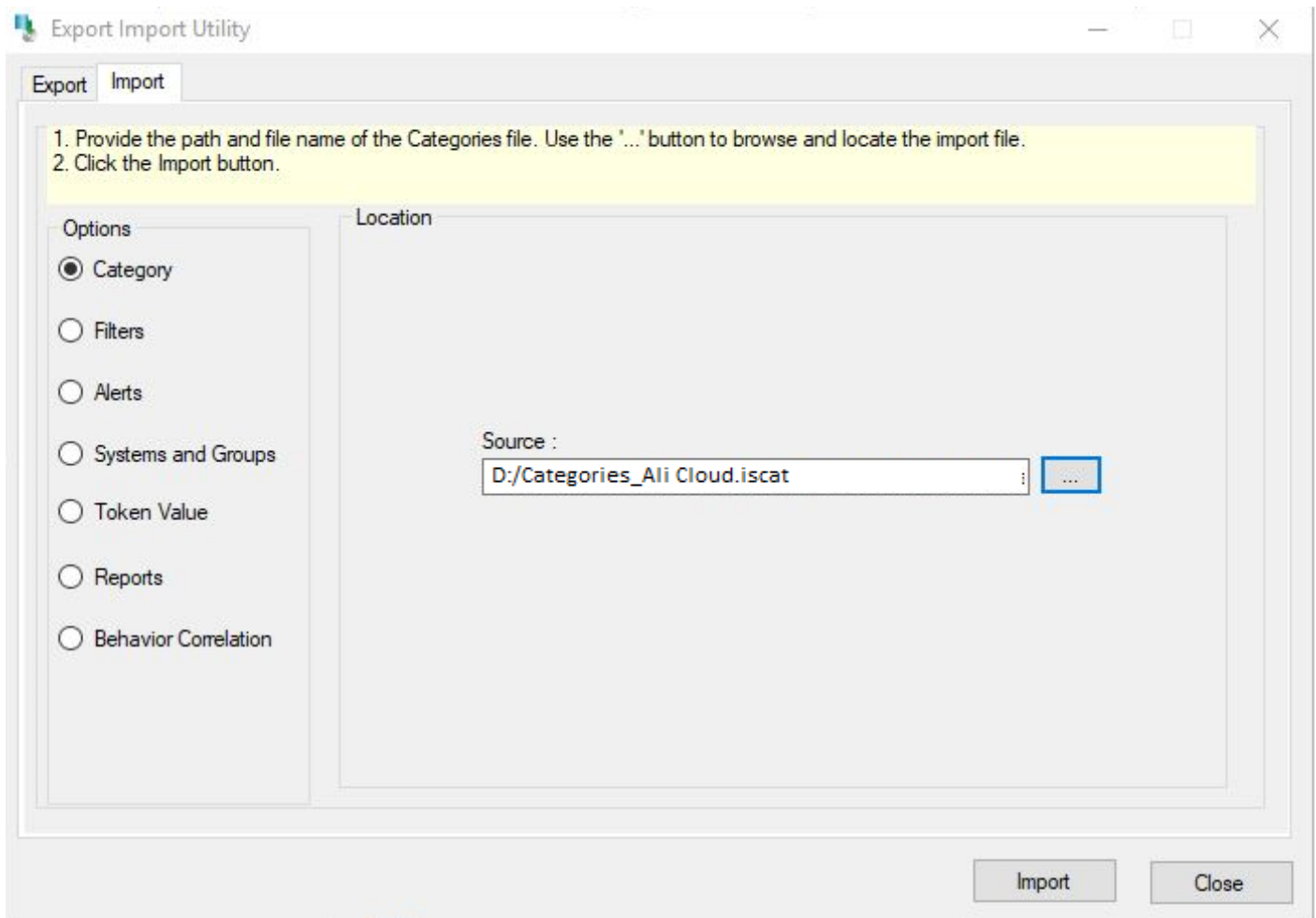


Figure 14

2. Locate **Category_Ali Cloud.iscat** file, and then click the **Open** button.
3. To import categories, click the **Import** button. EventTracker displays success message.

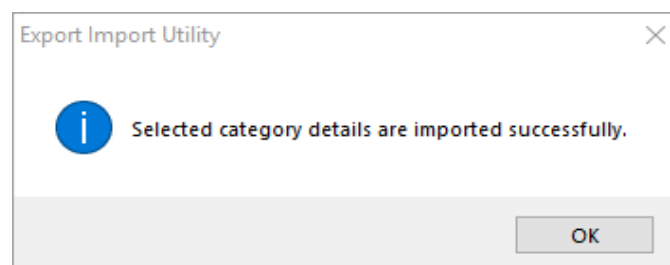



Figure 15

4. Click **OK**, and then click the **Close** button.

Token Templates

1. Click **Parsing rules** under **Admin** option in the EventTracker manager page.
2. Move to **Template** and click on import configuration  icon on the top right corner.
3. In the popup window, browse the file named **Token Template_Ali Cloud.ettd**.

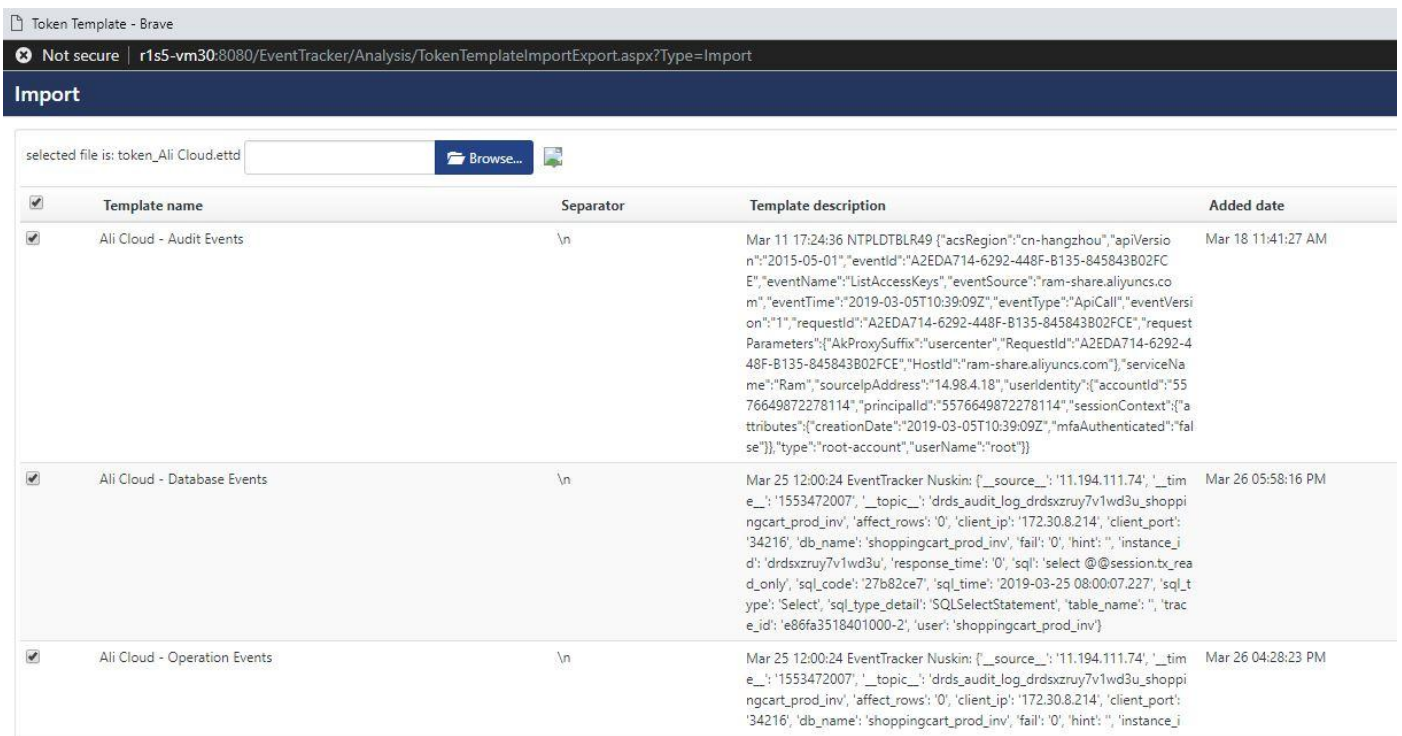



Figure 16

4. Now select all the check box and then click on  Import option.

Flex Reports

On EventTracker Control Panel,

1. Click **Reports** option, and select new (*.etcrx) from the option.

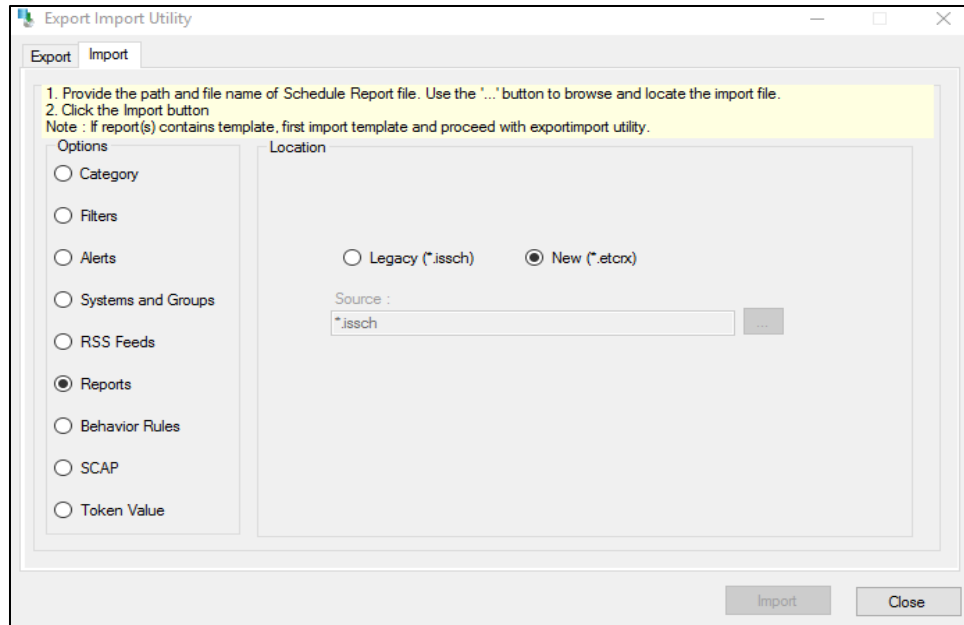


Figure 17

2. Locate the **Reports_Ali Cloud.etcrx** file and select all the check box.

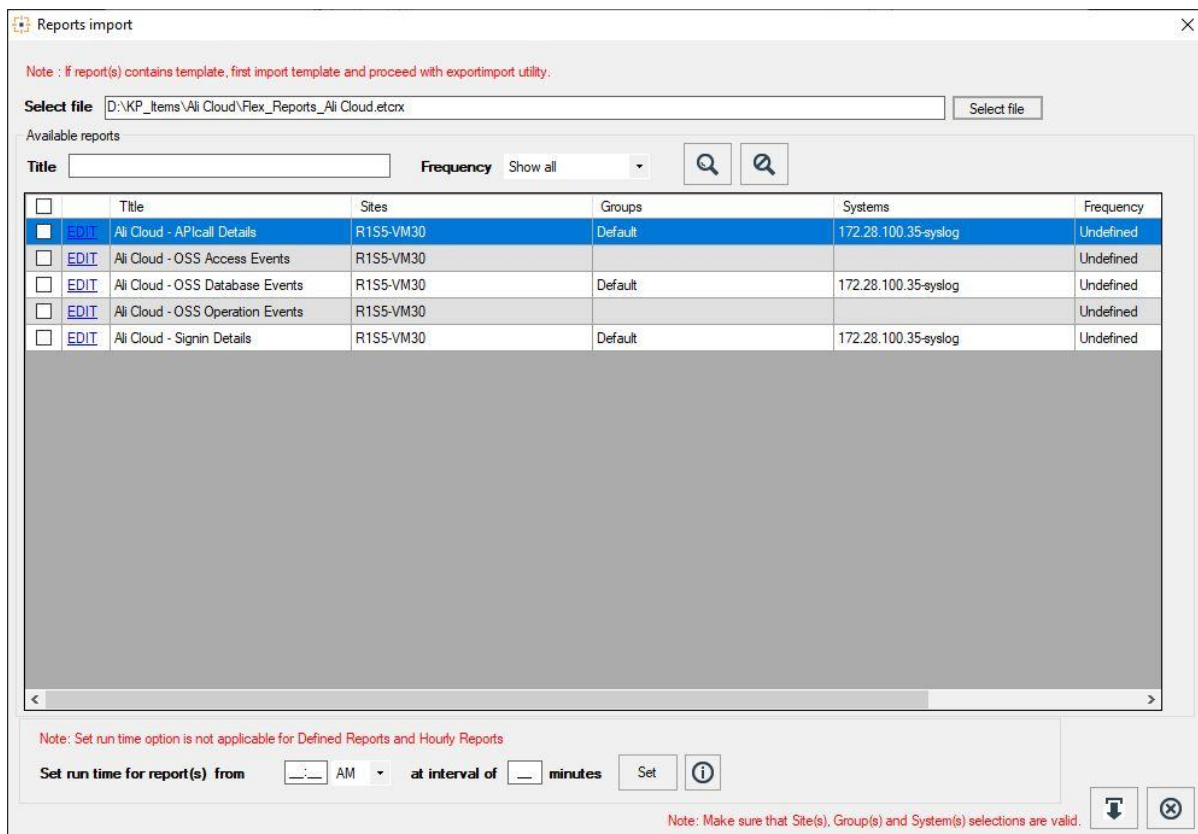


Figure 18

3. Click the **Import** button to import the reports. EventTracker displays success message.

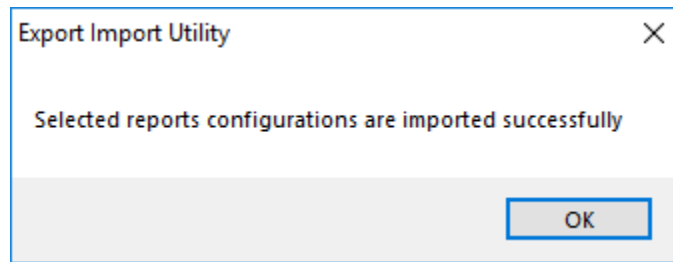


Figure 19

4. Click **OK**, and then click the **Close** button.

Dashlets

In EventTracker 9.0, we have added new feature which will help to import/export of dashlet. Following is the procedure to do that:

1. Login into EventTracker Enterprise Web console.

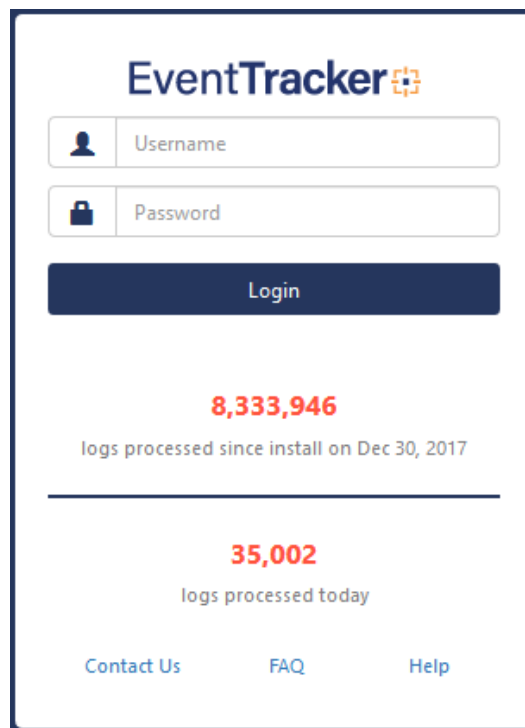


Figure 20

2. Go to **My Dashboard** option.

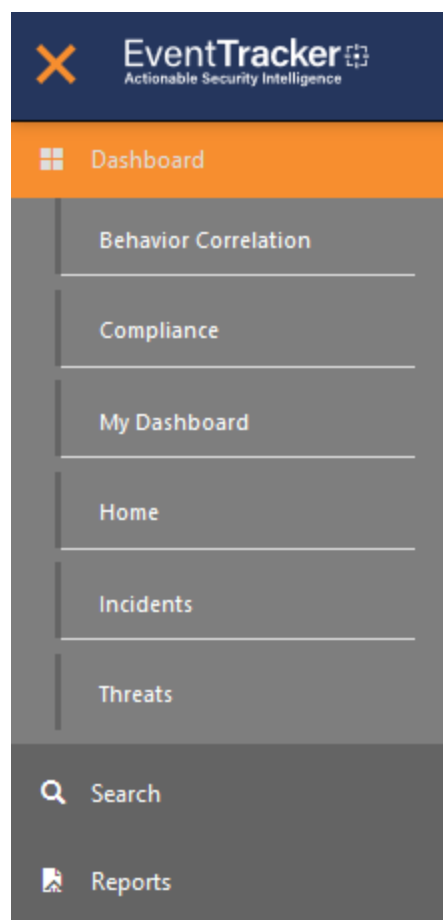


Figure 21

3. Click on import button and select **.etwd** File.



Figure 22

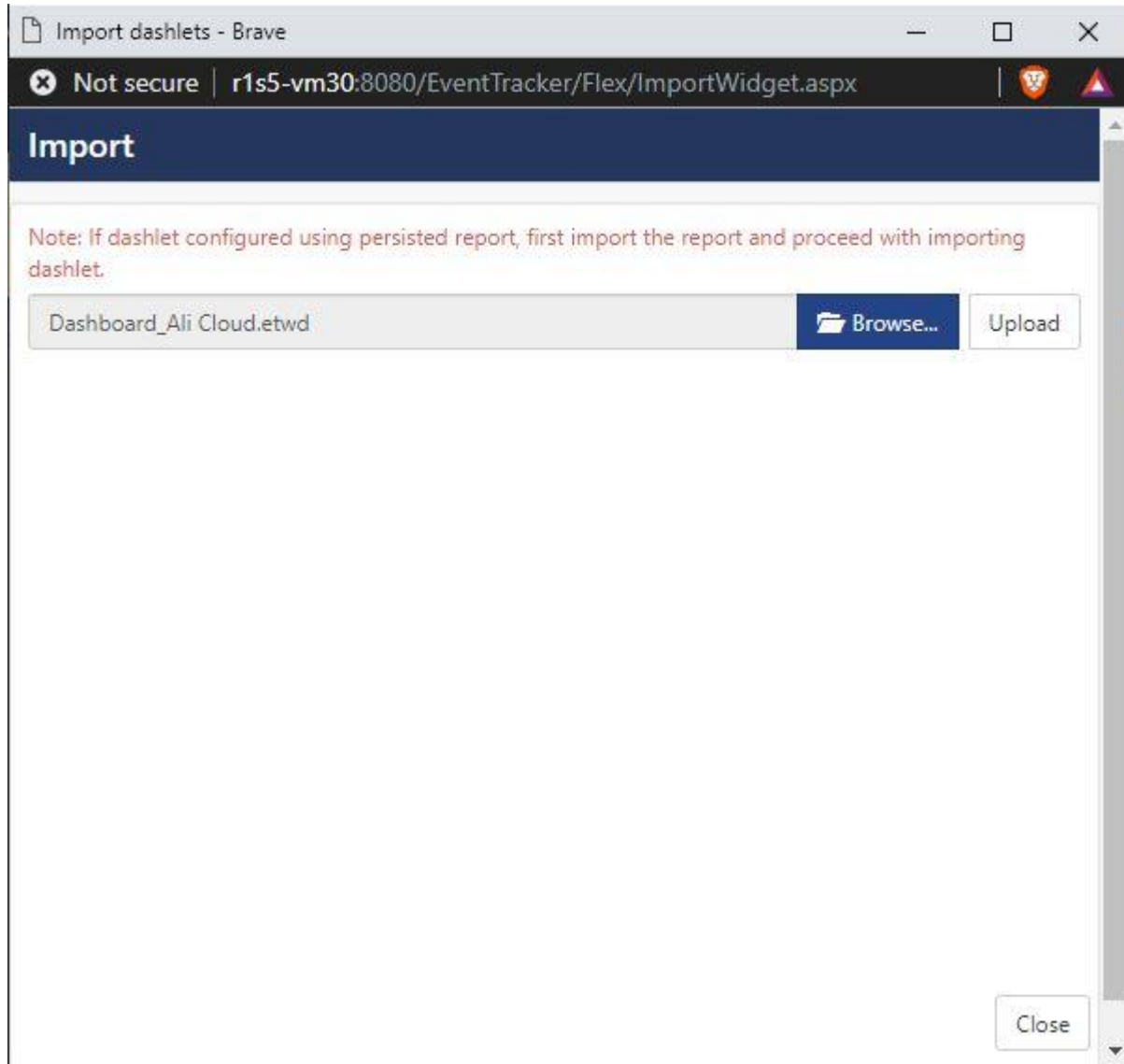


Figure 23

4. Click upload and select the Dashboards which you want to import.

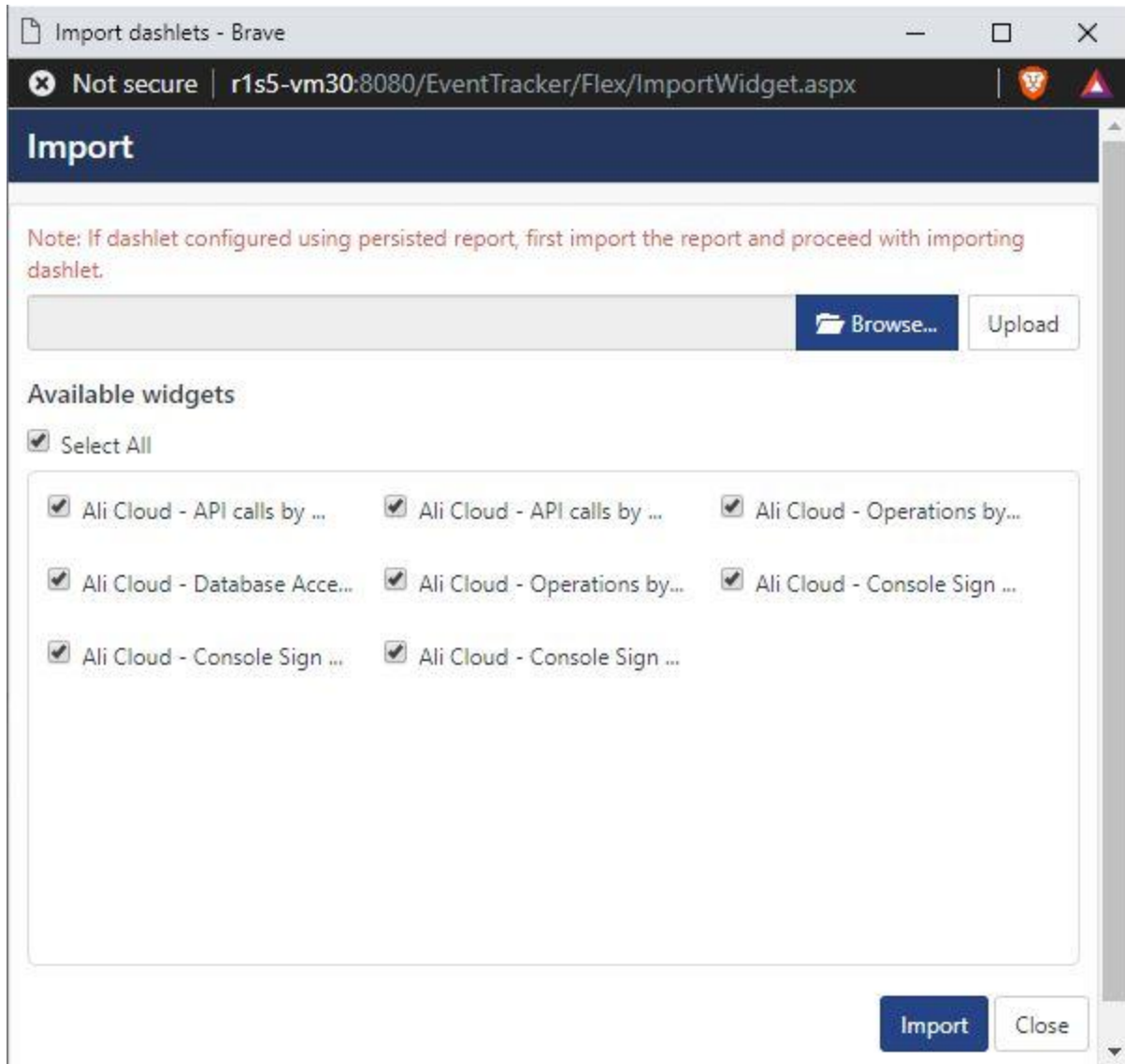


Figure 24

5. Click on **Import** button. It will upload all the selected dashboards.

Verify Ali Cloud knowledge pack in EventTracker

Categories

1. Logon to **EventTracker Enterprise**.
2. Click **Admin** dropdown, and then click **Categories**.

3. In **Category Tree** to view imported categories, scroll down and expand **Ali Cloud** group folder to view the imported categories.

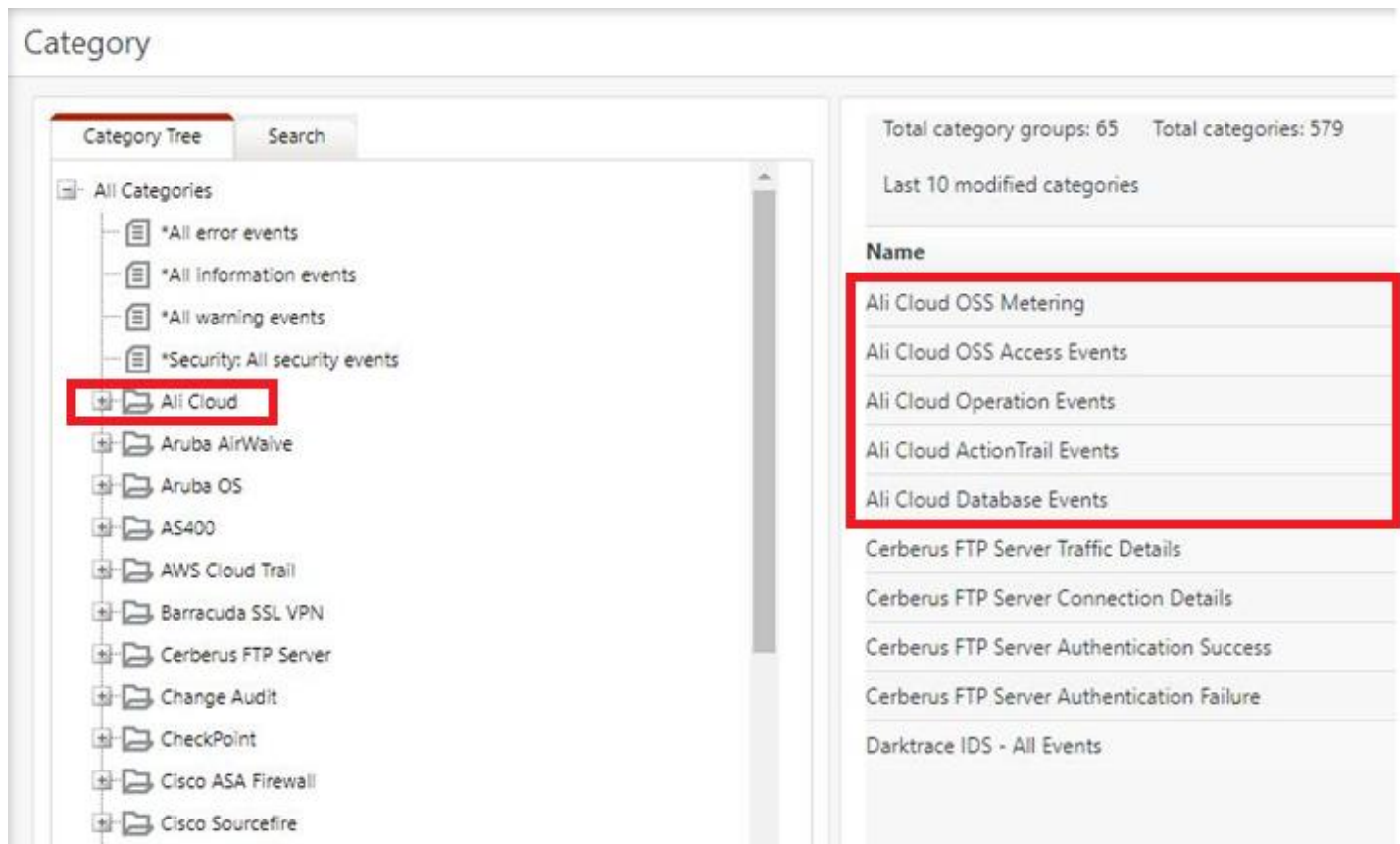


Figure 25

Token Templates

1. In the **EventTracker Enterprise** web interface, click the **Admin** dropdown, and then click **Parsing rules**.
2. On **Template** tab, click on the **Ali Cloud** group folder to view the imported Token Values.

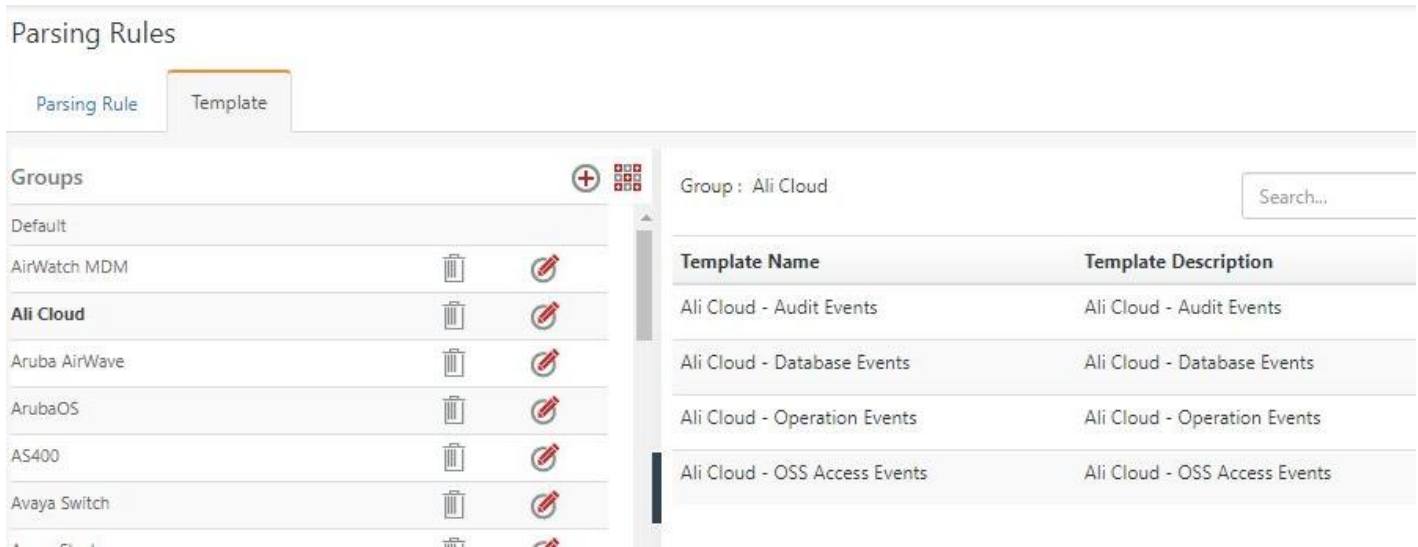


Figure 26

Flex Reports

1. In the **EventTracker Enterprise** web interface, click the **Reports** menu, and then select **Report Configuration**.

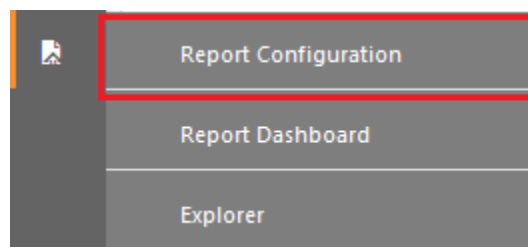


Figure 27

2. In **Reports Configuration** pane, select **Defined** option.
3. Click on the **Ali Cloud group** folder to view the imported Ali Cloud reports.

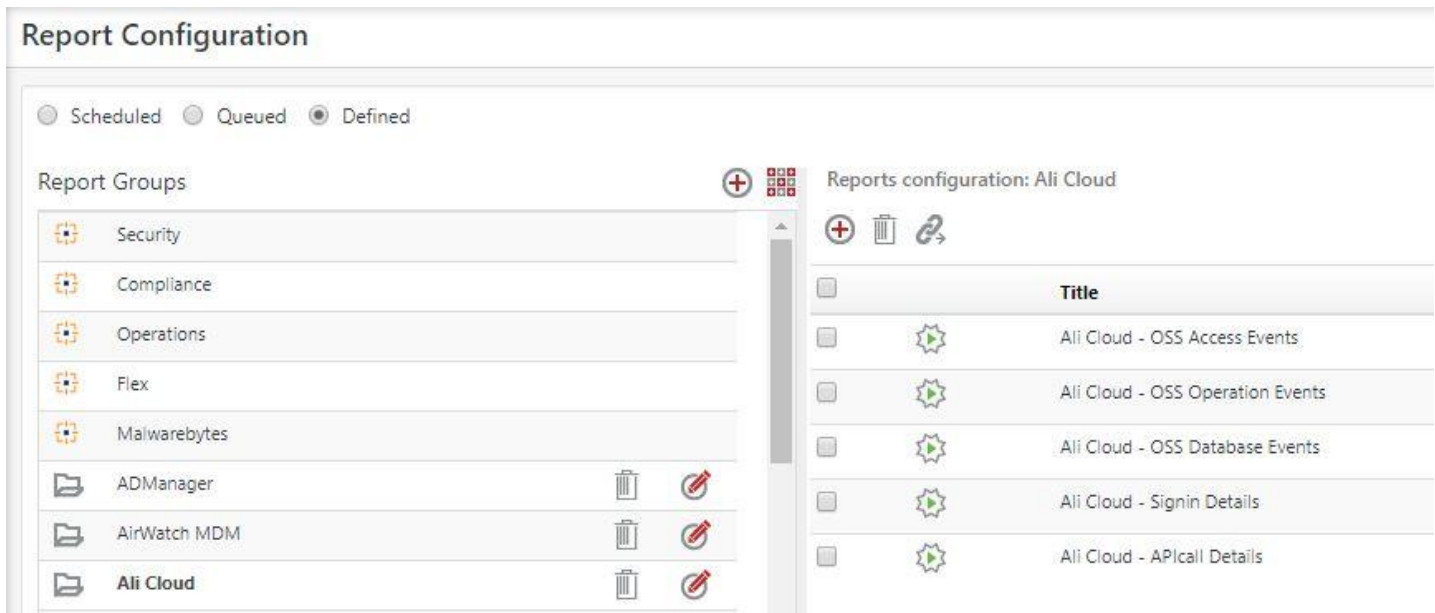



Figure 28

Dashlets

1. Logon to **EventTracker Enterprise**.
2. Click the **Dashboard** menu, and then **My Dashboard**.
3. Then click on **Customize Dashlet** button  and search for **“Office 365”**

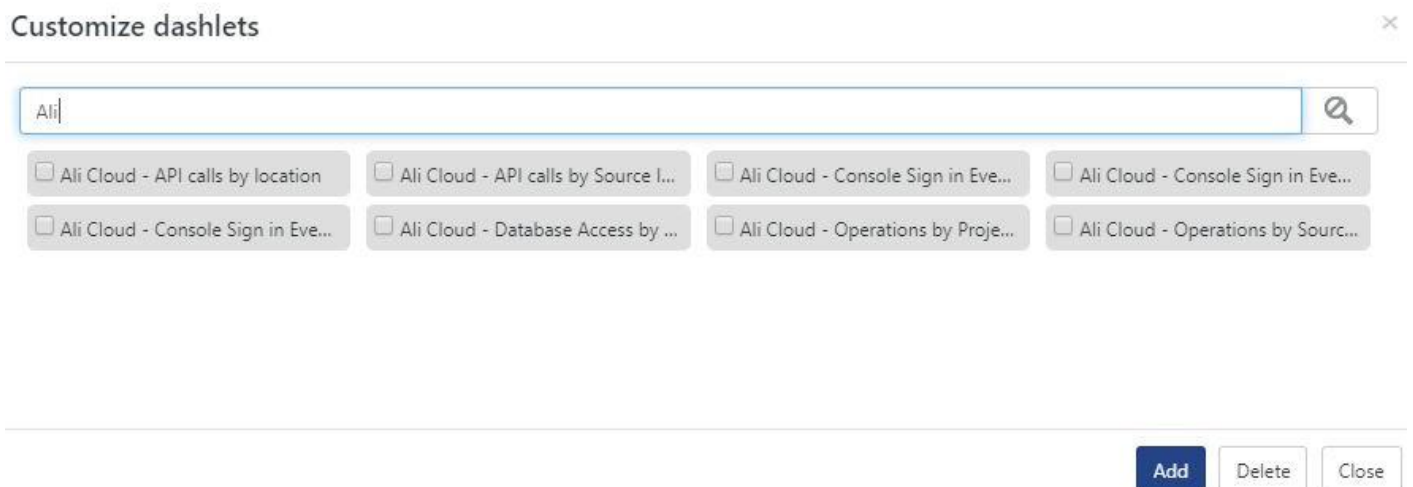


Figure 29